

Funding award  
for Jules' research  
in Namibia



# Staff Hallmark

## Regulars

2-5	News
6-7	In depth
10	Goldsmiths in the news
11	Goldsmiths people



Cover:  
Professor  
Jules Davidoff,  
Department  
of Psychology  
and Director  
of Centre for  
Cognition,  
Computation  
and Culture

**The newsletter for Goldsmiths staff. Staff Hallmark is published six times a year**

### Contact us

E-mail: [hallmark@gold.ac.uk](mailto:hallmark@gold.ac.uk)

Phone: 020 7919 7976

Visit Hallmark online at

[www.goldsmiths.ac.uk/hallmark](http://www.goldsmiths.ac.uk/hallmark)

We welcome your suggestions for articles. Copy deadline for the next edition is **24 July**. Inclusion is at the discretion of the Editor, who reserves the right to edit all material as appropriate.

**Editor** Rebecca Watts

**Sub-Editor** Adam Peers

Hallmark is printed on 9lives Offset, which is manufactured from 100% recycled fibre. Product certification: FSC 100% recycled, NAPM recycled approved.

## Sports day



Teams from 10 Goldsmiths departments took part in a 'sports day' afternoon, held on the Backfield and organised by Goldsmiths Students' Union.

Events included the three-legged race, wheelbarrow racing, softball and an egg and spoon race. Five football games were held before ClubPulse won the football tournament.

## Warden elected to Chair of FSSG

The Warden, Professor Geoffrey Crossick, was asked in April by HEFCE, RCUK and Universities UK to take over as Chair of the Financial Sustainability Strategy Group (FSSG).

The group is charged with taking forward high-level Transparent Approach to Costing (TRAC) developments, and also with making the larger case for

sustainable research and higher education. It aims to meet institutions' needs for management information for decision-making, and to satisfy accountability requirements, and inform public policy and funding decisions.

The Warden succeeds Steve Smith as Chair of FSSG, with Steve moving to take over as President of Universities UK.

### Term dates

Autumn term runs 21 September-11 December.

Enrolment runs 21-25 September, most teaching begins 28 September.

## Honorary Degrees and Fellowships 2009

Here are details of people who will receive Honorary Degrees and Fellowships during September's graduation ceremonies.

Name	Details
Zaha Hadid CBE RA	Influential architectural designer, whose prize-winning designs include the commission for the London 2012 aquatics centre. Zaha has taught at institutions across the world, including Harvard and Yale, and is currently visiting professor at the University of Applied Arts in Vienna.
Tony Hall CBE	Chief Executive of the Royal Opera House, Covent Garden. Formerly Director of News at the BBC; Tony launched BBC Parliament and Radio 5 Live.
Claire Tomalin	Claire is the author of highly acclaimed biographies of Mary Wollstonecraft, Katherine Mansfield and Jane Austen. Her account of Charles Dickens' relationship with the actress Nelly Ternan, 'The Invisible Woman: The Story of Nelly Ternan and Charles Dickens', won the James Tait Black Memorial Prize (for biography), the NCR Book Award for Non-Fiction and the Hawthornden Prize.
Professor Mark Mazower	The Ira B Wallach Professor of History, Columbia University, formerly Professor of History at Birkbeck. Mark specialises in modern Greece, 20th century Europe and international history; his most recent publication is 'Hitler's Empire: Nazi Rule in Occupied Europe'.
Mark Wallinger	Goldsmiths alumnus (MA 1983-85). Mark is an artist whose work includes painting, sculpture, photography, video and installations. His statue 'Ecce Homo' (1999) was the first work to occupy the empty plinth in Trafalgar Square. He has recently been awarded the Ebbsfleet landmark commission ('Angel of the South') and won the Turner Prize in 2007.
Cecil Balmond	Deputy Chairman of Ove Arup & Partners. Structural engineer, teacher and writer, specialising in design for buildings with innovative structures. Collaborations include Staatsgalerie Stuttgart, Kunsthaal Rotterdam, CCTV Tower Beijing and the Serpentine Pavilion 2006.
Professor Shirley Brice Heath	Professor at Brown and Stanford Universities, Shirley is a linguistic anthropologist whose recent research has been with young people in under-resourced environments. In England she has carried out extensive research on the effects of creative partnerships.
Dame Janet Ritterman DBE	Janet is the former Director of the Royal College of Music; a member of Goldsmiths' Council 2002-07; and was Senior Lecturer in the Department of Music 1980-87.
Professor Lord Wedderburn of Charlton QC FBA	Leading Labour and European lawyer who continues to shape the debate and scope of UK and international labour law. Lord Wedderburn was born in Deptford and educated at Haberdashers' Aske's Hatcham.

Honorary Degrees and Fellowships are given to people whose achievements reflect values important to the Goldsmiths community. Honorands include alumni, former staff, internationally respected academics and public figures.

Any member of staff can nominate someone to receive an Honorary Degree or Fellowship, just complete the online form at [www.gold.ac.uk/honorary-appointments](http://www.gold.ac.uk/honorary-appointments).

Nominations are considered by the Honorary Degrees and Fellowships Committees at meetings in November and January each year.

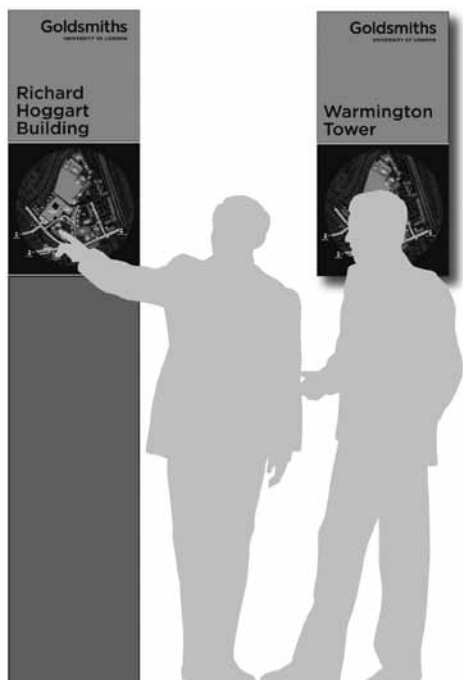
## Occupational health

An occupational health service has been operational at Goldsmiths since April. The service is provided by the Institute of Occupational Medicine. As part of the service, Bruce Ormiston (right), a qualified occupational health nurse, is on campus every Monday taking appointments.

Occupational health is the promotion and maintenance of physical and mental wellbeing of any member of staff. Bunmi Odulaja, HR Business Partner, explains: "When staff are ill or have health problems affecting their work, we will be able to get professional advice to help us decide how best to manage the situation together."

Referrals to the service go through HR, so your first point of call for information and a referral is your HR Business Partner (you can find out who yours is by visiting [www.goldsmiths.ac.uk/hr](http://www.goldsmiths.ac.uk/hr)). The service is confidential and nothing will be discussed with your line manager without your consent. More information about occupational health and the services offered can be found on the HR website [www.goldsmiths.ac.uk/hr](http://www.goldsmiths.ac.uk/hr).

Bruce Ormiston, occupational health nurse, is on campus every Monday



## Contractor for signage project appointed

The contractor for the external wayfinding (signs that help direct people across campus) and signage project has been appointed. The contractor will be working on campus to install new external signs to improve wayfinding in and around the campus for students, staff and visitors.

Patsy Carter, Head of Administration, Estates and Facilities, says the contractor appointed has substantial experience of working with other higher education institutions on

delivering a broad range of signage projects both in size and diversity.

Patsy expects the contractor to begin installing signs on campus between August and September this year. It is intended that the majority of signs will have been installed before the start of the next academic year 2009-10.

Phase two of the signage project will focus on the installation of signage inside campus buildings. This should be rolled out during the spring and summer terms 2009-10.

# Features

---

## What do you want in the new Warden?

Professor Geoffrey Crossick will be stepping down from his post as Warden of Goldsmiths at the end of July 2010. The process of appointing his successor for what will be a tough but rewarding challenge is underway.

Staff and students were invited to comment on the qualities they think the institution should be looking for in the new Warden. People were asked to give their thoughts specifically on the personal qualities, experience and strengths they felt the new Warden has to have. So, what are people thinking?



"I'd like the next Warden to carry on Geoff's good tradition of engaging with staff of all levels, and to keep Goldsmiths on the map. Whoever gets the job, they'll need a good sense of humour!"

Bronwen Bernard  
Head of Health and Safety



"Recently, a University of Oxford professor expressed the view that Wardens no longer speak for universities to government, but instead speak for government to universities. With that in mind, it'd benefit students to have a Warden open to embracing the student voice, and one willing to challenge government proposals."

Jesse Fajemisin  
Students' Union President

"I think we need somebody who understands that higher education is in the middle of a transformation which is to some extent driven by, and certainly turbo-charged by, technology. We also need somebody who values collegiality, who is committed to minimising the impact of factionalisation on campus.

"And we need somebody who puts themselves about a bit - one thing I have very much valued about our current Warden is how communicative he has been."

Mira Vogel  
Learning Technologist, Goldsmiths Learning Enhancement Unit



"I think we need someone who has got the strength and vision to guide the institution to what it wants and needs to be in the next 10 years. Someone who can adapt and is dynamic and sees the intricacies in Goldsmiths."

Juliet Sprake  
Lecturer in Design and  
Technology Education, Design

# Greening behind the scenes

We keep hearing about 'greening Goldsmiths' and the institution's work with the Carbon Trust, but what's really happening? Here's a round up of some of the behind-the-scenes improvements that have been taking place on campus.

### Money-saving jackets

More than 200 tailor-made valve insulation jackets have been ordered. The jackets will be used to insulate boilers in the main buildings on campus, as well as Raymont Hall and Surrey House. Un-insulated valves act like radiators, leaking heat, which wastes money through excess fuel bills. With each un-insulated valve equating to leaving a traditional 100 watt light bulb running, the cost savings are significant. Jackets will be fitted to valves on campus before the start of autumn term in September 2009.

### Lighting control system in Ben Pimlott Building

New software and a computer system has been ordered that will enable us to control lighting in the Ben Pimlott Building. The system should be installed for the start of the autumn term, allowing the Building's lights to be dimmed - or switched off - at night, meaning Goldsmiths can join in the annual 'lights off London' campaign.

### Energy efficient lighting

Almost 2,000 fluorescent light fittings in the Richard Hoggart Building have been converted to more energy efficient high frequency fittings. Alongside this more than 1,100 tubes have been replaced with 'greener' T5 tubes, reducing the electrical load by more than 30%.

### Display energy certificates

Display energy certificates (DECs) show the energy usage of a building. Ratings are based on the energy consumption of the building as recorded by gas, electricity and other meters.

DECs are required for large buildings occupied by a public authority or institution providing a public service to a large number of people. A rating of 100 is considered typical, whereas ratings below 75 are given the green light for energy efficiency.

Goldsmiths buildings qualifying for a DEC and their related ratings are:

Ben Pimlott Building (92)  
Deptford Town Hall Building (29)  
Laurie Grove Baths (76)  
Loring Sports Ground (38)  
Richard Hoggart Building (142)

Halls of residence have good ratings with most coming in at an average of 50, and Dean Hall rating a very low 39.

Running alongside the DECs is an advisory report for each building. Although not compulsory to act on the energy improvements outlined in the report, taking action on the recommendations is likely to improve the energy efficiency of buildings, reduce fuel bills, cut carbon emissions and improve public perception of the buildings.

### Proposed recycling scheme for Goldsmiths

White paper and toner cartridges are the only waste material currently recycled at Goldsmiths. Mary Bright, Head of RCCS, has put a proposal together for a new recycling scheme.

Each workstation or desk would be provided with a reusable recycling bag in place of a waste bin. Each work area would have a collection point equipped with three plastic-lined bins or sack holders:

- green for white paper
- clear for mixed recycling
- black for non recyclables

Everyone would be responsible for emptying their own reusable recycling bag into the central bin in their area. Cleaners would no longer empty individual office bins and would only remove the large bags from the centralised collection points.

The proposal was taken to the Environment and Sustainability Sub-Committee in June.

## Awards



### College gets recognition for carbon management

Pictured above, Environmental Advisor, Erica Drew and Head of Administration for Estates and Facilities, Patsy Carter, received a certificate from David Lammy MP, Minister for Higher Education and Intellectual Property. The certificate recognises Goldsmiths' effort, in conjunction with the Carbon Trust, in carbon management, emission reduction and the mitigation of climate change.

### Students' Union bags silver environment award

Goldsmiths Students' Union has been awarded the 'silver' status at this year's Sound Impact Awards. The Awards

reward students' unions for environmental best-practice over the previous 12 months.

The Students' Union has been recognised for the past three years, and this year it improved by moving from the 'bronze' status up to the higher-ranking 'silver' status.

The Sound Impact Awards use a list of criteria, each relating to a different action that help unions reduce their negative impact on the environment, to base accreditation according to the highest scoring 'gold' award, followed by 'silver' and then 'bronze' standard.



Jess Tratt, outgoing Students' Union President, and Wil Fincher, Venue and Commercial Services Manager, collect their award

## Cycle survey results

Just under 200 colleagues completed the cycling to work survey back in March. The survey gauged staff perceptions and attitudes towards cycling to work, ascertaining the number of staff currently cycling to work and the rationale behind those who chose not to.

### To cycle or not to cycle?

The results showed 22% of respondents cycled into work. Less than 18% travelled by car, with the train being the most popular form of transport. The biggest deterrent to cycling to work was road danger, with staff also expressing concern about getting dirty and sweaty and the lack of changing facilities on campus.

### Could staff be encouraged to cycle to work?

Over half of people that didn't currently cycle to work said they could be encouraged to do so, with improved showers, assistance in purchasing a bike and more secure bicycle parking and storage lockers being installed on campus.

### What happens next?

A summary of the results was submitted to Admin Business Committee (or ABC for short). Committee members asked HR, Finance, and Estates and Facilities to review the results and consider the impact of Goldsmiths supporting initiatives that could encourage more staff to cycle to work.

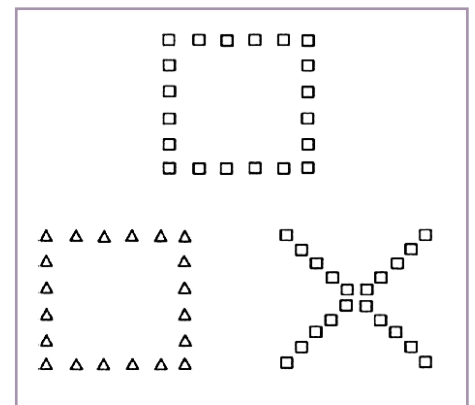


## Namibian research gets funding award

Professor Jules Davidoff from the Department of Psychology and Director of the Centre for Cognition, Computation, and Culture, has received an award of more than £400,000 from the



Economic and Social Research Council for three years to conduct research with remote Namibian animal herders called the Himba. The award allows his group to continue their work of the last eight years in Namibia. The research will examine the Himba's unique perceptual abilities, which act in reverse to those usually observed in Westerners. Using the diagram on the right as an example, when asked which of the bottom two figures is more like the top, most Westerners choose the one on the left showing a typical 'global bias'. Explaining this, Jules says that when looking at scenes, we see 'the forest' before the trees. However, the Himba choose the one on the right showing a 'local bias', and this may explain why they are so very exact at size judgements in cluttered



environments. Jules considers this very unusual and challenges the view that such global bias is an innate human characteristic. "I believe the similarities in attention between the Himba and atypically developing individuals (eg, autistic children) will open up new avenues for research away from current biologically deterministic views."

# Starters and leavers

Thank you to Human Resources  
for supplying this information.

## Welcome to Goldsmiths ...

Miss Yu-Chiao Chung, Research Assistant,  
Educational Studies, 01/04/09

Ms Anja Soetbeer, Assistant Architect,  
Estates and Facilities, 11/05/09

Ms Marie Fallon, Research Grants  
Officer, Finance, 27/04/09



Miss Sally Townsend,  
Director of Finance,  
Finance, 25/05/09

Miss Tahini Nadim, Library Assistant, Library, 11/05/09

Mr Jack Evans, Technical Advisor, Media  
and Communications, 11/05/09

Mr Matthew Walter, Digital Image Technician,  
Media and Communications, 15/04/09

Miss Natalie Marshall, Open Book Project  
Assistant, Registry, 04/05/09

Mrs Deborah Okogba, Departmental  
Manager, Sociology, 11/05/09

Dr Shamser Sinha, Research Assistant,  
Sociology, 27/04/09

## Wishing you well for the future ...

Miss Gemma Carter, Careers Information  
Assistant, Careers, 17/04/09

Dr Olga Goryunova, Lecturer, Centre  
for Cultural Studies, 01/04/09

Mrs Lucinda Ayles, HR Policy Specialist,  
Human Resources, 22/05/09

Miss Jemma Wiegold, Recruitment  
Administrator, Human Resources, 08/05/09

Mr Tony Steffert, Research Fellow,  
Psychology, 30/04/09

Dr Noortje Marres, Marie Curie Intra-  
European Fellow, Sociology, 30/04/09

Mr Joseph Leach, Researcher, Psychology, 15/04/09

## Warden responds to David Lammy MP

The Warden, Professor Geoffrey Crossick, was invited to give the speech in response to Higher Education and Intellectual Property Minister, David Lammy MP at his talk 'The Value of Higher Education' at the Royal Society for the encouragement of Arts, Manufactures and Commerce in June.

In his talk, reported by the Times Higher Education, David argued that the arts and humanities were no less important than science and technology, adding that he wanted to move beyond the "sterility" of a "two cultures" debate. Professor Crossick responded at

the talk, thanking and applauding the minister for his "powerful and thoughtful affirmation of a vision for universities - a vision for education, for research and for the breadth of the contribution these made to society."

He also welcomed the strong support given in the speech to the arts and humanities, and offered to work with government to make that powerful vision a reality.

A video of the Warden's response is available from the RSA website, [www.thersa.org](http://www.thersa.org).



# Goldsmiths in the news

---

## Global coverage for research into music affecting moods

A research project led by Joydeep Bhattacharya, Reader in Psychology, received a huge amount of media attention both in the UK and across the globe.

He was interviewed by various BBC programmes, national newspapers such as The Guardian and The Daily Mail, and in the international press like Le Monde and the Phillipine Times.

The research showed it is possible to influence emotional evaluation of visual stimuli by listening to musical excerpts before the evaluation. Volunteers listened to a musical excerpt lasting 15 seconds and then judged the emotional content of a face. Joydeep found that the prior listening to happy music significantly enhanced the perceived happiness of a face and likewise listening to sad music significantly enhanced the perceived sadness of a face.

By recording brain waves, the study showed that prior listening to music could induce changes in the brain activation patterns which are usually not directly under our conscious control. "What surprises us," Joydeep said, "is that even as short as 15 seconds of music can cause this effect. More research is needed to find how long the effect lasts or if, and how, other factors such as musical preference and personality, control this effect."

## Blur's return causes a stir

As the countdown to Blur's return to Goldsmiths hotted up, the press and media coverage surrounding their June gig in the Students' Union exploded. From tabloid papers like The Sun and The Mirror, to local paper the South London Press and specialist music press like the NME, the return of the College's famous alumni caught the media's imagination. The gig was a sell-out and Blur donated 100 tickets to be auctioned off to raise money for the Teenage Cancer Trust.



One half of Blur, photographed in the Students' Union by Art student, Yuko Kashiwagi

---

## Professor of Public Art debates on Radio 4

Professor of Public Art, Andrew Shoben, was interviewed on Radio 4's flagship Today Programme to discuss The Art Fund's debate over whether the public can be 'trusted' to choose public art. On the programme he argued: "If you're serious about making public art, it's very difficult to defend the decision not to involve the people who will end up living with and working around the art that you create."

## Students play guinea pigs for the BBC

A selection of students were used as a test panel on the BBC's One Show in a piece about 'Earworms' - which are songs that get stuck inside your head. They listened to a new piece of music created by experts using a formula in order to try and make it as catchy as possible. The students were then interviewed a day after they heard the song and were asked if it had stuck in their heads; the majority of them agreed it had, and also agreed it was a terrible track.

---

## Roger Hiorns continues Goldsmiths' Turner Prize trend

Artist and Goldsmiths alumnus Roger Hiorns was featured in national broadsheets such as The Guardian, as well as specialist art press, when he was announced as one of the 2009 Turner Prize nominees.

He transformed a condemned south London flat into a cavern filled with eerie blue crystals for his piece entitled Seizure, and will be hoping to become the sixth Goldsmiths graduate to bag the prestigious award. He poured thousands of litres of copper sulphate into the flat and then waited for it to crystallise. The work saw many hundreds of visitors queuing up to don wellies and gloves and explore it.

The winner of the Turner Prize will be announced at Tate Britain on Monday 7 December 2009.

## The Noughtie Girl's Guide to Feminism

Ellie Levenson, part-time Media and Communications Lecturer and freelance journalist, has had her first book published. 'The Noughtie Girl's Guide to Feminism' is a look at how feminism affects our everyday lives. Ellie says: "I wrote this partly because friends of mine were saying there weren't enough books about feminism that are written with our generation in mind and the feminism of our mums' generation is quite removed from our lives. I'm hoping all the women (and men) who say 'I'm not a feminist but...' will read this book and realise that they are in fact feminists."

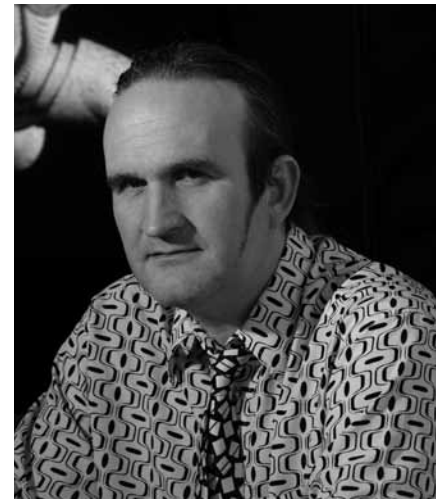


Ellie Levenson  
Photo by Clare Muller

## Evolution of Form

Professor William Latham from the Department of Computing had his work 'Evolution of Form' shown at the Tate Modern in March.

William's film featured as part of the Animation Breakdown Screening: Computer Baroque Programme, a selection of pieces illustrative of the history of artists' digital moving image. William's work, originally produced in 1990, is seen as a defining work in this area. You can view a clip of his film in the media section at [www.williamlatham1.com](http://www.williamlatham1.com).



Professor William Latham,  
Department of Computing

## Nyx a nocturnal

'Nyx a nocturnal' is a new alternative journal produced by current and recent members of the Centre for Cultural Studies. The first issue is available to download from their website at [www.nyxnocturnal.com](http://www.nyxnocturnal.com), or you can buy a hard copy in the G-Shop in Richard Hoggart Building.

### Design exhibit in Milan

During April, the Department of Design exhibited at this year's Milan Furniture Fair 2009, as part of Salone Satellite, a showcase for young designers. Goldsmiths was one of only two UK universities to have a presence at the event. Design students documented their time at the event via a blog and Twitter account. Take a look at their website, [www.goldsmiths09.co.uk](http://www.goldsmiths09.co.uk).

## Tom, Daniel and the Spider

Tom McMullan from the Department of English and Comparative Literature has written a play called Daniel and the Spider which was shown at the Southwark Playhouse in June. The play will also be performed at the Edinburgh Fringe Festival in August. Go to [www.edfringe.com](http://www.edfringe.com) for more information.

## Student film screened at festival

'The Absence', a film by Anthropology doctoral student Ricardo Greene, was selected to participate in the programme of the 11th RAI film festival. The Festival took place in the first week of July at the Rose Bowl Building at Leeds Metropolitan University.

## New Academic Building

A new building on campus presents opportunities to engage potential donors for Goldsmiths. For this reason, it's been decided to change the name from 'Backfield' to 'New Academic' Building. David Mungall, Director of Development, says from a development perspective, 'Backfield Building' wasn't ideal. "'Backfield' is not a particularly pleasing name, which gives us

a little bit more of a hill to climb when starting any conversation with a potential donor.

"The alternative suggestion of 'New Academic Building' definitely doesn't have the same feel as 'Backfield', which is good for conversations with donors. It's also not a name which will stick, meaning we

can end up with something more fitting in the future."

### Bat and bird boxes

The New Academic Building will not only house the latest technology and equipment, but also boast environmentally friendly features, such as bat and bird boxes and a 'BREEAM' rating.

BREEAM is the environmental assessment method for buildings around the world and Goldsmiths is aiming for the Building to achieve a 'very good' rating. As well as the bat and bird boxes, green features will include heating sourced from a Biomass boiler and extensive use of natural ventilation. Recycled materials will be used in the internal floor finishes and a high proportion of the construction materials will be able to be recycled.

There's more information at [www.goldsmiths.ac.uk/newacademicbuilding](http://www.goldsmiths.ac.uk/newacademicbuilding).



## Obituaries

### Lord Slynn

Lord Slynn of Hadley died aged 79 in April. He was the President of Goldsmiths Students' Union from 1950-51. After leaving Goldsmiths, where he obtained a BA General degree and Postgraduate Certificate in Education, he went on to forge a career in law, eventually becoming a Lord Justice of Appeal in 1988.

He was knighted in 1976 and created a life peer in 1992. He was appointed GBE (or 'Knight Grand Cross', the most senior grade of seven British orders of chivalry) in 2009 and had six honorary fellowships - including one from Goldsmiths awarded in 1993 - and 15 honorary doctorates from universities around the world.

### Olivia Harris

Olivia Harris, a former colleague from the Department of Anthropology, died in April after a brief illness. In an email to all staff, Frances Pine, Head of Anthropology, wrote: "Olivia worked at Goldsmiths for 25 years where she helped establish the Department of Anthropology. She recently served a term as chair of the Department of Anthropology at the London School of Economics.

"Olivia was an inspired and inspiring teacher as well as an exceptionally gifted researcher. Her personal warmth, intellectual powers, and dedication to the vocation of scholarship persuaded many to follow her path. She will be sorely missed as a teacher, friend

and colleague as well as a brave and original social scientist."

### Darren Harvey

Darren Harvey worked as a Porter between September 1997 and September 2005. In June he was involved in an accident and died in hospital shortly after.

Janet Sellar, College Superintendent, says Darren was popular both with his immediate work colleagues and many staff members across College. He will be missed by his friends and colleagues. His funeral took place on 23 June.