



Postgraduate Design

Goldsmiths
UNIVERSITY OF LONDON

The Department of Design:

—Radical, creative and intellectually challenging programmes taught by internationally recognised design academics

—Renowned for research in sustainability, materials, critical practice, design & technology education, interaction design, user experience, design thinking and futures



About Goldsmiths

—107 years as part of the University of London
—Students from 110 countries

—15 academic departments
—5,805 undergraduates
—3,422 postgraduates
—1,519 staff

Design at Goldsmiths – dynamic and forward thinking

Design flourishes in Goldsmiths' intellectual and interdisciplinary climate. This affords us the unique opportunity to draw on a wealth of critical, theoretical and creative perspectives, which in turn shape the distinct – and often radical – design practices, educational programmes and research that we pursue.

The department's teaching is based on excellence in staff research and practice. All members of academic staff engage in research. This enables us to remain at the cutting edge of theory and practice in design and in design education, keeping our educational programmes relevant and dynamic. Our tutors are enthusiastic, professional and friendly, and our programmes are creatively and intellectually challenging.

The department is renowned for important research in sustainability, design and technology education, interaction design, critical practice, user experience, materials, design thinking and futures. In the last Research Assessment Exercise (2008), 74% of our work was in the 'internationally recognised', 'internationally excellent' or 'world leading' categories. The reputation of the department is further enhanced through the exemplary work of our design practitioners in producing commercial and exhibition work that is acclaimed around the world.

Facilities

The department has seminar spaces with multimedia facilities, dedicated design studios and teaching rooms. There is an extensive workshop with wood, metal and plastic specialities, and a textile studio.

We have a broad range of computing facilities to reflect the broad range of specialities in the department: Macs for communication graphics, video, web-authoring and multimedia applications; a computer studio adjacent to the workshops, with PCs for computer-aided design; and computer-aided manufacturing facilities in both the workshop and the textile studio. The workshop facilities are maintained to the highest standards by knowledgeable and helpful staff.

Skills for the future

An education in design enables you to develop the strategic, innovative, intellectual, personal and interpersonal skills that are increasingly sought after by many employers. Our postgraduates leave Goldsmiths with strong conceptual and critical design skills alongside a broad range of transferable skills in project management, creative facilitation, research methods, and also a working understanding of many communication, material and production technologies.

Careers/employability

We produce graduates of consistently high calibre, including many who have become leaders in the creative industries of a number of countries. Our students have won numerous awards (including UK Young Designer of the Year and Eco-Designer of the Year) and their shows have attracted attention in the media and achieved great acclaim in the design community. A number of our graduates are now working in top London design consultancies (Fitch, Thomas Heatherwick Studios, Imagination, Pentagram) and major British companies (John Lewis Partnership, Eden Project, Harvey Nichols).

The programmes

We offer six Masters, as well as the design-related Secondary PGCE, and a PhD and MRes in Design

MA in Design and Environment

1 year full-time or 2 years part-time

This MA addresses the intersection of design and environmental issues from the perspectives of both theory and practice-based study. In distinction to other programmes in the area, it undertakes an intensive inquiry into environmental discourses and practices, and maintains that such an inquiry enables creative projects that would not be possible in other contexts. In this sense, the MA establishes a critical-creative setting in which you can challenge existing theory and practice, and explore ways to expand your own research and practice. Assessment is through peer review, tutor appraisal, self-evaluation and student-tutor consultation. In discussions through seminars and tutorials, you and your tutor will be able to assess learning through process to final outcome. Depending on your focus, the outcomes may consist of essays, design work, portfolios, and formal presentations.

MA in Design – Critical Practice

1 year full-time or 2 years part-time

This MA transcends the traditional fields within design, offering you the opportunity to develop your specific practice in relation to multiple disciplines. It emphasises the development of a critical practice through a two-fold consideration of context – examining theoretical or speculative issues alongside those involving practical or material concerns. By engaging with the way discourses infuse design practice, and exploring how practice itself may contribute to evolving design discourse, you will develop knowledge and understanding through active enquiry and reflective process. Assessment is through peer review, tutor appraisal, self-evaluation and student-tutor



“My MA was important to me as I wanted to further my studies. However, along the way I have discovered some amazing people; and that the mind once opened is the most wonderful and beautiful tool.”

Alix McTaminey, who is now studying part-time for a PhD at Goldsmiths after gaining her MA in Design Education

consultation, and also via assignments, essays, design work, and a major project.

MA in Design Education

1 year full-time or 3 years part-time

We consider how learning might reinvigorate designing and how designing might reinvigorate learning. The programme establishes a critical-creative setting in which you can challenge existing practice and explore ways to develop your own. Through a range of core and option courses, you will develop understandings and expertise that you can utilise in your final project. For the project you will engage in significant research, in a context of your own choosing. It can be undertaken as either practice-based research supported by theory, or theory-based research supported by practice. The Masters

is assessed by essays, presentation forums, critical and reflective statements (usually accompanying a portfolio of work), and an individual research project (a dissertation or portfolio, realised outcome and report).

MA in Design Futures

1 year full-time or 2 years part-time

The MA in Design Futures aims to broaden and deepen your understanding of design practice in its full context, introducing deep ethical and ecological perspectives into the design agenda. You will be encouraged to challenge the boundaries and purposes of design as both a professional discipline and creative practice. In this sense the programme offers a ‘metadesign’ approach that helps you to question design, reconcile your creative aspirations with your responsibilities as a designer, and situate your design thinking and practice within a multicultural and interdisciplinary discourse. You will develop a theoretical framework and acquire a working design knowledge to develop and articulate subtle ideas to relevant stakeholders. Assessment is by four 5,000-word design proposals and a 15,000-word dissertation on a design-related issue of your choice.

MA/PGDip/PGCert in Innovation and Practice

1 year full-time or 2-3 years part-time

This programme is a collaboration between you, your place of work, and Goldsmiths. It enables you to bring an academic perspective to an ‘innovation project’ identified in the context of your work place – a project that is beneficial to your ‘actual work’. You will have the opportunity to work with experts from a wide range of subject areas and disciplines (designers, social scientists, philosophers, creative business experts, psychologists, engineers and material experts) whose

differing knowledge and critical focus will help you develop your own innovation project.

MA in Creative and Cultural Entrepreneurship

1 year full-time or 2 years part-time

The Design Pathway of this MA allows you to develop the business/entrepreneurial skills and attributes to commercialise on your creative and cultural practices and/or knowledge. You will be able to build on a historical and theoretical understanding of cultural and creative industries and the development of a cultural economy to create your own creative initiatives, which might be research-based, policy-based, practice-based, or a combination of any or all of these.



“The MA in Design Futures has a unique structure and philosophy that gives students a safe space in which to dream and turn the impossible into the possible. The research I did for my Masters was the groundwork for setting up my own practice, and the ideas we explored continue to inspire and influence me.”

Emily Wilkinson, who graduated in 2009, now works as a Visual Facilitator and Artist at mindfulmaps.com

Postgraduate facilities

As a postgraduate student at Goldsmiths you'll benefit from a strong and supportive infrastructure providing facilities and training, and encouraging contact across departments. Research students can also use our Graduate School, which includes an open-access computer room, a kitchen, quiet room, lockers, printing facilities and free refreshments. The School also hosts a series of seminars and other activities during the year that are open to all postgraduate research students and staff in the College.



Watch our graduate profile film at
www.youtube.com/GoldsmithsLondon





PGCE (Secondary): Design & Technology

1 year full-time or 2-3 years part-time

This programme gives you an excellent professional grounding for teaching in a state secondary school. We welcome applications from students from a diverse range of disciplines, including design, architecture and fashion. The curriculum includes working with resistant materials (product design), systems and control (electronics, CAD/CAM), textiles, and food technology. What unifies these is the subject of Design, and the development of designing competence. Our aim is to develop teachers whose vision, imagination and professionalism takes them beyond the realities and constraints of current classrooms and curricula, continually evolving new and better models of practice.

MRes in Design

1 year full-time or 2 years part-time

This programme enables you to develop and undertake original research in or into design practices and related fields at Masters level. This can be preparation for more evolved research, and may allow for fast tracking onto a PhD programme. You are able to bring your own research project or interests to develop through your study. Your research may be focused on past and/or contemporary forms of design, design practice, design ideologies, design research; and it may engage with the contexts in which design is produced and consumed, and with wider contextual fields. The submission for

examination can be focused in writing or in practice. Three strands of study in the MRes will: introduce you to the theories/discourses inherent in design practice; encourage you to review and explore the methods and processes used to research and produce ideas for and about design; and encourage you to locate topics and themes for research in particular areas of interest. A major research project will prepare you for further research in industry or professional practice, or at MPhil/PhD level.

MPhil & PhD in Design

3-4 years full-time or 4-6 years part-time

We welcome enquiries from those who would like to carry out research in any aspect of design or in technology in education.

Current studies include:

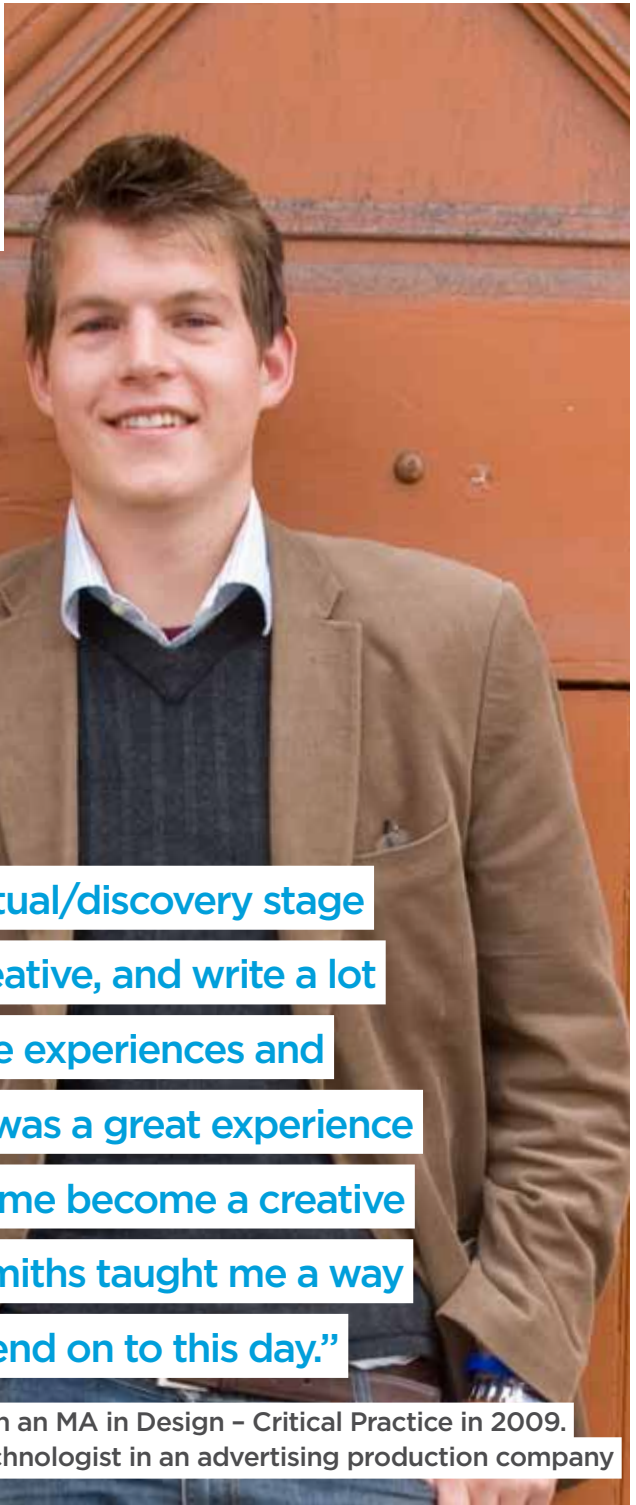
- Eco-design and the environmental impact of products
- International trends in Design & Technology curriculum and assessment
- Story-making in designing and learning: a partnership between children and designers.
- Reflexive drawing and the connection between representation and creativity
- Designing economic cultures: investigating the relation between socio-economic precariousness and collaborative design practices

Contact us to find out more about all our postgraduate programmes, including information about funding and bursaries.

Contact us

Department of Design

Goldsmiths, University of London
New Cross, London SE14 6NW
tel +44 (0)20 7919 7777
design@gold.ac.uk
www.gold.ac.uk/design



“I work in the conceptual/discovery stage of projects as lead creative, and write a lot of proposals for online experiences and installations. The MA was a great experience for me, which helped me become a creative team member. Goldsmiths taught me a way of working that I depend on to this day.”

Stephan Bischof graduated with an MA in Design - Critical Practice in 2009. He now works as a Creative Technologist in an advertising production company