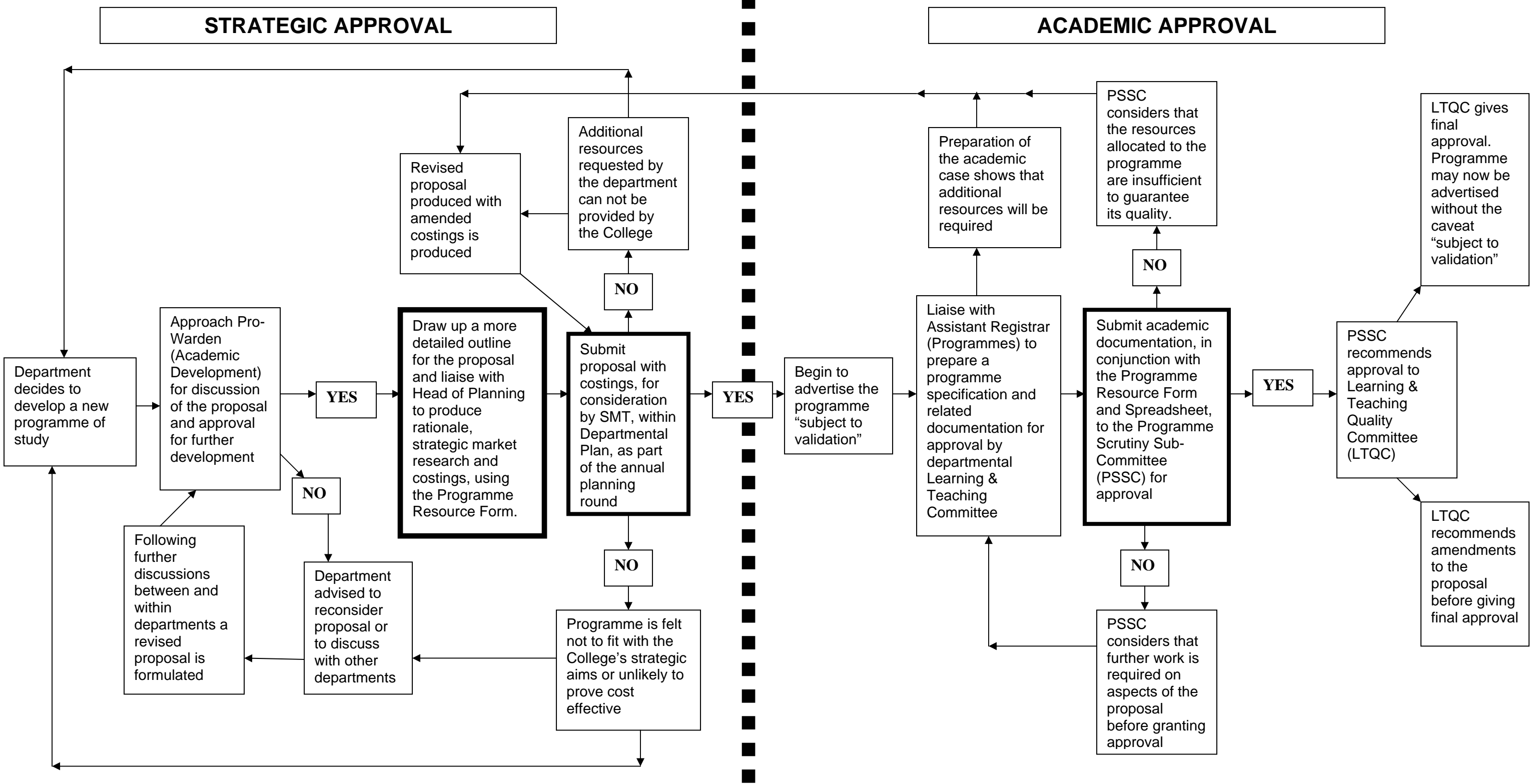


PROGRAMME APPROVAL PROCESS



TIMELINE

	<u>Initial Proposal</u>		<u>Plan</u>		<u>SMT</u>		<u>PSSC</u>		<u>Live</u>
Assuming the programme is submitted in the planning round one full academic year before start.	Autumn 2009	→	Jan 2010	→	Mar 2010	→	either April 2010 or Nov 2010	→	Sept 2011,
If additional resources are required over original costing	N/A		Jan 2011	→	Mar 2011	→			Sept 2011
Assuming the programme is submitted in the planning round Of the same year as the start date (accelerated process)	Autumn 2009	→	Jan 2010	→	Mar 2010	→	Apr 2010	→	Sept 2010