

# TAKE YOUR PLACE



## ***ACCOMMODATION GUIDE 2018 ENTRY***



## WELCOME

Studying in an exciting city like London is a fantastic experience. It's even better when you know you're living somewhere safe, comfortable and affordable.

Goldsmiths offers a range of options - whether you prefer the supported environment of halls of residence on or near campus, or more independent living that lets you mix with a wider London student population. Our dedicated residence life team means that whether you're living in halls or at home, everyone can get involved in our lively and friendly campus community.

This guide will give you an idea about the accommodation we currently offer, and the rent costs for 2018 entry.

### Dates for your diary

<b>Applications for halls of residence open</b>	24 April 2018 at 10am
<b>Applications for halls of residence deadline for new students</b>	26 June 2018 at 4pm
<b>Most accommodation offers are made</b>	After 16 August 2018

# HALLS OF RESIDENCE

“  
*It threw me into a hive of student activity as soon as I arrived in London, and has helped me develop the necessary social skills for thriving at university.*”

We have around 1,500 rooms in our halls of residence. This represents a high proportion of places in comparison to students, and we've committed to increasing the number of places we have over the past few years.

## Types of halls

Many halls are located in New Cross, while others are a short commute away and allow you to live in a different part of London. Accommodation is self-catered, and is generally made up of single occupancy bedrooms within shared self-contained flats, where you have access to a shared kitchen and either a private shower and toilet or a shared bathroom. Some studio flats and accommodation for couples is also available.

If you're an undergraduate you'll be housed with other undergraduate students, and if you're a postgraduate you'll be housed with fellow postgraduates.

Internet access is available in all halls of residence, and wheelchair accessible/adapted rooms are available. If you want to share with people of the same gender please let us know on your application and we will try to meet requests.

The halls of residence are managed by Goldsmiths or in partnership with a private provider. Our Goldsmiths-managed halls are signed up to the Universities UK Student Accommodation Code, and the halls managed by private providers are signed up to the ANUK/Unipol National Code of Standards for Larger Developments for Student Accommodation. Find out more about the national codes of standards at [gold.ac.uk/accommodation/halls/life-in-halls](https://gold.ac.uk/accommodation/halls/life-in-halls)

## Rent

For 2018-19 the weekly rent in halls of residence ranges from:

- £118-£251 (for rooms with shared and en suite facilities)
- £267-£318 (for studio rooms with private facilities)

Rent includes all utility bills (ie electricity, water and gas), basic possessions insurance and internet access.

Our halls are priced very competitively in comparison to other local London universities. You can find out more about each of the halls on pages 6-15.

## Security and wellbeing

Your safety and wellbeing is very important to us, and we have a range of trained staff who are here to support you. All residents have access to security staff and office teams who are available 24 hours a day, seven days a week to provide a safe and secure living environment. You can find out more about our residence life team, who provide holistic support for our students, on page 20.

## Watch our accommodation film

Find out more about our accommodation at [youtube.com/GoldsmithsLondon](https://youtube.com/GoldsmithsLondon)





# HALLS OF RESIDENCE

## Batavia Mews

This residence is made up of 13 self-contained flats housed above a parade of shops.

Location	New Cross, SE14 6EA
Distance from campus	2 minutes' walk
Room type	Standard; medium
Bathroom facilities	Shared
Kitchen facilities	Shared
Number of people per flat/floor	7 to 20
Number of people in the hall of residence	114
Internet	Yes – wifi
Bicycle rack	Yes
Launderette	Access to the launderette at Loring Hall
Social space	No
Garden	No
Undergraduates	Yes
Postgraduates	Yes
Managed by	Goldsmiths
<b>Weekly rent (2018-19)</b>	<b>£118-£119</b>



# HALLS OF RESIDENCE

## Chapter Lewisham\*

Chapter Lewisham was opened in September 2016. It's located in Zone 2 with excellent travel links to many London landmarks. It houses around 600 students, of which 96 are Goldsmiths students.

Location	Lewisham, SE13 7SD
Distance from campus	25 minutes' walk
Room type	Standard; en suite; studio
Bathroom facilities	Shared; en suite
Kitchen facilities	Shared (private if you're in a studio)
Number of people per flat/floor	3 to 5
Number of people in the hall of residence	Around 600
Internet	Yes – wifi
Bicycle rack	Yes
Launderette	On site
Social space	Yes (and there is also a gym)
Garden	Terrace
Undergraduates	Yes
Postgraduates	Yes
Managed by	Chapter
<b>Weekly rent (2018-19)</b>	<b>£195-£242*</b> <b>Studio: £282-£287*</b>



*\*At the time of printing the availability and costs of this hall were still to be confirmed. It's likely that we will have rooms available for 2018 entry but please check our website for the latest information.*

# HALLS OF RESIDENCE

## Chesterman House

This is a purpose-built residence made up of 12 self-contained flats spread over two buildings.

Location	New Cross, SE14 6AG
Distance from campus	2 minutes' walk
Room type	Standard
Bathroom facilities	En suite
Kitchen facilities	Shared
Number of people per flat/floor	7 to 8
Number of people in the hall of residence	95
Internet	Yes – wifi
Bicycle rack	Yes
Lauderette	On site
Social space	Yes
Garden	Courtyard
Undergraduates	Yes
Postgraduates	No
Managed by	Goldsmiths Student Village managed by Campus Living Villages
<b>Weekly rent (2018-19)</b>	<b>£186.93</b>



# HALLS OF RESIDENCE

## Dean House

This is a purpose-built residence made up of 19 self-contained flats spread over two buildings.

Location	New Cross, SE14 6AT
Distance from campus	2 minutes' walk
Room type	Standard; medium
Bathroom facilities	En suite
Kitchen facilities	Shared
Number of people per flat/floor	5
Number of people in the hall of residence	95
Internet	Yes – wifi
Bicycle rack	Yes
Lauderette	On site
Social space	No
Garden	Courtyard
Undergraduates	Yes
Postgraduates	No
Managed by	Goldsmiths
<b>Weekly rent (2018-19)</b>	<b>£142-£145</b>



# HALLS OF RESIDENCE

## Loring Hall

This is a purpose-built residence made up of 55 self-contained flats spread over seven blocks.

Location	New Cross, SE14 6AH
Distance from campus	Within campus grounds
Room type	Standard; medium; large
Bathroom facilities	En suite
Kitchen facilities	Shared
Number of people per flat/floor	4 to 8
Number of people in the hall of residence	393
Internet	Yes – wifi
Bicycle rack/car parking	Bicycle rack; some car parking space available for students with mobility difficulties
Launderette	On site
Social space	No
Garden	Courtyard
Undergraduates	Yes
Postgraduates	No
Managed by	Goldsmiths
Weekly rent (2018-19)	<b>£163-£171</b>



**Goldsmiths**  
UNIVERSITY OF LONDON

# HALLS OF RESIDENCE

## Quantum Court

This is a purpose-built residence made up of more than 40 self-contained flats. Most rooms will be allocated to Goldsmiths students on one site.

Location	Shadwell, E1 ODY
Distance from campus	20-minute commute
Room type	Standard; medium; 1-bedroom flat
Bathroom facilities	En suite
Kitchen facilities	Shared; private if you're in a 1-bedroom flat
Number of people per flat/floor	1 to 6
Number of people in the hall of residence	133
Internet	Yes – wifi
Bicycle rack	Yes
Launderette	On site
Social space	Yes – with TV and pool table
Garden	Yes; and roof terrace
Undergraduates	Yes
Postgraduates	Yes
Managed by	Unite Students
Weekly rent (2018-19)	<b>£192-£204 (1-bedroom flat: £273)</b>



**UNITE STUDENTS**

# HALLS OF RESIDENCE

## Raymont Hall

This residence is made up of studios and corridor-style halls split over four buildings.

Location	Brockley, SE4 1LX
Distance from campus	20 minutes' walk
Room type	Standard; studio
Bathroom facilities	En suite
Kitchen facilities	Shared
Number of people per flat/floor	Varies depending on the building you're in
Number of people in the hall of residence	181
Internet	Yes – wifi
Bicycle rack	Yes
Launderette	On site
Social space	Yes – common room and study room
Garden	Yes
Undergraduates	Yes
Postgraduates	Yes
Managed by	Goldsmiths Student Village managed by Campus Living Villages
<b>Weekly rent (2018-19)</b>	<b>£173.72-£207.37 (Studio: £298.18)</b>



# HALLS OF RESIDENCE

## Surrey House\*

This residence contains corridor-style halls split between three buildings.

The main building houses students over four floors; each bedroom includes a sink. The house and link building have students over three floors, with a range of different en suite rooms and studios.

Surrey House is on the same site as Surrey House Annexe.

Location	New Cross, SE14 6PB
Distance from campus	5 minutes' walk
Room type	Standard; studio
Bathroom facilities	Shared; en suite
Kitchen facilities	Shared; private if you're in a studio
Number of people per flat/floor	Varies
Number of people in the hall of residence	145
Internet	Yes – wifi
Bicycle rack	Yes
Launderette	On site
Social space	Yes – with table tennis and study areas
Garden	Courtyard
Undergraduates	Yes
Postgraduates	Yes (studios)
Managed by	Goldsmiths Student Village managed by Campus Living Villages
<b>Weekly rent (2018-19)</b>	<b>£139.58-£207.37 (Studio: £213.60-£298.18)</b>



# HALLS OF RESIDENCE

## Surrey House Annexe

This residence is made up of six self-contained flats in one building. It's on the same site as Surrey House hall of residence.

Location	New Cross, SE14 6PB
Distance from campus	5 minutes' walk
Room type	Standard
Bathroom facilities	En suite
Kitchen facilities	Shared
Number of people per flat/floor	8
Number of people in the hall of residence	48
Internet	Yes – wifi
Bicycle rack	Yes
Launderette	On site
Social space	Yes – with table tennis and study areas
Garden	Courtyard
Undergraduates	Yes
Postgraduates	No
Managed by	Goldsmiths Student Village managed by Campus Living Villages
<b>Weekly rent (2018-19)</b>	<b>£186.93</b>



# HALLS OF RESIDENCE

## Town Hall, Camberwell

This building, which was formerly the town hall of the London Borough of Southwark, is made up of 41 self-contained flats. It's part new build, part conversion, and includes original heritage features.

Location	Camberwell, SE5 8UB
Distance from campus	15-minute commute
Room type	Standard; large; double*; studio
Bathroom facilities	Shared; en suite
Kitchen facilities	Shared; private if you're in a studio
Number of people per flat/floor	Varies
Number of people in the hall of residence	166
Internet	Yes – wifi
Bicycle rack	Secure indoor bike storage
Launderette	Yes
Social space	Yes
Garden	No – roof terrace instead
Undergraduates	Yes
Postgraduates	Yes
Managed by	Homes For Students
<b>Weekly rent (2018-19)</b>	<b>Standard/large: £172-£209 Double*/studio: £251-£318</b>

\* For single occupancy or two people sharing a double bed





# LOCATION OF HALLS OF RESIDENCE

Visit [gold.ac.uk/accommodation/halls](http://gold.ac.uk/accommodation/halls) for further information about our halls of residence.

- 1** Batavia Mews  
New Cross, SE14 6EA
- 2** Chapter Lewisham,  
SE13 7SD
- 3** Chesterman House  
New Cross, SE14 6AG
- 4** Dean House  
New Cross, SE14 6AT
- 5** Loring Hall  
New Cross, SE14 6AH
- 6** Quantum Court  
Shadwell, E1 ODY
- 7** Raymont Hall  
Brockley, SE4 1LX
- 8** Surrey House & Surrey  
House Annexe  
New Cross, SE14 6PB
- 9** Town Hall, Camberwell  
Peckham Road,  
SE5 8UB



## OTHER HOUSING OPTIONS

There are a range of alternative housing options available - whether you decide to make use of them straight away, or in future years of your degree.

### Privately rented homes

Renting privately is a good option if you're keen to maintain your independence, because you can decide where you live, who you share with, and the type of accommodation and lifestyle that suits you best.

New Cross is a transport hub, and so if you decide to rent here you'll not only be close to the Goldsmiths campus but also well connected to other parts of the capital. It also means that Goldsmiths is easily accessible from lots of other places - some of the areas favoured by students renting privately include Brockley, Greenwich, Lewisham and Peckham in South-East London. These areas are on the more affordable scale of London housing, and there are a lot of student rental opportunities available. As a Goldsmiths student you'll have access to the University of London Housing Services' database of private housing, with lists of flats and rooms available to rent, and a guide to private housing. Find out more at [housing.lon.ac.uk](https://housing.lon.ac.uk)

“*Renting privately has meant more choice about where I can live and has given me the opportunity to meet people from different universities.*”

### University-managed housing

If you're daunted by the possibility of finding good quality, private sector housing, don't worry. University of London Student Homes (part of the University of London Housing Services) can help you through this process. It sources houses and flats directly from landlords and then rents them to University of London students. The properties are then managed by University of London Housing Services.

Not only is this convenient - the houses and flats are selected so that they are close to the campus (with no more than a 30-minute commute) - but it also offers added peace of mind because you won't have to deal directly with a private landlord, and you will share with other undergraduate and postgraduate Goldsmiths students. You can find out more at [studenthomes.london.ac.uk](https://studenthomes.london.ac.uk)

### Home stay

You can also choose to live with a local family in a supported environment. This option provides people with flexibility and short stay options, because you can book accommodation on a weekly basis rather than signing a long contract. There's more information at [gold.ac.uk/accommodation/your-accommodation-options](https://gold.ac.uk/accommodation/your-accommodation-options)

### Supporting your search

We work closely with the University of London Housing Services who give free housing advice to Goldsmiths students on private renting. They offer contract checking, housing fairs, and 'find a flatmate' events.

The Goldsmiths Students' Union also holds flat sharing events, to make it easier for you to meet new friends who you may wish to live with. These events are usually held in September. Sign up to the Union's Facebook page ([facebook.com/goldsmithssu](https://facebook.com/goldsmithssu)) for more information, or visit [goldsmithssu.org](https://goldsmithssu.org)



# RESIDENCE LIFE

We have a sector-leading residence life team who are dedicated to improving the experience of our students - whether you're living in halls, renting privately, or staying at home while you're at university. The team is divided into two sections, made up of Campus Support Officers and Halls Ambassadors.

## Campus Support Officers

Available for all students regardless of whether you live in halls or somewhere else, Campus Support Officers provide out-of-hours pastoral support, which encompasses welfare, advice, and general assistance. So whether you're stressing over an essay, are worried about a friend, or you're just having 'one of those days', you can pop by for a chat and a cup of tea.

Find out more by watching our film at [vimeo.com/goldsmiths/campus-support](https://vimeo.com/goldsmiths/campus-support)



■ ■  
*It's a great way to immerse yourself into university life, I've met a lot of great people and had a lot of fun... I feel part of a community.*

## Halls Ambassadors

Halls Ambassadors are specific to halls of residence, and run student-led social activities that help create a sense of community among residents. There are lots of ways to get involved, meet new people, and enrich your time at university.





# APPLYING FOR HALLS OF RESIDENCE

On **24 April 2018 at 10am**, applications will open for new students applying for a place in our halls for September 2018. Applications will close on **26 June 2018 at 4pm**.

If you hold an unconditional or conditional offer and have **firmly accepted** your academic place at Goldsmiths (this includes deferred entry places) we will email you details of how to apply for halls in advance of applications opening.

If you have chosen Goldsmiths as your insurance choice you will be able to apply once your offer turns unconditional and you have **firmly accepted** your academic place.

Please be aware that we receive a higher number of applications than we have places available. Applications are ordered by date received (among other factors), so applying for accommodation as early as possible will give you the best chance of being allocated a place.

You can find out more about the application process at [gold.ac.uk/accommodation/making-an-application](http://gold.ac.uk/accommodation/making-an-application)



1

## Register

Visit [gold.ac.uk/accommodation/apply](http://gold.ac.uk/accommodation/apply) and register with your email address and Goldsmiths student reference number (we'll send you this by email).

Make sure you use an email address that you check regularly as this will be how we update you about the status of your application.

2

## Apply online

Complete and submit an online application for accommodation.

When you have successfully submitted an application you'll receive an automated acknowledgement email.

3

## Wait to hear from us

If you're allocated a place in our halls of residence we'll let you know via email.

This email will contain information about how to accept your place, how to agree to the terms of the contract, and how to pay a deposit if applicable.



# HOW WE ALLOCATE PLACES IN HALLS OF RESIDENCE

If you're a new undergraduate or postgraduate student, you can apply for halls if you have unconditional firm (UF) or conditional firm (CF) application status for your academic place.

You have UF status if you have accepted your place at Goldsmiths and have met all the academic requirements (eg A-level results; English language qualifications).

You have CF status if you have chosen Goldsmiths as your first choice university but haven't yet met the requirements of your offer from us (eg waiting for A-level results).

## Undergraduates

We will start sending accommodation offers from July to UF applicants, but the majority of accommodation offers will be confirmed and sent after A-level results are announced on 16 August 2018. UF and CF applicants will be allocated places based on the date they have applied, among other factors\*.

## Postgraduates

We will start sending accommodation offers from July to UF applicants. From then onwards we'll contact students after their application status changes from CF to UF\*.

## Reserve list and waiting list

If you apply for accommodation before the deadline but aren't initially offered a place in halls, we'll put you on our reserve list. If you miss the deadline, or if you're already living within Greater London (all zones), we'll put you on a waiting list.

If you're not allocated a place in halls, don't worry - there are a range of alternative accommodation options, and we can assist you with finding somewhere suitable.

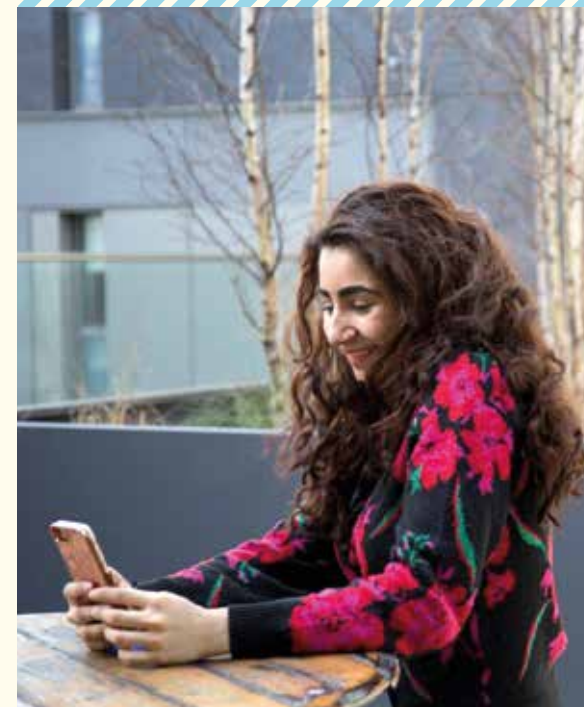
If places in halls subsequently become available we prioritise people on the reserve list. We're usually able to move on to housing people on this list by the start of term. After this we start housing people who are on the waiting list, and are usually able to do this by the end of the first term.

\* Allocation terms apply; see [gold.ac.uk/accommodation/making-an-application/how-we-allocate-places](https://gold.ac.uk/accommodation/making-an-application/how-we-allocate-places) for terms and conditions.

# FIND OUT MORE

[gold.ac.uk/accommodation](https://gold.ac.uk/accommodation)  
[accommodation@gold.ac.uk](mailto:accommodation@gold.ac.uk)

Watch our accommodation film at  
[youtube.com/GoldsmithsLondon](https://youtube.com/GoldsmithsLondon)



*Please note: the information in this guide was correct at the time of going to print (April 2018). Our halls provision sometimes changes year to year, so please check our website for the most up-to-date information. The images are genuine examples of rooms, but layouts and sizes may differ.*

Goldsmiths, University of London  
New Cross  
London SE14 6NW  
United Kingdom  
**gold.ac.uk**

