



Postgraduate Guide 2021 entry + GOLD 656

Goldsmiths
UNIVERSITY OF LONDON

68	Anthropology
70	Art
72	Arts Administration & Cultural Policy
74	Community Studies
76	Computing
78	Creative & Cultural Entrepreneurship
80	Curating
82	Design
84	Education
86	English & Creative Writing
88	History
90	Journalism
92	Law
94	Management
96	Media, Communications & Cultural Studies
98	Music
100	Politics & International Relations
102	Psychology
104	Social Work
106	Sociology
108	Theatre & Performance
110	Therapeutic Studies
112	Visual Cultures

ONE
GOLDSMITHS

LONDON
EYE

SOUTH
BANK

TATE
MODERN

THE
SHARD

LONDON
BRIDGE

TOWER
BRIDGE

HALLS

New Cross
Gate

HALLS

HALLS

HALLS

New Cross

GOLDSMITHS
CAMPUS

HALLS



Why Goldsmiths?

- 02** **Endless innovation, one inspiring legacy**
Introducing Goldsmiths
- 12** **A world of choice, one life-changing decision**
Immerse yourself in a subject you love
- 18** **Thousands of individuals, one supportive community**
A network of engaged students and staff
- 30** **Limitless sights, one sensational city**
Study in dynamic London
- 40** **All of London, one campus**
Our single-site campus
- 46** **Untold opportunities, one unforgettable experience**
Careers, facilities, support, accommodation
- 58** **Countless paths, one destination**
All the ways to find out more

-  GoldsmithsLondon
-  GoldsmithsUoL
-  GoldsmithsUoL
-  GoldsmithsUoL
-  GoldsmithsUoL
-  GoldsmithsUoL

Our postgraduate degrees

- 66** Types of postgraduate course
- 68** Degree programmes
- 114** Specialist programmes for international students

Next steps

- 124** How to apply
- 125** Entry requirements
- 127** Fees
- 128** Scholarships and funding
- 130** Visas and immigration
- 132** Index of programmes

Our priority remains the safety, health and wellbeing of the entire Goldsmiths community. In light of Covid-19, Goldsmiths endeavours to take all reasonable steps to provide educational services including teaching, examination, assessment and other related services, set out in this guide and other programme literature. It may be necessary to make changes to these services from time to time in response to the global pandemic. We will normally update our webpages with any changes or write to enquirers and applicants directly where possible. There may be occasions when changes need to be made with short notice, for example if public health guidance or governmental advice requires us to make any changes to our educational services. We encourage you to check our coronavirus applicant webpage for the latest information:

gold.ac.uk/staff-students/info/coronavirus/applicants



INSPIRING LEGACY

Endless innovation,
one inspiring legacy

Our academic history stretches back to 1891, but we are always looking forward. Full of students and staff who are inventive, imaginative and original, Goldsmiths provides an environment where new ideas flourish.



History. It's all about the past, right? But it's important for the future. A future you can direct, improve, design. A blank canvas for all your challenging theories and ground-breaking ideas.

We've got a reputation where all of that's concerned.

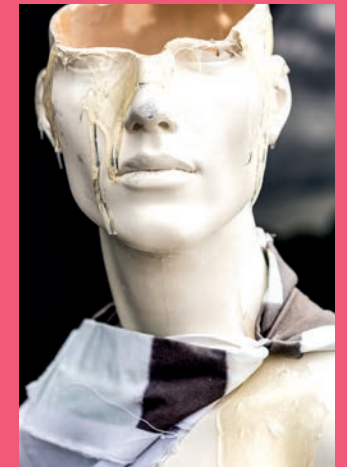
Leaders, believers, creators and debaters - they've all studied here, and they've been inspired to change things, challenge things, and pave the way in all sorts of areas.

Goldsmiths graduates have won Oscars, Turner Prizes and Ivor Novello Awards to name a few. But they also include people you might not have heard about who are passionate about improving society and making a difference - whether that's the social workers connecting with families in local boroughs, the sociologists critiquing the criminal justice system, or the designers suggesting new visions for the future. From the big names to the unsung heroes, and from traditional industries through to markets that don't even exist yet, your time at Goldsmiths will encourage you to engage with the world around you and inspire you to think big.

**“At Goldsmiths
you definitely
feel like you’re
part of something
new, original
and innovative.”**

David
PhD in English

LET YOUR IMAGINATION RUN RIOT



Some key moments in our history

Goldsmiths' Technical & Recreative Institute is founded, dedicated to improving the skills and knowledge of the working and artisan classes.



1891

Goldsmiths joins the University of London.

1904

Mary Quant comes to Goldsmiths to study an art diploma course. She later becomes an influential figure in the British design revolution of the 1960s.



1950

Blur perform their first gig at the Goldsmiths Students' Union.

1989

The Ben Pimlott Building opens, providing fine art studio space and cutting-edge psychology labs.



2005

BMus Popular Music graduates Katy B and James Blake are nominated for the Mercury Prize, with James Blake going on to win in 2013.



2011

The Goldsmiths Prize for fiction launches, recognising innovation in the genre.



2013

- A partnership with Curzon brings an on-campus cinema to Goldsmiths.
- Goldsmiths announces world-first Queer History Masters.

2016

Graduate Bernardine Evaristo (left, with Margaret Atwood) is jointly awarded the Booker Prize, for her novel 'Girl, Woman, Other'.



2019

1900



Goldsmiths introduces teacher training programmes.

1940

The Goldsmiths library is damaged by incendiary bombs during World War II. It has since been rebuilt, and has recently had a ground-floor makeover to provide additional social study areas, an events space, and a maker's zone.

Linton Kwesi Johnson, who studied BA Sociology in the 1970s, becomes the first Black poet to appear in the Penguin Modern Classics series.

2002

2010



The £20million Professor Stuart Hall Building opens its doors, housing several academic departments and industry-standard media facilities.

2014



Graduate Steve McQueen wins an Oscar for his film 12 Years a Slave.

2018

- Voted one of the UK's top creative and political universities by students. *Which? University*
- Goldsmiths Centre for Contemporary Art (CCA), an exciting new public gallery for London, opens.



Goldsmiths: a close-knit community,
a rich academic heritage, a creative
powerhouse, a thought-provoking place.

“My time at Goldsmiths set me on my career path. I learned the basics of documentary production and felt free to explore and experiment with styles and techniques. It was the first time in my education that creative risks were truly valued and encouraged.”

Brit

MA Visual Anthropology

“The teaching staff always supported students in their efforts to push boundaries and think about things in original ways, celebrating unforeseen intersections between the students’ work, the academy, and the world outside.”

Jacob

MA Research Architecture

“The programme gave me guidance, flexibility, and freedom to initiate projects, work collaboratively, and take risks.”

Kamal

MA Photography & Urban Cultures

“I was seeking an environment that could play a pivotal role in pushing me out of my comfort zone. Goldsmiths provided me with an enhanced vision to look at things from an altogether different perspective.”

Aisha

MFA Fine Art

Find out more

gold.ac.uk

“At times it is difficult to place into words how significant Goldsmiths has been for my professional and personal development. I met a variety of people on the course and built some lasting friendships. Goldsmiths offered me opportunities to learn, develop, question and experience new things.”

Anna
MA Dance Movement
Psychotherapy



“The course taught me to try and ‘decentre’ myself from a trained way of thinking, critiquing our own identities and philosophies in order to understand how we got where we are.”

Paul
MA Postcolonial Culture
& Global Policy





A world of choice,
one life-changing decision

Goldsmiths is where the world opens up before you, and invites you to transform it. Immerse yourself in a subject you love, develop your own ideas, and get inspired.

Challenge your old ideas, study a fascinating subject, and see the world differently.

IMMERSE YOURSELF IN A SUBJECT YOU LOVE

At Goldsmiths you can find creative and contemporary postgraduate courses that will challenge you to see the world differently.

Whether you want to explore the forces shaping society or gain the experience you need to pursue a career you're passionate about, you'll look at your subject in fresh ways that will spark your imagination.

Learn from world-leading minds who've been involved in some of culture and society's defining moments, and from practitioners who have direct connections with the creative, cultural and business sectors.

Many of our degrees are interdisciplinary, so you'll be encouraged to make connections between lots of different subject areas. This will illuminate your studies, and encourage you to view your learning in the context of the wider world.

We have a fantastic public events programme that covers thought-provoking talks, seminars, recitals and exhibitions. You'll find free events taking place nearly every day on campus or online - a great way for you to connect with contemporary issues, get inspired, and network.

Find out more

Explore our degrees on pages 68-113 and at gold.ac.uk/course-finder





"My experience at Goldsmiths was so much more than just learning new skills, it changed me on a deeper level. I feel I have grown throughout my training and opened up in ways I never knew were possible. I see my Goldsmiths training as a seed that has been gently planted in me, and I know that this seed will keep growing throughout my working and life experiences."

Gema
MA Dance Movement Psychotherapy

"The friendly atmosphere in the department, as well as its excellent academic reputation, made me decide to come to Goldsmiths."

Bomiegha
MPhil/PhD Educational Studies



"Studying at Goldsmiths was a game changer, in a professional and a personal context. Being part of such an international environment, and on a course with incredible individuals, has changed my entire way of thinking. I've become more tolerant, more critical, and more self-confident."

Timm
MA Political Communications



"While at Goldsmiths I learnt to follow my instincts, nurture relationships, and be open to people. It was an enriching and inspiring experience."

Charlotte
MA Visual Anthropology



**SUPPORTIVE
COMMUNITY**



Thousands of individuals,
one supportive community

Goldsmiths is a meeting ground for the brightest minds. The people who follow their own path and move with the times - sometimes in unexpected directions. And the people who shake things up.

CHANGE THE WORLD AROUND YOU

Surround yourself
with inspiring people
and ideas.

The people at Goldsmiths make the place. Every day, chance conversations in tutor groups, over coffee, between library shelves or through the Virtual Learning Environment (VLE, page 52) can spark life-long friendships, creative adventures or new enterprises.

From inspiring lecturers and tutors to innovative fellow students, you'll find a buzzing and energetic community of people who want to change things for the better.

Our academics are inventive, progressive and pioneering. They actively teach on our degrees, and they care about getting the best out of you. So you could have a Monday morning seminar with an award-winning historian, or the psychologist who's developed a tool that can help identify people at risk of developing dementia.

We're proud to have a community of staff and students that really values diversity. So whatever country or background you come from, whatever gender you identify as, or whatever your sexuality, you'll be welcomed to the campus and into the open-minded community.

And when you graduate from Goldsmiths, your relationship with us doesn't have to end. You'll become part of a creative and collaborative network of 75,000 former students spanning 140 countries across the globe.



"The major jewels at Goldsmiths were my classmates, and other fellow students on different programmes. The passion, intelligence, wit, and interests of them all made every day the most interesting day. The diversity in personal and professional backgrounds and interests made the dialogue rich and stimulating, and for that I will be forever grateful to have been able to study at Goldsmiths."

Michelle
MA Arts Administration
& Cultural Policy





“The MA has helped me develop critical thinking and analytical skills, which have improved the way I approach my job as a human rights campaigner. I thoroughly enjoyed my time at Goldsmiths, where I met some of the most inspiring people I know.”

Ambra
MA Human Rights, Culture & Social Justice

“My year at Goldsmiths was possibly the most formative and intellectually stimulating academic experience I have had so far.”

Maximilian
MA Media & Communications



“Goldsmiths was simply the best place I could have ever chosen for my postgraduate studies. You can feel the dynamism of the Goldsmiths community everywhere. There is such movement in students working on their artistic projects and collaborating to make new things all the time. Goldsmiths is such a special place because it brings together such a broad scope of disciplines. Psychology, drama, literature, film, fine art, computer science... they all converge in its potential for development thanks to critical thinking and creativity.”

Inés
Postgraduate student
in English & Creative Writing



“Goldsmiths is everything I could have hoped for and more. I chose it because I craved a multicultural experience, and London is the perfect city for that. There are 18 people on my course and 10 of us are from outside the UK. Studying at Goldsmiths is one of the best decisions I’ve ever made.”

Njoki
MA Television Journalism

“Goldsmiths is a place where the only limits are self-imposed. I cannot recommend enough such a fascinating educational adventure, which will enrich you from both a professional, cultural and civic perspective.”

Javier
MA Political Communications



How can academia respond to the Covid-19 pandemic? What can spatial design tell us about human rights violations? How do we tackle the climate emergency? Our pioneering academics, students and alumni are asking these questions - and many more besides - right now, carrying out work that has a wide-reaching impact on public life, and that encourages people to question and improve the world around them. Here's just a sample of what's been happening recently in the Goldsmiths community.

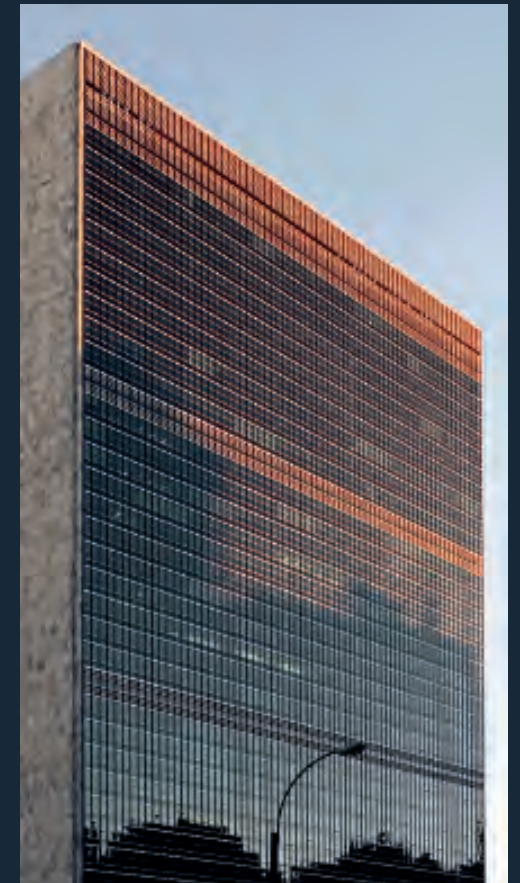


Contributing to Covid-19 response efforts
Staff across the Goldsmiths community have been using their expertise and time to respond to the Covid-19 pandemic. Academics from the Department of Computing (including Dr Theo Papatheodorou, left) have set up 3D printing production stations in their kitchens as part of a national campaign to provide health and social care workers in the UK with thousands of new face masks. Plastic goggles normally used by PGCE Science students in the Department of Education have also been donated to frontline staff at a local hospital. Meanwhile, a research group led by computer games designers, engineers and artists is working to create an interactive virtual reality visualisation of Covid-19, which will enable scientists and the public to better understand the underlying geometry and structure of the virus.

A RICH ACADEMIC ENVIRONMENT

Exposing state crimes and human rights violations

The Forensic Architecture research agency, based within Goldsmiths, has received a European Cultural Foundation (ECF) award for inspiring change in the way people shape societies. Forensic Architecture was praised by the ECF for seeing art as a way to expose injustice in communities, and for helping people to recover and rethink the past in order to change the world. The multidisciplinary team - which is made up of architects, filmmakers, coders, activists and legal experts - investigates human rights violations and state crimes through means of spatial design. They seek to provide new kinds of evidence for international prosecution teams, political organisations, NGOs, and international institutions such as the UN. Forensic Architecture recently exhibited at the Institute for Contemporary Art in London, and the Museo Universitario Arte Contemporáneo in Mexico City, and was also shortlisted for the 2018 Turner Prize. They encourage us to see the world and engage with it in different ways.



A new contemporary art gallery for New Cross

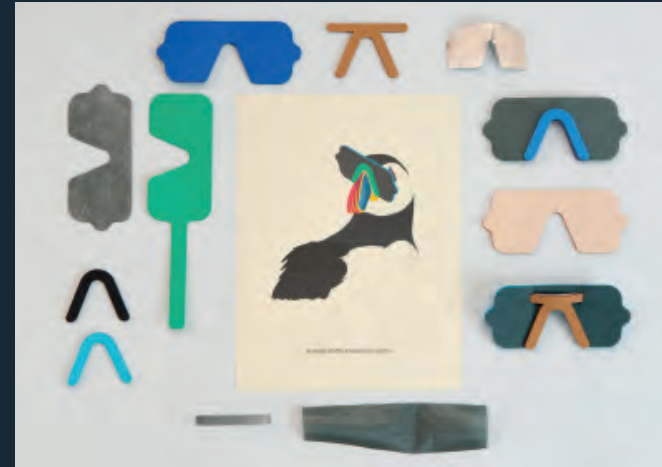
The Goldsmiths Centre for Contemporary Art (CCA), based on campus, opened to the public in 2018 with a solo exhibition by New York-based artist Mika Rottenberg. Subsequent shows have included a critically acclaimed presentation of work by the Chicago Imagists, and solo exhibitions of Kris Lemsalu and Alexis Hunter.

Goldsmiths CCA also hosts talks, performances, films and other events related to its exhibition programme (including online events during the Covid-19 pandemic). It is open to everyone and also features a programme of events for young people and communities in the Lewisham area.



Tackling the climate emergency

Goldsmiths has committed to cutting carbon use across the institution, with the aim of becoming carbon neutral by 2025. All beef products have been removed from sale in campus food outlets, a levy has been placed on bottled water to discourage the purchase of single-use plastic, and we have switched to a green energy supplier, meaning that all electricity used on campus comes from 100% renewable sources (such as windfarms and solar panels). The commitments were announced by the Warden of Goldsmiths, Professor Frances Corner OBE (left), following a campaign by Goldsmiths University and College Union (UCU) and the Goldsmiths Students' Union (SU) to adopt and implement a 'Green New Deal' for immediate emissions reductions. An action plan is now being developed in consultation with Goldsmiths colleagues and the SU.



Puffin sunglasses aid bill 'glow' discovery

The Interaction Research Studio within the Department of Design was recently tasked with developing protective sunglasses for puffins to protect their eyes from potentially damaging ultraviolet light that scientists were shining when trying to investigate photoluminescence in their bills. Dean Brown, a researcher in the studio, said: "The development of the sunglasses was a purely user-driven design process - the unusual thing was that the user in this case was a puffin." With the help of these sunglasses, an international team of scientists demonstrated photo-luminescence in the bill of the Atlantic puffin for the first time.



Joint Booker Prize win for Goldsmiths alumna Bernardine Evaristo

PhD Creative Writing graduate Bernardine Evaristo became the joint winner of the 2019 Booker Prize for her novel 'Girl, Woman, Other'. Bernardine shared the prize with Margaret Atwood, who'd been nominated for 'The Testaments'. 'Girl, Woman, Other' follows the lives and struggles of 12 very different characters. Mostly women, Black and British, they tell the stories of their families, friends and lovers, across the country and through the years. The judges described it as "a must-read about modern Britain and motherhood", and "an impressive, fierce novel". Writing about the story behind her book for The Guardian, Bernardine said: "Fiction excavates and reimagines our histories; investigates, disrupts, validates and contextualises our societies and subjectivities; exercises our imaginations through flights of fancy, takes the reader on transformational adventures, and probes and presents our motivations, problems and dramas. What, then, does it mean to not see yourself reflected in your nation's stories? This has been the ongoing debate of my professional career as a writer stretching back nearly 40 years, and we Black British women know, that if we don't write ourselves into literature, no one else will."

Find out more
gold.ac.uk/news



Limitless sights,
one sensational city

One of the world's greatest cities, connected to the very heart of global industry. Study in a dynamic London, meet students from 140 countries, and experience all the capital has to offer.

SENSATIONAL CITY

BENTLEY'S
COCOA
KRYK
TRAFFIC
LONDON
PICCADILLY
DOCK
EYE
BRIDGE'S
MUSEUM
ABBEY

A UNIQUE LONDON EXPERIENCE



London is a special place. A hub for industry, politics, and the arts. A melting pot of creativity and culture. Just like Goldsmiths itself, London is steeped in history but always offers something fresh and new.

From the endless cultural opportunities of galleries, theatre and music through to the tranquillity of the Royal Parks, and from great food through to nightlife that caters to every possible taste, there is plenty to keep you entertained and inspired.

Life in New Cross

Goldsmiths is in New Cross, South-East London - which is in travelcard zone 2. It's less than 10 minutes by train to London Bridge (close to the Shard and Borough Market), so you can easily experience some of the capital's most visited sights. We're also just 15 minutes from Shoreditch, popular for its bustling nightlife, arts, fashion and creative scene, and near to London's Silicon Roundabout - one of the UK's largest tech and enterprise hubs.

New Cross itself has a rich tradition of creativity, home to emerging musicians, artists and community leaders, as well as a thriving student population. You'll find a diverse range of

restaurants, cafés and shops nearby, including food from around the world - the Caribbean, China, Hungary, India, Korea, Lebanon and Turkey to name just a few places. There's also plenty of local nightlife, including pubs, comedy venues and some nearby clubs.

New Cross is a transport hub, well-served by buses (including many that run all night), the London Underground (which runs a weekend night service on Fridays and Saturdays), and other rail networks.

Local neighbourhoods

If you fancy a longer walk or a short trip on the bus or Overground, there are lots of other distinctive areas to explore, including Brockley, Camberwell, Canada Water, Deptford, Forest Hill, Greenwich, Lewisham, Peckham, Shadwell, Shoreditch and Stratford.

See our guides to favourite local spots at gold.ac.uk/area-guides

London on a budget

Being in London can be expensive if you're a tourist, but if you're studying here you'll be living like a resident, which means you can take advantage of discounts and money-saving



**VOTED
THE WORLD'S
BEST
STUDENT CITY**

QS Best Student Cities 2019

options. And there are lots! A benefit of being in a big city is that with a bit of creativity and planning you'll find that there are lots of ways to make your money go further.

Student discounts

Once you're a Goldsmiths student you can apply for a TOTUM card from the NUS (National Union of Students), which gets you money off things like entry to museums and galleries, cinema tickets, shopping, eating out, and fitness.

Postgraduates are eligible for an 18+ Student Oyster card, which provides 30% off travel costs in London. If you're 25 or under and will be travelling around the UK, a 16-25 Railcard is a good option as it's available to all students in full-time education. It will save you 30% off train tickets, and you can add it to your Oyster card and receive a discount on selected off-peak pay-as-you-go travel in London. If you're into museums and galleries then you might want to get a Student Art Pass. For a small annual subscription you'll get free or discounted access to many exhibitions and events in London and beyond. It's also worth shopping around for a student bank account, as some providers offer useful incentives when you open an account with them.





Free things to do in London

There is so much you can do for free in London. Websites such as timeout.com/london and londonist.com are good starting points to find out what's happening. Here are just a few ideas to spur your imagination.

- London has many free **museums and galleries** to visit, including the permanent collections at the two Tate galleries, the Victoria & Albert Museum, the Science Museum, British Museum, and Natural History Museum.
- There are also lots of cultural venues that hold regular free **talks and exhibitions**. The Southbank Centre and Somerset House in Central London are just a few examples.
- Exploring **London's markets** is a great way to find out about different neighbourhoods. From the second-hand treasures of Portobello Road in the West to Columbia Road Flower Market in the East, and from Camden Market in the North to Borough Market in the South, there is something for everyone. Near to Goldsmiths you'll also find markets in Deptford, Brockley and Lewisham.
- If you like **street art**, then London has plenty. Search online to find self-guided walking tours of places like Shoreditch, Brick Lane, Hackney and Peckham, and take yourself for a wander.
- With a bit of research you can also find many venues holding free **gigs, music recitals and other live music events**. There are also a few pay-what-you-can-afford **comedy nights** in the capital.
- Goldsmiths is in the heart of urban London, but you're never too far from **green space**. The city is full of beautiful parks and other opportunities to enjoy the outdoors, including cycle paths and canalside walking routes.
- London holds many **festivals and carnivals** over the course of the year, and some are completely free of charge, including the Notting Hill Carnival, Lambeth Country Show, Deptford X and Urban Village Fete.

Sustainable eating and living

London has active networks for ensuring that unwanted food, furniture and other items can be shared. Not only does this avoid unnecessary waste, it can also be a great way of saving money.

Explore apps like OLIO, websites like freecycle.org, and local area forums on social media to find a bargain.



“London is the perfect city for seeing and experiencing and getting inspired by different cultural events.”

Wanling
MA Film & Screen Studies

“One of my goals when coming to London was having the chance to work and broaden my professional and personal experience. Goldsmiths provides students with the voluntary work opportunities and key networking contacts to make this happen.”

Stephanie
MSc Cognitive & Clinical Neuroscience

Work opportunities

If you are keen to find work to support you during your degree, London offers a wealth of part-time opportunities. From freelance work to hospitality, and from office jobs to retail, it's possible to find work that fits around your studies and that will help develop your transferable skills. Please note that if you're coming to the UK on a student visa, you may be subject to work restrictions (see page 131).

As the centre of business and the creative industries in the UK and beyond, studying in London can also bring you closer to the large organisations that influence Britain and the world - whether you're interested in working in politics, the media, an NGO or the arts.

The Goldsmiths Careers Service (page 48) can provide advice on finding internship opportunities, networking, job hunting and standing out for all the right reasons during the application process.

Life as a commuter student

At Goldsmiths many of our postgraduate students live in London or the South East and decide to stay at home and commute during their studies. So if this applies to you, you won't be alone. As well as meeting fellow students from your course, there are also regular events held by the Students' Union (page 44) and services at Goldsmiths where you can get to know like-minded people.

New Cross is well connected by Overground and rail to other parts of the capital and beyond, so it's easy to get around. And when the Elizabeth Line (Crossrail) opens in future years this will make journeys to and from Berkshire, Essex, and West and South-East London even quicker.

Find out more
gold.ac.uk/life-on-campus/london



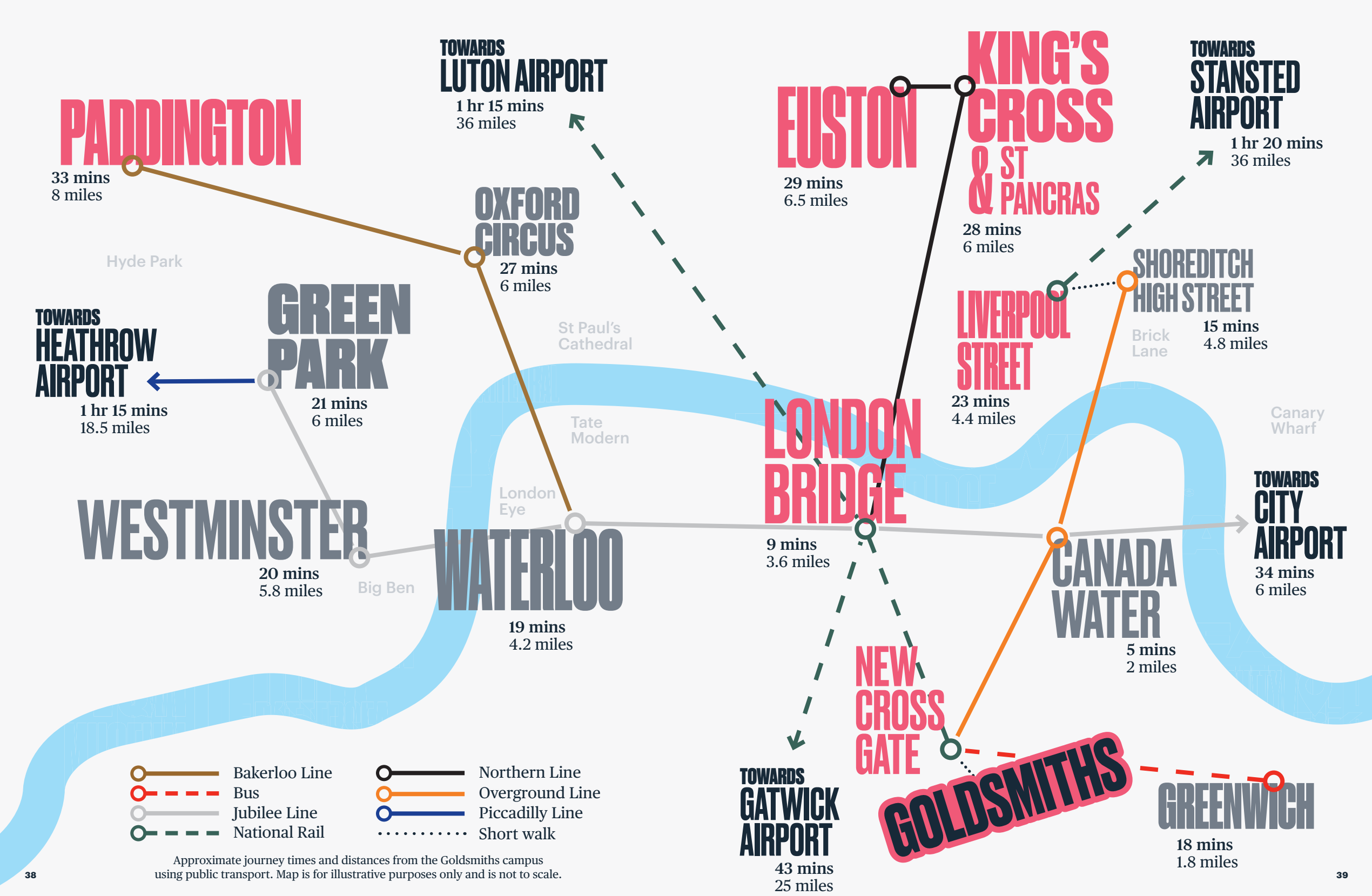
“London provided unique scientific, academic, and cultural opportunities that I would not have had elsewhere. I was able to engage with the rich academic context in London and the UK broadly, with opportunities to participate in conferences, workshops, and hands-on research at other institutions. London is an endlessly fun and vibrant city, and a year spent there is an opportunity not to be missed!”

Daniel
MSc Music, Mind & Brain

“Goldsmiths is a great community that will help you adapt to life in the big city and make you feel like a true Londoner with time. The diversity and inclusiveness here are second to none, enabling students to see multiple perspectives and broaden their horizons.”

Dan
MA Creative & Cultural Entrepreneurship





TOWARDS LUTON AIRPORT

1 hr 15 mins
36 miles

OXFORD CIRCUS

27 mins
6 miles

EUSTON

29 mins
6.5 miles

KING'S CROSS & ST PANCRAS

28 mins
6 miles

TOWARDS STANSTED AIRPORT

1 hr 20 mins
36 miles

SHOREDITCH HIGH STREET

15 mins
4.8 miles

LIVERPOOL STREET

23 mins
4.4 miles

Canary Wharf

LONDON BRIDGE

9 mins
3.6 miles

TOWARDS CITY AIRPORT

34 mins
6 miles

CANADA WATER

5 mins
2 miles

NEW CROSS GATE

TOWARDS GATWICK AIRPORT

43 mins
25 miles

GOLDSMITHS

GREENWICH

18 mins
1.8 miles

PADDINGTON

33 mins
8 miles

Hyde Park

GREEN PARK

21 mins
6 miles

TOWARDS HEATHROW AIRPORT

1 hr 15 mins
18.5 miles

St Paul's Cathedral

Tate Modern

London Eye

WESTMINSTER

20 mins
5.8 miles

Big Ben

WATERLOO

19 mins
4.2 miles

- Bakerloo Line
- - -○- - - Bus
- Jubilee Line
- - -○- - - National Rail

- Northern Line
- Overground Line
- Piccadilly Line
-○..... Short walk

Approximate journey times and distances from the Goldsmiths campus using public transport. Map is for illustrative purposes only and is not to scale.

All of London,
one campus

At Goldsmiths, nearly all of our teaching, learning and support facilities are in one place. It creates a close-knit community feel, where you'll soon be bumping into friends in corridors, and lecturers in coffee shops.

CAMPUS

OUR SINGLE-SITE, CLOSE-KNIT CAMPUS

Imagine a campus university, but in one of the world's most exciting cities. That's us.

At Goldsmiths you're well connected to enjoy the best of the capital, thanks to the area's fantastic transport links. But you also get to enjoy the friendliness and convenience of a single-site campus. It's where you'll be based for lectures and seminars, and where you can access important facilities like the Library and Careers Service. The only exceptions are MA/MFA students in the Departments of Art (see pages 70 and 80), whose studio space is currently based in nearby Deptford, and MA students in Design (see page 82), who spend some time working in a satellite site (currently also in Deptford).

The campus is a bustling place: wander through the corridors and you'll hear music students practising their scales, you'll see curating students installing exhibitions, and you'll get a sense of the thriving intellectual community by noticing adverts for the latest events taking place around campus on a regular basis.



Deptford Town Hall is one of the most historic buildings on campus, but its iconography - including statues representing naval figures associated with slavery and colonialism - proves contentious today. The Town Hall opened in 1905 as the headquarters of the former Metropolitan Borough of Deptford, with its decoration drawing on the area's maritime history. The Grade II-listed building was acquired by Goldsmiths in the late 1990s. Goldsmiths is now undertaking a community-led consultation to help guide decisions about the future of the statues and related iconography, and has asked for the statues to be included in the Commission for Diversity in the Public Realm being undertaken by Sadiq Khan, the Mayor of London.

Find out more
gold.ac.uk/news/statue-consultation

Campus highlights:

- The College Green, the perfect spot to enjoy a sunny afternoon
- Peak Street Café - where you can grab a coffee or enjoy tasty vegan and vegetarian meals
- George Wood Theatre, our newly refurbished 140-seat theatre
- Curzon Goldsmiths, the on-campus cinema, screening the latest cinematic releases during evenings and at weekends
- The Goldsmiths Centre for Contemporary Art (CCA), a public gallery hosting world-class exhibitions and bringing international artists to New Cross
- Laurie Grove Baths - one of three Grade II listed buildings on our campus, this former Victorian swimming baths is now home to art studios and exhibition space

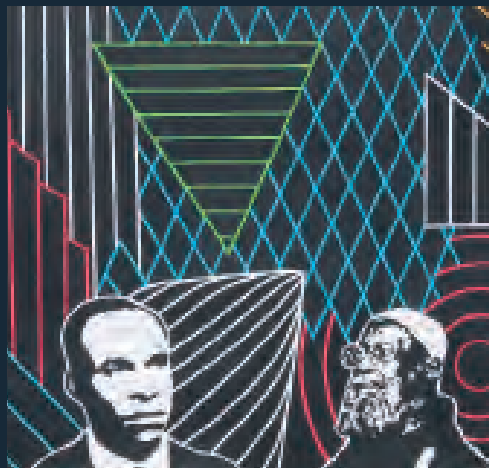
Find out more
gold.ac.uk/life-on-campus

STUDENTS' UNION

At the heart of our inspiring student community is the Students' Union (SU). Run for students and by students, it's a place to try something new, get immersed in the Goldsmiths community, and be inspired to change the world around you.

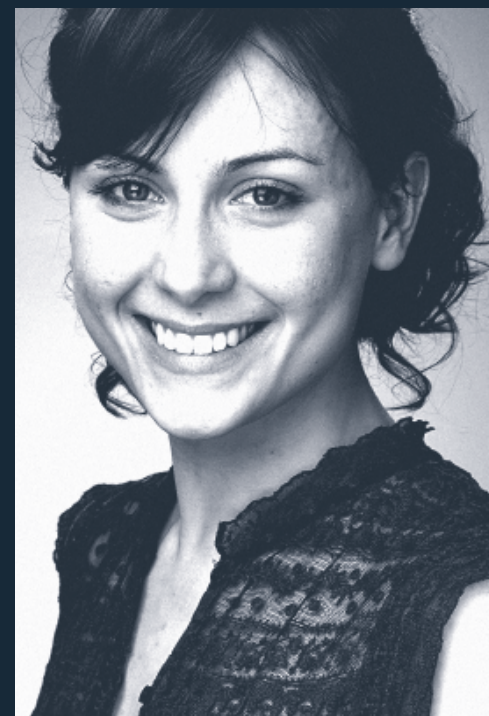
You could:

- Join a community of like-minded postgraduates, who regularly meet for networking and social events, including themed coffee breaks.
- Get involved in one of the five liberation groups supported by the SU, bringing together students who are BME (Black and minority ethnic), LGBTQ+, disabled, trans and non-binary, and women. These groups build networks and work together on campaigns.
- Develop skills and meet new people by joining some of the 100+ sports clubs and societies, spanning everything from faith groups to creative pursuits and competitive sport.
- Host a radio show or write for the student paper or award-winning magazine - a great way to pursue your creative interests and gain valuable experience for a future career.
- Campaign on an issue that's close to your heart. Goldsmiths students are known for their energy and activism, with the Goldsmiths Students' Union providing space and support to nurture the issues that students care about on campus and within wider society. There have been some important hard-won achievements for students in recent years, including a 'liberate my degree' campaign that focused on diversifying the curriculum and ensuring that liberation, representation and inclusion were at the forefront of every stage of the learning process.
- Socialise in the Union bar or café, and go to events including club nights, live music, quizzes, film screenings, performances and debates.
- Get involved in your academic community by representing the educational interests of students on your course.



"I feel like there's a place for me here. I've found that people at Goldsmiths really want to hear what I have to say. I've never felt like my voice was so valued before."

Amanda
Study Abroad student



"Goldsmiths is vast and yet I feel very much at home and part of the family. The campus is a lively and friendly place. It has been the most incredible few years of my life surrounded by supportive peers and tutors – extraordinarily challenging, but also rewarding."

Helen
MA Dance Movement Psychotherapy

[Find out more
goldsmithssu.org](https://www.goldsmithssu.org)

Untold opportunities,
one unforgettable experience

Make the most of all the opportunities available to you - from professional careers advice and networking events through to enhancing your study skills and making friends for life.

UNFORGETTABLE EXPERIENCE

YOUR FUTURE CAREER



From the moment you arrive at Goldsmiths, we want you to start thinking about your future so that you can make the most of all the opportunities available to you.

Whether you're already passionate about a particular field, or keen to keep an open mind about where postgraduate study will take you, we can help illuminate all the different paths your future could take.

Goldsmiths Careers Service

The Careers Service provides professional careers advice and can help you identify what careers you might be suited to.

You can access support including appointments with dedicated careers consultants, CV checks, and practice interviews, and there are resources where you can search for jobs and internship opportunities. You can even call on the experience of our Pre-entry Careers Consultant before you've enrolled.

Our Careers Service is part of The Careers Group, University of London - recognised as an international centre of excellence and the largest higher education careers service in Europe.

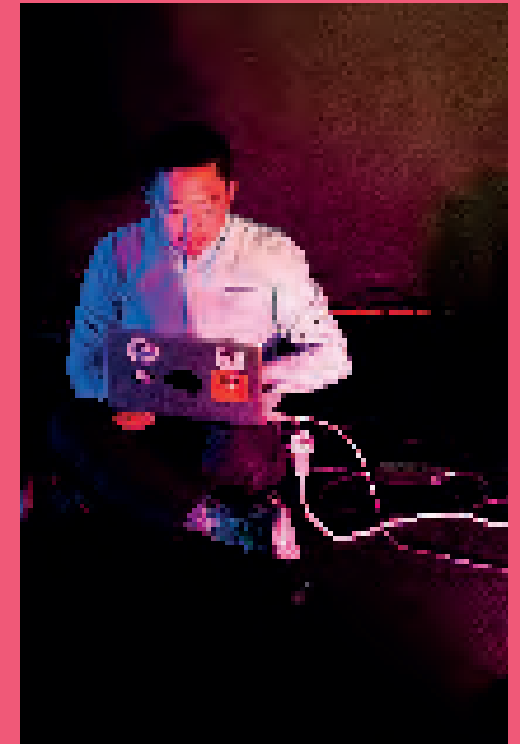
Some of the top employers of our graduates include:

NHS

TATE

BBC

APPLE



Industry links

We run regular careers fairs, networking events and industry panels where you can hear from professionals and recruiters working in sectors relevant to Goldsmiths students, including the media, charities and NGOs, publishing, and the arts. These events are a great opportunity if you're looking for full-time or part-time work, or placement and internship opportunities. They're also a fantastic way to gain a deeper understanding of different sectors.

We are also able to host focused engagement events looking at sector-specific topics, employer-led workshops, presentations, and panel events with industry professionals. Many Goldsmiths graduates also return to take part in these industry events.

If you're studying a practical degree you'll be supported by technicians and practitioners who have direct connections and extensive experience to support your interest in the career path of your choice.

Work placements

Not only do placements help you develop skills and gain experience, they're also great for helping you build a network of useful contacts.

Some of our degrees offer the possibility of an integrated work placement, and you can also access placements through the Careers Service. Students have recently completed placements at galleries, well-known charities, think tanks and media agencies. International students have work placement restrictions, but our Immigration Advisory Service can let you know what is possible within the terms of your visa. Find out more on page 131 and at gold.ac.uk/immigration

Enterprise Hub

Goldsmiths is set to open a new Enterprise Hub. The Hub will provide a workspace and a programme of events and activities that will offer practical support - and opportunities for collaboration - for local entrepreneurs, small businesses, freelancers, students and alumni. Find out more about the Hub and when it's due to open at gold.ac.uk/business/enterprise-hub

Support for international students

We run events and provide one-to-one support on finding work and planning for a career after you graduate. Goldsmiths also takes part in the Start-Up Visa scheme, which is a two-year visa and dedicated business support for graduates wanting to develop a credible business idea.

Expanding your professional network

Make use of Goldsmiths Connect, our online platform that puts you in touch with students, staff and alumni all over the world. It's somewhere you can ask for careers advice, develop collaborations, or even find a mentor.

Graduate destinations

Our former students are now working in graduate-level jobs in some of the following organisations: Alzheimer's Society; Barbican; BBC; Comic Relief; Department for Education; Financial Times; Home Office Digital; HSBC; Médecins Sans Frontières; NHS; Saatchi Gallery; Southbank Centre; Tate; The Economist.

Seeing the world: international opportunities

Fancy taking your studies overseas for a term or gaining international work experience during your time at university? There are a number of opportunities available for you to study or work abroad during your time at Goldsmiths and we have a team in place to help you along the way.

This is an opportunity to live in another country, make new friends, and develop your academic and employability skills. At postgraduate level we currently have a number of student exchange agreements as well as some funding for work and short-term opportunities abroad. These are updated on an annual basis, so it's best to check our website for the latest information: gold.ac.uk/students/go-abroad

Find out more
gold.ac.uk/skills-careers

9/10

of Goldsmiths students progress to work or further study when they graduate
Destinations of Leavers from Higher Education (DLHE) 2016/17 (based on postgraduate taught student respondents surveyed six months after graduation); please note this is the latest available data



“The networks developed with colleagues when working so intensely in this dedicated environment are lasting, and set each one of us in good stead for future collaborations as we each migrate from academic to professional environments.”

Steph
MFA Computational Arts

“Being at Goldsmiths was a very inspiring time, not only because of the course content, but also because of being in a class full of (aspiring) change makers from all over the world. It helped me immensely to build my global network.”

Melanie
MA Social Entrepreneurship



“I am a Peruvian journalist with 12 years of experience in both broadcast and print news. Searching for a Masters programme was a long process. However, the best and most closely aligned with my interests was at Goldsmiths because of its academic prestige and the practical nature of the course. I am learning to make documentaries as I make them! Also, I am being encouraged to develop my voice and style to tell the stories that move me.”

Belen
MA Filmmaking (Screen Documentary)

“My MA introduced me to such a broad range of industry professionals. Those contacts, along with the academic learning from the course, still inform my practice today – some 15 years later!”

Adrian
MA Arts Administration & Cultural Policy

FACILITIES TO ENHANCE YOUR LEARNING

For the majority of Goldsmiths students, all learning facilities are on our single-site campus, so you don't have to travel far to access them.

Library

The Library has space for individual and group study, a maker space, and an events space. You can access reading and audio-visual materials relating to the modules you study, and go to workshops where you can learn more about things like referencing and research techniques. In normal circumstances the Library is open 24 hours a day, seven days a week nearly every day of the year, however during the Covid-19 pandemic this hasn't been possible.

IT

There are PCs and Macs inside the Library and around campus that you can use for writing your assignments, and for accessing your Goldsmiths email account and shared files. There are also laptop loan lockers where you can borrow a machine for up to four hours.

Our Virtual Learning Environment (VLE), learn.gold, is useful for finding resources relevant to your degree, while in the Library you'll find a Digital Media Suite where you can use machines with specialist video- and audio-editing software. There's also a help desk open seven days a week to support you with IT queries you might have.

Wifi

You can connect to our wifi network, eduroam, from anywhere on campus. Eduroam is an international roaming service, so you can access it from many other universities in the UK and overseas.



Equipment loans

You can borrow audio-visual equipment like cameras, projectors, lighting and adapters on a short-term basis.

Print Services

Need to print your coursework, materials for an event, or business cards? Our in-house Print Services unit offers digital printing and finishing - perfect for producing your creative work.

Department facilities

Many of our practice-based departments have their own facilities, from labs and workshops to a theatre and TV studio (see pages 68-113).

University of London

As a Goldsmiths student, you benefit from being part of the University of London - the third oldest university in England. This means you'll be able to use Senate House Library, giving you access to millions of books, journals and digital resources, and beautiful study spaces in the centre of London.

Confucius Institute

Students on taught Masters degrees have the opportunity to take credit-bearing Mandarin classes (beginners to advanced), allowing you to develop language skills as part of your studies. And if you're a PhD student interested in taking classes you can get in touch with the Confucius Institute for more information.

Find out more

gold.ac.uk/facilities



SUPPORTING YOU THROUGH YOUR STUDIES

We're here to give you all the help and guidance you need while you're studying with us - from the first moments you're here, right through to graduation and beyond.

Welcome Week

Each year before the autumn term starts, there's a week packed full of welcome and induction events for new students. From campus and local area tours to meet-and-greets, they are all designed to help you get to grips with university life and make friends.

The Student Centre

There's a Student Centre where you can access help with all aspects of being a student at Goldsmiths - whether that's enrolments, fees, housing advice, general advice or assessments. You can also access:

Wellbeing Service

A team of specialist practitioners who offer a daily drop-in service and appointments to assist you with any challenges you may face while studying at Goldsmiths, including advice and support if you're experiencing personal, emotional or mental health issues.

Counselling Service

A free and confidential service led by a team of qualified therapists. Counselling is available for a range of reasons, including if you're experiencing anxiety, depressed feelings, or emotional difficulties that may or may not be connected to student life.



Disability Service

If you have a disability, long-term medical or mental health condition, or specific learning difficulty such as dyslexia, the Disability Service can help arrange any reasonable adjustments, equipment or support you need to study effectively.

Workshops and support groups

Want to find your voice in groups and seminars? Keen to learn more about mindfulness? We run workshops and support groups where you can explore any concerns you have, and build your skills and resilience.

Academic skills support

You can access academic skills support - including a range of workshops and one-to-one sessions - in the Library. These give you the opportunity to develop your academic and information literacy in all areas of study, including essay writing, presentation skills, researching, exam revision, dissertation planning, and time management. You can book one-to-one appointments with an academic skills tutor to help with any area of your studies, or with one of our resident Royal Literary Fellows - professional writers who can help you improve your essay-writing skills. The service is refreshed each year, so please check the website for the latest information: gold.ac.uk/asc

Developing your English language skills

We offer in-session academic language development courses for students enrolled on Goldsmiths degrees who don't speak English as their first language. The courses, offered by the English Language Centre, will help you develop English language skills related to your area of study, and improve your understanding of the conventions of academic writing and presentation style.

Immigration Advisory Service (IAS)

The IAS provides help and advice to all new and existing international students, from help with applying for your visa to study with us through to advice about working during or after your studies. They can also help you if you have any problems with your visa before or during your studies. Find out more on page 131.

Healthcare

If you're living in New Cross and the nearby areas you will be in the Lewisham and Greenwich healthcare trust and can register with our local contracted doctors, Amersham Vale Medical Practice. If you're an international student, please see page 130 for more information about healthcare access.

“My time at Goldsmiths was one of the best and hardest years of my life. Yet it set me up for a career I love, friends for life, and a confidence in my abilities that I didn't have before.”

Katrina

MA Human Rights, Culture & Social Justice

Multi-Faith Chaplaincy

There's a Chaplaincy Centre on campus where anyone is welcome to drop in during opening hours to meet with a chaplain, have a cup of tea, or just be in a quiet space. The Chaplaincy is a multi-faith team available for everyone, regardless of religious beliefs or practices. We also have a prayer room on campus, as well as several relaxation and mindfulness spaces.

Out-of-hours support

Our Campus Support Officers are available from 6pm to 6am weeknights and 24 hours at the weekends. Whether you're stressing over an essay, have concerns about a friend, or you're just having 'one of those days', you can drop by for a cup of tea and a chat.

Alumni benefits

As a Goldsmiths alumnus you'll join a creative and collaborative community of 75,000 former students, spanning 140 countries. This rich network can provide opportunities for collaboration via Goldsmiths Connect (page 50), and there are also reunion events and alumni groups you can join, as well as other ways to stay in touch. New alumni also continue to receive free professional careers advice and access to the Library for free for three years after they've left Goldsmiths.

Find out more

gold.ac.uk/students

ACCOMMODATION

Studying in an exciting city like London is an unbeatable experience. And it's even better when you know you're living somewhere safe, affordable and convenient.

We have a range of accommodation options - whether you prefer halls of residence on or near campus, or more independent living where you can mix with a wider London student population. Our Campus Support Officers and Residence Life team help ensure that, whether you're living in halls or at home, everyone can get involved in our lively and friendly campus community.

Halls of residence

There are around 1,500 rooms available in halls of residence - either around New Cross, or a short commute away (approximately 10-30 minutes), enabling you to live in different areas of London. Accommodation is self-catered, and generally made up of single-occupancy bedrooms within shared flats. Some studio flats and accommodation for couples (if both are full-time students) is also available. Halls of residence are either managed by Goldsmiths or in partnership with a private provider.

Rent includes all electricity, water and gas bills, basic possessions insurance and internet access. For 2020-21 the weekly rent for postgraduates ranged from:

- £149 - £216.50 for rooms with shared and en suite facilities
- £260 for en suite rooms suitable for double occupancy
- £220.50 - £318 for studio rooms with private facilities

All residents have access to security staff and/or office teams who are available 24 hours a day, seven days a week to provide a safe and secure living environment.

We guarantee an offer of a place in halls to all international students in their first year (subject to meeting advertised deadlines).

Please note that the map to the right reflects our halls of residence at the time of going to print. However, the housing stock can change year to

year, and we are working to secure more accommodation options in the local area. Please visit our website for the latest information, including advice about further housing options if you have additional accessibility requirements.

Privately rented homes

Renting privately is a good option if you're keen to maintain your independence, because you can decide where you live and who you share with. New Cross is a transport hub, so if you decide to rent here you'll not only be close to Goldsmiths but also well connected to other parts of the capital. Some of the areas favoured by Goldsmiths students renting privately include Brockley, Greenwich, Lewisham and Peckham in South-East London. These areas are on the more affordable scale of London housing.

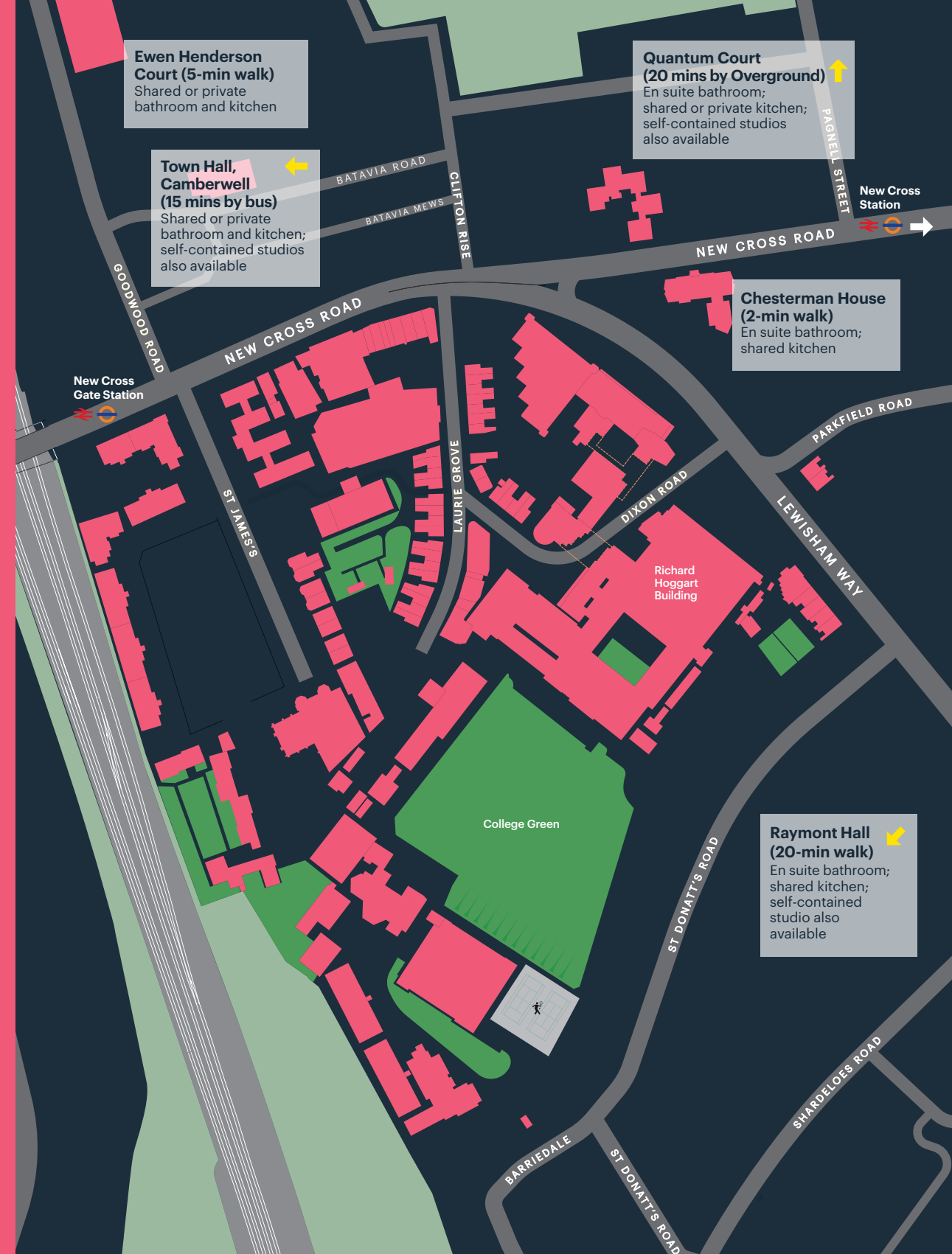
If you're an international student, some landlords may ask for visa details as part of the renting process. Our Immigration Advisory Service (page 131) can help you if you experience any issues with this process.

University of London-managed housing

As a Goldsmiths student you'll have access to the University of London Housing Services. They have a database of private housing, with lists of flats and rooms available to rent, and they also offer a helpful housing guide and a contract checking service.

Find out more

gold.ac.uk/accommodation



RETURNING TO STUDY

Many people studying postgraduate degrees come to university after a break from education, and often balance their studies with family and work commitments. If this is something you're thinking about, there are a few factors you'll probably want to consider to make the best possible decision for your individual circumstances.

Your motivations for studying

What are your motivations for studying - are you keen to improve or change your career? Or are you driven by learning more about a certain subject, and by the personal challenge involved in completing a postgraduate programme? A Goldsmiths degree will encourage you to think about the world in different ways, and could take you in lots of exciting, unexpected directions. As well as opening up different paths, it's been proven that a Masters degree can increase your earnings by over £200,000* over the course of a working lifetime. Thinking clearly about what you want to get out of studying can help clarify your approach to some of the other things mentioned in this section.

Time and money

Are you thinking of taking a career break and studying full-time? Or are you hoping to work part-time while studying? Studying full-time is a great way to fully immerse yourself in a subject and keep your momentum going, but it can represent a big financial commitment. Studying part-time while working is a more practical option for many people, and sometimes offers more time for you to reflect on what you're learning, but it can require strong organisational skills to effectively juggle the different parts of your life.

Either way, it's likely that you'll want to start planning your finances early to make sure you're fully informed about things like tuition fees (page 127) and any additional costs associated with studying, living costs, and any funding you may be eligible for. For example, at Goldsmiths we offer a range of postgraduate scholarships and

"I've had such a great experience at Goldsmiths. I'd been working for a long time and took the decision to study this year and I haven't regretted it. The teaching staff have been amazing and so supportive, and the lovely people on my course have all added to the great experience. The MA has provided invaluable teaching and guidance to help develop my skills."

Tara

MSc Social Research

fee waivers, and some students will also be able to apply for a Postgraduate Loan from the UK government. You can find out more on pages 128-129. It's also worth knowing that you can spread your tuition fee payments over several months. There's more information about this at gold.ac.uk/students/fee-support

If you're an international student, see page 131 for information about working during your studies.

Academic support

An understandable concern for many people returning to study is access to study support so they can develop their research, note-taking and essay-writing skills. At Goldsmiths there is lots of support available, including:

- Regular workshops led by study skills tutors, academics and subject librarians on topics such as academic writing, managing your studies, finding resources, exam skills, and presentation skills (see page 55)
- Support from your academic tutors, who will have office hours when you can drop in and discuss ideas and concepts covered in lectures and seminars, recommended reading, and assignments
- Orientation sessions in Welcome Week, with inductions from your academic department, the Library and other facilities (see page 54)
- Drop-in sessions covering academic skills and different subject areas run by the Open Book team (gold.ac.uk/open-book)

Personal support

Our student support teams provide assistance with a range of personal issues including wellbeing, counselling, managing a disability, faith and spirituality (see page 54). The Advice Service in Goldsmiths Students' Union provides additional, impartial support to students who make an academic appeal or complaint.

Careers support

A huge benefit of studying at university is the careers support. You'll be able to access the Goldsmiths Careers Service throughout your studies and for up to three years after you've graduated. The team can provide one-to-one careers consultations, advice on your CV and LinkedIn profile, interview and networking guidance, and advertise work placements and internships. There are full details on page 48.

Meeting people

Goldsmiths has a large postgraduate community, and over 60% of our postgraduate taught students are aged 25 or over^{††}. The campus is a friendly, inclusive and international place: there are lots of opportunities to meet people by taking part in department-led activities, attending regular events around campus (page 65), and joining general interest groups, clubs and societies in the Students' Union (page 44). The people you meet could become lifelong friends, or people to collaborate with in the future.

Course structure

At Goldsmiths we offer a variety of postgraduate programmes and study modes, so there's lots of opportunity to pick something that works for you. See page 66 for more information.





Get a taste of studying

Before coming to university, you can get an insight into your subject and the study experience at little or no cost:

- Attend **free public events** like lectures, book launches, panel discussions and exhibitions. Goldsmiths has an extensive public events series (page 65), as do places like the Wellcome Collection (wellcomecollection.org) and the V&A Museum (vam.ac.uk/whatson).
- **Websites** like The Conversation provide in-depth analysis from academics and PhD students writing about their research areas, and are a good way to access topical issues: theconversation.com/uk
- Platforms like FutureLearn offer hundreds of **free online courses** from specialist organisations - a great way to start exploring a subject you're interested in: futurelearn.com
- Goldsmiths offers reasonably priced **short courses** on topics including the arts, business and innovation, creative writing, film, music and politics. Taking a short course can give you a flavour of a subject area or insight into a particular academic, and can get you into the habit of doing regular assignments.
- **Blogs, podcasts and documentaries** can all ignite your imagination.
- Attend one of the next **Goldsmiths Postgraduate Open Evenings** (page 65) to find out more about life as a postgraduate.

"I was nervous about getting back into education, but everyone has been really supportive. The lecturers are always happy to talk, and the department runs seminars on subjects like research methods and structuring essays. These have been a great way to remind myself about the expectations of academia. I was also worried about the workload, especially as I'm working full-time, but I've found that as long as I use my weekends effectively I can get all the reading done on time."

Lucy
MA Literary Studies



Think about strategies for time and space management

There are lots of techniques you can adopt to make sure you use your time effectively when studying, particularly if you have work, family or caring commitments:

- Draw up a weekly planner to block out study time, and try and move into a separate space or location if you can, to help you focus. If you'll be studying in the evenings, give yourself a cut-off time so that you've got the opportunity to switch off before bed.
- Remember that at peak times of the year you might need to factor in additional study time for group work, essays and other assignments.
- Think about the ways you work best. Are you most alert in the morning, or the evening? How long can you concentrate on something before needing a break? Do you work well with background noise or do you need complete silence? Do you get distracted easily? If so, work around this by switching off your mobile phone and removing yourself from other distractions if possible.
- Make sure that you dedicate some time to properly relaxing - this is important to maintain a good work-life-study balance. Visit studentminds.org.uk to find useful resources and guides.

Employer support

If you're studying as part of your professional development, it might be possible to approach your employer for support - whether that's a financial contribution to your tuition fees, or the flexibility to take some study leave.

Making an application

Many people who undertake postgraduate study are managing life on a lot of fronts, and so the timescales for making decisions on what and when to study can take a while. And that's fine - there's no rush! Just be aware that you may need to prepare things like references and personal statements to complete your application.

For certain programmes you will also need to make sure you have prepared portfolios or undertaken specific work experience, so please see page 125 and check our website for the latest entry requirements.

There's more advice on what you'll need to make an application on page 124, and you can also speak to our course enquiries team at any point to find out more about your options: contact details are on page 64.

Find out more
gold.ac.uk/pg

[†]The Sutton Trust

^{**}Goldsmiths student headcount 2018-19 (data source: HESA)

EXPLORE

Social media

Follow us on our social channels to keep up to date with what's happening at Goldsmiths. You'll find lots of videos on our YouTube channel that can give you an insight into life as a student at Goldsmiths, including tours of our campus and facilities, and introductions to some of our academic departments.

-  GoldsmithsLondon
-  GoldsmithsUoL
-  GoldsmithsUoL
-  GoldsmithsUoL
-  GoldsmithsUoL
-  GoldsmithsUoL



CONTACT

If you have any questions about a particular programme you can find the convenor's details on programme pages on our website.

[gold.ac.uk/course-finder](https://www.gold.ac.uk/course-finder)

If you're thinking of studying a research degree you can explore our research centres and areas of academic expertise.

[gold.ac.uk/departments](https://www.gold.ac.uk/departments)

You can also get in touch with our Enquiries team, or chat to us online.

+44 (0)20 7078 5300
course-info@gold.ac.uk
[gold.ac.uk/contact](https://www.gold.ac.uk/contact)

“One visit to Goldsmiths had me hooked. On the MA, classes were engaging, inclusive and stimulating; tutors were interesting, informed and supportive; and fellow students were diverse and interesting.”

Sally
MA Sociocultural Linguistics

VISIT MEET

Our priority remains the safety, health and wellbeing of the entire Goldsmiths community, and so some of the ways to visit campus mentioned below may be affected by the Covid-19 pandemic. While this situation is ongoing, we will be moving some of our events online, and developing virtual tours where you can experience life at Goldsmiths from the comfort of your home. Please check our website for the latest information.

Open days

Visiting the campus is a great way to experience the friendly atmosphere and to find out more about the exciting things that happen here. You can chat to staff, take a tour, and attend talks and sample lectures.

You can book your place and check the latest event dates on our website.

[gold.ac.uk/open-days](https://www.gold.ac.uk/open-days)

Campus tours

Take a look around Goldsmiths and the local area on a campus tour led by a current student.

[gold.ac.uk/campus-tours](https://www.gold.ac.uk/campus-tours)

Applicant events

If you apply and are offered a place, you may be invited to an applicant event. This is an opportunity to find out more about your degree and the research culture at Goldsmiths, and to meet people in your department.

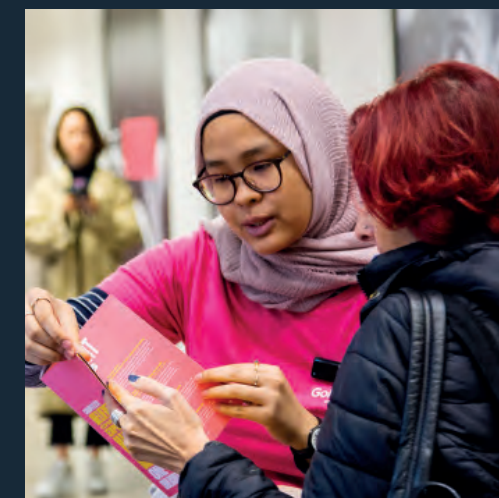
Events

Music recitals, talks and other public events take place almost every day at Goldsmiths, and many are completely free of charge.

[gold.ac.uk/events](https://www.gold.ac.uk/events)

We visit postgraduate exhibitions and fairs all over the UK and beyond, so it's possible to come and speak directly to staff who'll be able to tell you more about our degrees and answer any questions you have. Search UK-based postgraduate fairs online, or check our website to find out when the EU and international teams are visiting a city near you.

[gold.ac.uk/eu/events](https://www.gold.ac.uk/eu/events)
[gold.ac.uk/international/regions/visits](https://www.gold.ac.uk/international/regions/visits)



TYPES OF POSTGRADUATE COURSE

TAUGHT PROGRAMMES

Masters degrees

We offer the following Masters degrees at Goldsmiths:

- MA - Master of Arts
- MFA - Master of Fine Arts
- MMus - Master of Music
- MSc - Master of Science

Masters degrees are taught courses that often culminate in a research project or dissertation, which can form the basis for further study such as a PhD.

They usually last 12 months (full-time). Exceptions are our MFA programmes (pages 71 and 81), MA Art and Ecology (page 71), MA Art Psychotherapy, MA Dance Movement Psychotherapy (page 111) and MA Design: Expanded Practice (page 83), which are longer.

PGCerts and PGDips

We also offer some Postgraduate Certificate and Postgraduate Diploma programmes.

Distance learning

Distance learning options are available for a number of our programmes - please check the programme page of the degree you're interested in for the most up-to-date study options available.

RESEARCH DEGREES

Research Masters (MPhil, MRes)

These courses will encourage you to think independently and produce original work.

An MPhil (Master of Philosophy) is a research degree like a PhD (Doctor of Philosophy), but it involves a shorter period of research and a shorter thesis. All PhD students at Goldsmiths initially enrol on an MPhil/PhD programme. Those who want to pursue the PhD (and have made good progress with their research) transfer registration to a PhD. For a variety of reasons, other students opt for the MPhil and do not transfer registration to a PhD.

An MRes (Master of Research) is similar to an MPhil but also includes specialist training in research skills. It's often associated with the social sciences and is primarily a taught programme. The MRes usually lasts for one year (full-time).

PhD

A PhD (or 'doctorate') is a research degree, and is typically a requirement for anyone who wants to become an academic or professional researcher. It consists of a research project and a substantial thesis, which is guided by at least two supervisors. Full-time PhD students must complete their thesis before the end of four years of registration. For part-time students the corresponding period is eight years.

Studying an MPhil/PhD

Graduate study at Goldsmiths is a transformative experience that will prepare you for leadership and innovation in your chosen field. We have around 600 research students, and community and collaboration are vital to the research experience here.

Induction programme

In addition to the Goldsmiths-wide welcome programme (page 54), the Graduate School (see right) organises a specialised three-day induction at the start of the autumn term. Your academic department will also arrange an introduction to their facilities and any additional support you might need.

The structure of your research degree

You will have a main supervisor and a second supervisor. During your first three months at Goldsmiths your supervisors will help you draw up a research plan and set detailed objectives for your first year. They will also be available to offer advice and suggestions as the project evolves, and you'll receive regular one-to-one tutorials.

Throughout your programme you'll progress with your independent learning, but there are also lots of training and professional development opportunities that you can access. And each year you'll complete an annual progress report to reflect on how your research is developing.

You should aim to complete and submit your thesis within the allowed period for a PhD (four years full-time; eight years part-time). You'll be assessed on your thesis (which may contain a practical component depending on your research), and on an oral examination (viva voce).

Upgrading from MPhil to PhD registration

You'll usually begin your research degree by registering as an MPhil/PhD student. To complete a PhD you must upgrade to PhD registration after completing an agreed part of the research and training programme. For full-time students you must upgrade before 24 months (ideally earlier). For part-time students this must happen by 48 months.

Upgrading is a major milestone in your progress. It's also an opportunity to experience a viva voce on your work, which is valuable practice for your PhD viva later. If you are unable to upgrade to PhD registration you may be able to submit a shorter thesis for an MPhil qualification.

Training opportunities

During your PhD you'll undertake training to develop your research skills and techniques. Some of this training will be through your supervision, while some departments organise discipline-specific seminars and training courses. In addition, the Graduate School offers training in core research methods.

We also support you in thinking about how to plan for life after your PhD, and offer courses for early career researchers and for anyone who is planning to become an academic.

The Graduate School

Doctoral and graduate research is immensely rewarding. It requires innovation, drive and - at times - endurance. The Goldsmiths Graduate School can support you throughout this journey.

The Graduate School acts as your advocate within Goldsmiths, giving you advice and direction if you need it, and providing dedicated research facilities and training to make sure you're well equipped for the challenges of graduate research. It also offers funds to enable you to attend conferences and/or conduct research at other institutions, and to develop your own conferences and events at Goldsmiths.

The Graduate School organises a series of seminars and practical sessions that foreground key areas relevant to postgraduate research students, both in early stages and as they approach the latter stages of their PhD careers. These take place once a month during term-time, and are open to all MPhil/PhD students.

As a member of an institute of the University of London, you can also access the research events at the 10 Institutes of the School of Advanced Studies. Find out more at sas.ac.uk

Find out more

gold.ac.uk/graduate-school

Other study opportunities

In addition to full degree programmes we offer an exciting range of short courses on everything from life writing to music technology. They're a great way to get a taste of the academic culture at Goldsmiths.

gold.ac.uk/short-courses

Anthropology

Study anthropology in a lively and politically conscious department, where staff are active researchers, committed to publicly engaged anthropology across the world - from London to Ladakh.



“At Goldsmiths I had the chance to learn a lot and to benefit from the diversity and the rich cultural offer I found there. I acquired a more critical and deeper way of looking at things. I met great tutors who challenged and supported me, and inspiring students who became friends and people to collaborate with in the future.”

Vittoria
Video ethnographer
at Ipsos Mori
(MA Visual Anthropology)

Key facts

Choose between contemporary Masters degrees that cover diverse areas from social and visual anthropology to community development and museum practice. Several of our MAs include placement opportunities, giving you the chance to put your learning into practice in a professional setting.

Learn in a stimulating environment. Staff research infuses teaching, and you'll get the chance to attend public seminars, talks and film screenings in anthropology, documentary and the visual arts via our dedicated Centre for Visual Anthropology. And because Goldsmiths has a thriving international community, you'll get to study with a global mix of students, providing a rich range of anthropological perspectives.

You'll be able to access a wide variety of research areas including regional and subject specialisms, and you'll get to learn anthropological theory as well as research methods. Our wide range of option modules means that you could opt to explore broader questions of ideology, power, and global political economy.

Career inspiration

Our graduates have gone on to work as filmmakers, researchers, journalists and professional anthropologists for the United Nations, Amnesty International, the World Bank, charities, non-governmental organisations and corporate social responsibility consultancies.

Find out more
gold.ac.uk/anthropology



For the latest department news, read our blog at sites.gold.ac.uk/anthropology

Professional links



MA Anthropology & Museum Practice delivered in partnership with The Horniman Museum & Gardens



MA Applied Anthropology & Community & Youth Work is fully endorsed by the National Youth Agency for pay and qualification purposes

Fees and funding
See pages 127-129

Taught programmes

MA Anthropology & Cultural Politics

MA Anthropology & Museum Practice

MA Applied Anthropology & Community & Youth Work

MA Applied Anthropology & Community Arts

MA Applied Anthropology & Community Development

MA Migration & Mobility

MA Social Anthropology

MA Visual Anthropology

Research programmes

MRes Anthropology

MRes Visual Anthropology

MPhil & PhD Anthropology

MPhil & PhD Visual Anthropology

Check programme pages on our website for entry requirements; see pages 125-126 for more information

Art

The Department of Art specialises in making, curating and writing about contemporary art in a dynamic, critical and interdisciplinary environment. We count among our alumni some of the most influential and successful artists working today. This includes winners of a host of awards, including 28 nominees and eight winners of the Turner Prize.

“Goldsmiths introduced me to the idea of criticality (not to be confused with the act of merely being critical). It has provided me with a structure and compass with which to sustain my practice in a meaningful way. Goldsmiths made it possible to ask more pertinent questions, while at the same time making me aware of being part of a bigger interdisciplinary picture.”

Juan
MFA Fine Art

Key facts

We work with a network of highly accomplished artists, curators, galleries and museums to create an inspiring environment in which you can study and develop your own independent fine art practice.

The department is actively engaged with London’s world-leading professional art scene, and our location provides the opportunity to make the best possible use of the capital’s resources, including a diverse range of exhibitions and events. In 2018 we opened an important new public art gallery on campus - Goldsmiths Centre for Contemporary Art (CCA) - which launched with an amazing programme of contemporary art exhibitions, performances, films, talks and events, and has brought leading artists to New Cross (see page 28).

Our postgraduate taught programmes are located in a dedicated postgraduate centre for the study of contemporary art, based in Deptford - a 10-minute walk from the Goldsmiths campus.

Facilities

You’ll benefit from excellent practical teaching facilities, staffed by practising artists. Our art practice areas provide the highest quality support and equipment across a range of disciplines, including: graphics and time-based media; fine art print; casting and mould making; photography; constructed textiles; woodwork; 3D printing; metal; ceramics and textiles print and dye; and textiles stitch and fabric. We provide space for artists to facilitate their research and practice, temporary projects and exhibitions.



Find out more
gold.ac.uk/art

11TH
in the world
for art
QS World University
Rankings by
Subject 2019



Career inspiration

Our graduates progress to all kinds of careers. Many are successful and award-winning artists, while others are working as curators, video and media practitioners, writers and academics. We are establishing a dedicated professional development programme within our postgraduate programmes that will reinforce the already very strong reputation that a degree from the department affords our graduates’ prospects.

Taught programmes

MFA Fine Art

MA Artists’ Film & Moving Image

MA Art & Ecology

Check programme pages on our website for entry requirements; see pages 125-126 for more information.

You may also be interested in

Curating degrees, page 81

MFA Computational Arts, page 77

Graduate Diploma in Art, page 122

Research programmes

MPhil & PhD Art (supporting innovative research in fine art, curating, and art writing)

Arts Administration & Cultural Policy

Engage with the key issues in the formulation of arts and cultural policy, and the administration of the arts, including events and experiences. You'll have the opportunity to forge an international network of colleagues and develop your career.

"It was a fantastic experience to study at Goldsmiths. I was impressed by the course content and my professors. The courses are very practical, which helped me a lot. The academic staff are professional and patient, and their views have changed my attitudes towards understanding my career and even my life."

Lilja
Art Director, Hyundai Motor Company
(MA Arts Administration & Cultural Policy)

Key facts

You'll be taught by experienced staff from the Institute for Creative and Cultural Entrepreneurship (ICCE), and by practitioners from many companies, venues and national organisations, providing a direct link with the cultural professions.

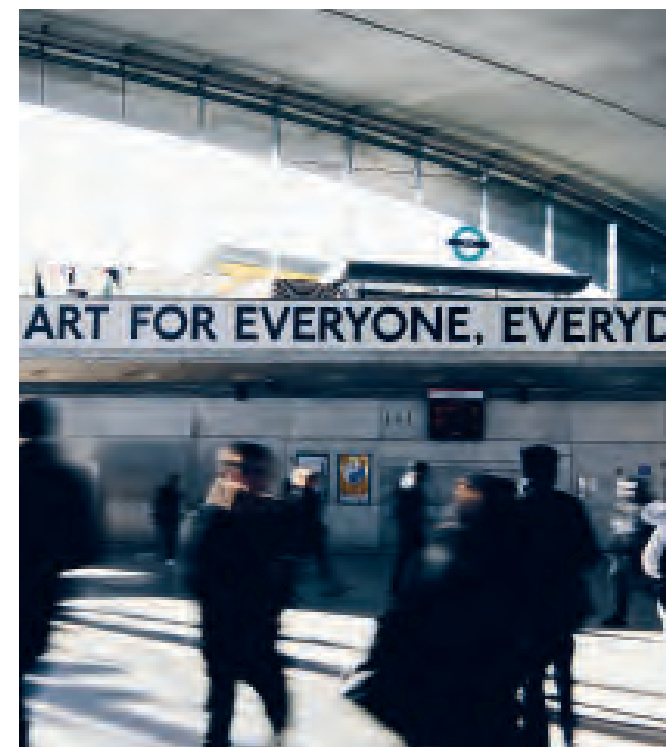
You'll get to learn in a rich international context. Many of our students come from overseas, providing valuable personal perspectives on arts administration and cultural policy in their home countries, which enhances the learning experience for everyone.

Being a global leader in the arts and one of the most important cultural centres in the world, London is the perfect place to study these subjects - whether that's through providing examples of cultural or event-led regeneration and tourism, connecting you with arts organisations, or helping you to develop an inspiring professional network for your future.

Career inspiration

Our graduates are working in the UK and across the world in senior positions in arts and culture, in major venues and organisations, and for governments. They're working at institutions including English National Ballet, Royal Society of Literature, Musée d'Orsay and Asia University Museum of Modern Art. Find out more at gold.ac.uk/icce/alumni-profiles

Find out more
gold.ac.uk/icce



You'll have the opportunity to take a placement with an arts organisation on the MA Arts Administration and Cultural Policy.

Taught programmes

MA Arts Administration & Cultural Policy

MA Cultural Policy, Relations & Diplomacy

MA Events & Experience Management

MA Tourism & Cultural Policy

Check programme pages on our website for entry requirements; see pages 125-126 for more information

You may also be interested in

Creative and cultural entrepreneurship degrees, page 79
MA Arts Administration & Cultural Policy: Music Pathway, page 99

Research programmes

MPhil & PhD Cultural Management & Creative Entrepreneurship

Community Studies

In the 21st century, communities have to think creatively to deal with the challenges they face. Through academic theory and practical fieldwork, you'll learn about the root of some of these challenges, along with inventive approaches for tackling discrimination and oppression.

“Studying at Goldsmiths gave me the unique opportunity to reflect on my practice and values while also recognising the need to navigate around the complicated youth work policy landscape. Our lecturers and tutors encouraged creative thought, challenged our intrinsic beliefs, and supported us to develop holistically as practitioners. No suggestion or question was insignificant, and none was too profound – each interaction gave room for us to critique our understanding of the sector that we were so passionate about.”

Roxi
MA Applied Anthropology
& Community & Youth Work

Key facts

You'll learn about key concepts relevant to community development - from gender and race to class and culture - along with more specific contemporary social issues like gentrification, transnationalism and mental health. You'll also develop anthropological research methods, enabling you to study communities by using techniques like surveys, in-depth interviews and participant observation.

You'll also undertake three placements in at least two different organisations, enabling you to learn through experience, and reflect on your own values and professional practice. And you'll develop a critical understanding of managing projects, staff and resources, how to prepare budgets and funding bids, and how to monitor and evaluate projects.

Our multicultural and collaborative learning environment encourages mutual respect and understanding, and values every student's individual contribution and perspective.

Career inspiration

Our former students have gone on to set up arts and community development projects, manage youth services, and become community artists and musicians. Some examples of recent graduate employment include: health youth worker for a London borough, leading on LGBTQ awareness; community development worker in a social work team in Hong Kong; and a mentor and befriending coordinator at a civil society equalities organisation.



We offer research opportunities in community and youth work, and in faith-based social action, religion and society.

Accreditation



MA Applied Anthropology
& Community & Youth Work



All Masters degrees below

Find out more
gold.ac.uk/community-studies

Taught programmes

MA Applied Anthropology
& Community Arts

MA Applied Anthropology
& Community Development

MA Applied Anthropology
& Community & Youth Work

Research programmes

MPhil & PhD Community & Youth Work

MPhil & PhD Religious Studies

Check programme pages on our website for entry requirements; see pages 125-126 for more information

Fees and funding
See pages 127-129

Computing

At Goldsmiths you'll find a special approach to computing. From developing computer systems that compose music and build virtual environments, to defining and implementing new social media tools, computing here is creative and innovative. You'll be encouraged to take a fresh approach to the subject and use it to invigorate the world around you.



“The leadership of this programme was amazing – probably the best supervision and mentorship throughout my higher education. The syllabus has been created in such a way that any layperson will get the chance to learn machine learning, coding, natural language processing and big data. It is a valuable programme, with so much mentorship as well as many project opportunities.”

Gabriel
MSc Data Science

Key facts

You'll gain an excellent understanding of existing commercial practices while developing a wide appreciation of the discipline, meaning that your knowledge and skills can adapt to this ever-changing industry.

Benefit from our distinctive approach to teaching. We aim to develop your creative skills alongside your technical skills, and you'll learn from our expert team of friendly, supportive staff who are working at the frontiers of digital practice and research.

We get a terrific range of guest speakers from industry delivering talks in the department: from key players at the biggest computing and tech organisations in London through to start-ups and charities. So there are plenty of opportunities to enrich your studies.

Facilities

Digital fabrication lab (a place for radical experimentation) | VR, motion capture and games facilities (to forge links between digital technologies and artistic practice)

Career inspiration

Many graduates are extremely successful in securing jobs in their field within just a few months of graduation. They've taken up roles at Sony SCEE, Geomerics, IdeaWorks, Bossa Studios, Telegraph Media Group, Time Out, Unit9, and Uniblue Systems.

Find out more
gold.ac.uk/computing

Kee up to date with department news via social media:
[@goldcomputing](https://twitter.com/goldcomputing) (Twitter)
[@gold.computing](https://www.instagram.com/gold.computing) (Instagram)

Taught programmes

MA/MFA Computational Arts

MA Computer Games Art & Design

MA Independent Games & Playable Experience Design

MA Virtual & Augmented Reality (3D Graphics & User Experience Pathway)

MSc Virtual & Augmented Reality (Programming & Computer Science Pathway)

MSc Computational Cognitive Neuroscience

MSc Computer Games Programming

MSc Data Science (Distance Learning mode also available)

MSc User Experience Engineering

MA/MSc Digital Journalism

Research programmes

MPhil & PhD Arts & Computational Technology

MPhil & PhD Computer Science

Check programme pages on our website for entry requirements; see pages 125-126 for more information

Creative & Cultural Entrepreneurship

Develop your creative potential and understanding of entrepreneurship's relevance to the cultural and creative industries, and its impact on society. You'll be supported to transform your ideas into sustainable enterprises that can have a strong social and aesthetic effect.

"Goldsmiths has been a great opportunity for me to learn from creative people and be exposed to an array of methods that have taught me to think outside the box. The staff were always supportive and helpful, and I felt like our opinions mattered. For me, the most important thing I have achieved is meeting and getting inspired by some amazing people. There have been business and personal successes along the way, but the people I've met and friends I've made have been so much more valuable."

Catalina
MA Creative & Cultural Entrepreneurship

Key facts

We'll encourage you to take a creative, entrepreneurial approach to the generation of new ideas, businesses and enterprises, and the infrastructure that supports them.

You'll be taught by experienced staff from the Institute for Creative and Cultural Entrepreneurship (ICCE), by Goldsmiths staff from partner departments, and by practitioners and alumni from business, venues, organisations and social enterprises, providing a direct link with current practice and policy.

London is a global hub for the creative and cultural industries and for social enterprise, and is therefore an ideal base for learning about these fascinating contemporary subjects, and putting your learning into practice.

Our MA Creative and Cultural Entrepreneurship provides the opportunity to develop specialisms in Computing, Design, Fashion, Leadership, Media and Communications, Music, and Theatre and Performance.

Career inspiration

Our alumni have created businesses, gained investment, and won awards for innovation and creative enterprise. Others are working in the UK and around the world in senior positions in arts and culture, in major venues and organisations, and for financial institutions and governments. Find out more at gold.ac.uk/icce/alumni-profiles

Find out more
gold.ac.uk/icce



These programmes are shaped around your ambition - you'll develop the theory, tools and networks to expand your thinking and put your ideas into practice.

Taught programmes

MA Creative & Cultural Entrepreneurship (with pathways in: Computing; Design; Fashion; Leadership; Media & Communications; Music; Theatre & Performance)

MA Luxury Brand Management

MA Social Entrepreneurship

PGCert Museums & Galleries Entrepreneurship

Check programme pages on our website for entry requirements; see pages 125-126 for more information

Research programmes

MPhil & PhD Cultural Management & Creative Entrepreneurship

You may also be interested in
Arts administration and cultural policy degrees, page 73

Curating

Develop professional and academic excellence in the field of contemporary curatorial practice by joining a postgraduate programme in our world-leading Department of Art. Our graduates work in top museums and galleries around the world, and are hugely influential in the development of contemporary art globally.

“The Masters had a great influence on my way of thinking about and approaching the world. I felt like I was at the epicentre of where new ideas were being formed, which was very exciting. The programme seemed very on point regarding contemporary issues, notably around technology, ecology, politics, gender... The way we approached things was open and thorough with a sense of urgency: this really allowed us to exercise our thinking and develop new ideas.”

Oona

Director of Publications,
Galerie Thaddaeus Ropac,
Paris (MFA Curating)

Fees and funding
See pages 127-129

Key facts

You'll take up the challenge of exploring contemporary curating as an artistic, social and critical undertaking, and you'll be encouraged to innovate and experiment with your practice.

The department is actively engaged with London's dynamic and world-leading professional art scene. We work with a network of highly accomplished artists, curators, galleries and museums in London (and internationally) to create an inspiring environment in which you can study and develop your curatorial practice. In 2018 we opened an important new public art gallery on campus - Goldsmiths Centre for Contemporary Art (CCA) - which has brought leading artists to New Cross (see page 28).

At Goldsmiths you'll be working alongside some of the most creative and ambitious art students in the world, creating opportunities for collaborations, to build professional networks, and to engage directly with the very best of your generation. The MFA programme is located in a dedicated postgraduate centre for the study of contemporary art, based in Deptford - a 10-minute walk from the Goldsmiths campus.

Opportunities

The course offers you the possibility of realising curatorial projects through external associations (currently with Chisenhale Studios, Cubitt, Deptford X, EnclaveLab and the Swiss Church), and by engaging directly with Goldsmiths CCA on its events programme. We also offer opportunities for professional development through our placements at Tate Modern and collaboration with New Contemporaries.



Career inspiration

Recent employers of our MFA Curating students and graduates include Tate Modern, the Guggenheim Museum, Venice Biennale, White Cube Gallery, Portikus and Kunst-Werke.

Taught programmes

MFA Curating

Check programme pages on our website for entry requirements; see pages 125-126 for more information

You may also be interested in

Art degrees, page 71
Graduate Diploma in Art, page 122

11TH
in the world
for art
QS World University
Rankings by
Subject 2019



Find out more
gold.ac.uk/art

Research programmes

MPhil & PhD Art (supporting innovative research in fine art, curating, and art writing)

Design

Push the boundaries of design at Goldsmiths. You'll challenge the discipline's role and conventions, unshackling the design process from traditional specialisms and entrenched methods. In doing so you'll become aware of understanding and approaching design as a way to address and affect positive change within contemporary society.



"The main reason for choosing this course was to have the opportunity to reframe my professional practice in an international and research-based environment. In an era of radical change, where algorithms replace designers, I realised that it is necessary to define first what the problem is, rather than solve it."

Jinyoung Lee
MA Design: Expanded Practice

Fees and funding
See pages 127-129

Key facts

Our post-disciplinary practical programme encourages you to examine and transform your design practice into a critical and social undertaking. It's not about rigidly positioning you as a particular type of designer (eg product, graphics, interaction) - instead you'll explore topics and issues affecting society right now that require a responsive, fluid and collaborative approach to design. The programme is currently structured around the following thematic areas of investigation (studios): Communication and Experience; Fashions and Embodiment; Innovation and Service; Interactions and Engagement; Spaces and Participation.

On the 15-month Masters you'll be taught through project-based learning via prominent practitioners, leaders and visiting speakers, and you'll have dedicated studio space, as well as access to industry-standard workshops and computing labs.

Through an Extended Study module you could choose to undertake a professional placement or masterclass, immerse yourself in field research, or take part in a conference programme.

Facilities

Studio space | Workshops with digital equipment | Computing suites

Career inspiration

Our graduates don't just feed the industry - they shape and lead it. Typical careers for design alumni include setting up their own studios, and working as designers and consultants for established agencies, and in the charity, heritage and public sectors.



Find out more
gold.ac.uk/design

Taught programmes

MA Design: Expanded Practice

Check programme pages on our website for entry requirements; see pages 125-126 for more information

You may also be interested in

MSc User Experience Engineering, page 77
PGCE (Secondary): Design & Technology, page 85

Please note that the activity for the MA Design: Expanded Practice will operate across both the Goldsmiths campus and a satellite site, currently in Deptford Bridge (10 minutes' walk from New Cross).



11TH
in the world
for art and design
QS World University
Rankings by
Subject 2019

Research programmes

MPhil & PhD Design

Education

Higher Degrees & Initial Teacher Training

The preparation of teachers is central to the early history of Goldsmiths (we've been educating teachers since the early 1900s), and we proudly continue this tradition. Building on these strong foundations, we offer high-quality, research-based teaching via programmes that ask fascinating questions about education in the widest sense of the word.



"I thoroughly enjoyed the MA. Each module taught me a different aspect about writing creatively and encouraging students to be fascinated by the writing process. I am now confident in planning lessons, projects and group activities that will excite students and produce great writing."

Sania
MA Creative Writing & Education

Key facts

Education is a window through which to view the world, with the power to define who we are and how we live. We'll encourage you to question, critique and explore, with a strong focus on the themes of social justice and inclusion. You'll investigate the tensions that can arise in a system that advocates education for all, but prevents the full participation of some groups within society.

We're a friendly department, and you'll receive individual attention and support for your studies. You'll learn from academics who are leading the field and researching areas including identity, language, literacies and multilingualism, and arts and learning.

Our MA programmes are distinguished by their emphasis on the interplay between culture, language, identity and creativity, while our PGCE programmes provide opportunities in Primary and Secondary teaching, covering a range of subject areas and study modes.

Career inspiration

Our former students are now working as teachers and lecturers, education strategists, consultants, researchers, and community liaison officers.

Find out more

gold.ac.uk/educational-studies



You can also take standalone Continuing Professional Development (CPD) modules in this department.

Taught programmes

- MA Arts & Learning
- MA Children's Literature
- MA Children's Literature: Children's Illustration
- MA Creative Writing & Education
- MA Education: Culture, Language & Identity
- MA Multilingualism, Linguistics & Education

Research programmes

- MPhil & PhD Art Practice & Learning
- MPhil & PhD Education

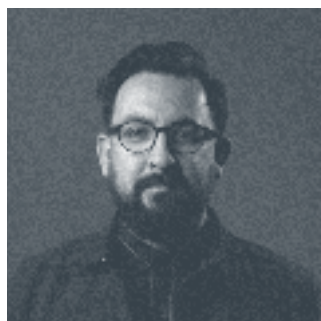
Initial Teacher Training (ITT) programmes

- PGCE (Primary)
- PGCE (Secondary) Standard Programme:
Art & Design; Biology; Chemistry; Design & Technology; Drama; English; Mathematics;
Media Studies with English; Modern Languages; Physics
- PGCE (Secondary) Part-Time Programme:
Biology; Chemistry; Design & Technology; English; Physics

Check programme pages on our website for entry requirements; see pages 125-126 for more information

English & Creative Writing

Study English and creative writing from a variety of critical and creative perspectives. From English, American, Caribbean and comparative literary studies through to critical theory, from linguistics and translation to creative writing, and from Shakespeare to the present day, you'll be able to explore the subject in a thriving research department that combines solid theory with innovative approaches.



“My time at Goldsmiths was one of the loveliest of my life. It did more than prepare me for a discussion on the failure of language in Faulkner: Goldsmiths taught me how to communicate ideas and how to question the status quo, and it stoked my inquisitive nature. With a diverse student population, you are surrounded by equally passionate, adventurous and thought-provoking people.”

Keelan
Senior Strategist (studied an MA in the department)

Key facts

You can study texts and discourse from different periods, backgrounds and media. Our staff have diverse research specialities - from ecocriticism to Black British writing, from sociolinguistics to theatre translation, and from continental philosophy to European Decadence. So they're well placed to help you develop your own interests whether they lie in British, American, Caribbean, postcolonial, comparative or world literature; in different aspects of linguistics; in translation theory and practice; or in creative writing, whether as poet, or as a fiction or creative non-fiction writer.

London offers an excellent range of research facilities in literary, linguistic and cultural studies. We work closely with the University of London's School of Advanced Study and its specialist institutes for English Studies, Modern Languages Research, and the Study of the Americas. You can also apply for a reader's pass for the British Library.

You'll be able to stay in touch with current debates in literature and with the most recent writing through our regular public events and our dedicated Writers' Centre (gold.ac.uk/writers-centre), as well as the department's Goldsmiths Prize activity (see top right).

Career inspiration

Our graduates have gone on to have successful careers as published writers and playwrights. Six of our alumni were recently awarded Fellowships by the Royal Society of Literature as part of its inaugural 40 Under 40 scheme. Others have gone on to pursue careers in journalism, advertising, teaching, academia and research.



Find out more
gold.ac.uk/ecw

Fees and funding
See pages 127-129



The department is home to the annual Goldsmiths Prize for novel fiction (gold.ac.uk/goldsmiths-prize), bringing some of the most innovative contemporary writers to campus for readings and discussions.

Taught programmes

MA Black British Writing

MA Children's Literature

MA Creative & Life Writing

MA Creative Writing & Education

MA Literary Studies (with pathways in: American Literature & Culture; Comparative Literature & Criticism; Critical Theory; Literature of the Caribbean & its Diasporas; Modern Literature; Romantic & Victorian Literature & Culture; Shakespeare: Early & Modern)

MA Multilingualism, Linguistics & Education

MA Sociocultural Linguistics

MA Translation

Research programmes

MRes English

MPhil & PhD Creative Writing

MPhil & PhD English, Comparative Literature or Linguistics

MPhil & PhD Literary & Critical Theory

MPhil & PhD in Translation

MPhil & PhD in Translation by Practice

Check programme pages on our website for entry requirements; see pages 125-126 for more information

History

History at Goldsmiths is interdisciplinary, comparative and research-led. Our staff are internationally recognised, award-winning experts in their fields, with particular specialisms concentrated around the interplay of political, religious, intellectual and cultural differences across time and place.

“On the MA we focus on bringing queer theory and queer identity into the practice of history: what is queer in a historical setting, and how do we define it in research? As a queer person myself I’m very aware of the power of being able to identify people and practices throughout history, and I’m passionate about researching that.”

Maayan
MA Queer History

Key facts

Our teaching encompasses Asia, Africa, Britain, Western and Eastern Europe, so you’ll have the opportunity to study histories that go beyond the Western sphere, and learn about the experiences of understudied and often marginalised groups of people.

The department is small and friendly, with a dynamic postgraduate community, and the opportunity to select from a really broad range of option modules - including those available through the University of London’s inter-collegiate sharing scheme. You’ll be eligible for free membership of the Institute of Historical Research in central London, offering an excellent library and nearly 70 regular research seminars, several convened by staff in the department.

The Goldsmiths campus is a buzzing place, and pretty much every day of term there are free talks, music recitals and exhibitions taking place - a fantastic way to ignite your imagination in all sorts of ways. Some recent history event highlights include an exhibition reimagining Windrush passenger landing cards, and a one-day ‘Queerama Storytelling’ workshop, bringing together filmmakers, archivists and historians to share methods for telling, collecting and communicating queer stories.

Career inspiration

Our graduates have gone on to pursue careers in media, local government, journalism, museums, charities, the arts and academia.

Find out more
gold.ac.uk/history



Masters students can take modules in other departments and at other University of London institutions, enabling you to tailor your studies.

Fees and funding
See pages 127-129

Taught programmes

MA Black British History

MA History

MA Queer History

Research programmes

MRes History

MPhil & PhD History

Check programme pages on our website for entry requirements; see pages 125-126 for more information

Journalism

Develop the practical skills and experience you'll need to work as a journalist at the highest level. You'll graduate with the hands-on multimedia experience to prepare you for a successful career in journalism, whatever your preferred platform.



"The programme combines traditional news and feature writing with modern digital techniques, including video production, data visualisation and coding: skills now most in demand in the industry. A strength of the Masters is the lecturers' knowledge of the industry and understanding of the importance of networking. I was encouraged to attend events and pursue internship opportunities that opened a lot of doors for me."

David
MA/MSc Digital Journalism

Key facts

Our programmes blend intensive workshop-based training in key practical skills such as news writing, video reporting, data and broadcast skills with lectures in subjects like media law and research techniques. We'll encourage you to become a critically aware, thinking journalist who sees your work in its wider social context.

You'll be taught by journalists with experience at the highest levels of the industry and in professional environments, which could include fully equipped newsrooms, radio and television studios, and editing suites. So you'll be learning the latest techniques, and receiving training that's relevant to today's workplaces.

You'll be working as a journalist from the moment you arrive. On several of our degrees you'll work on EastLondonLines.co.uk, our local live news website, which provides excellent training in news gathering and reporting on stories using words, images, and an array of digital tools.

Facilities

Newsrooms | Radio studio | Television studio | Editing suites

Career inspiration

Our alumni have gone on to work at major broadcasters such as the BBC and Bloomberg TV, on publications like the Guardian newspaper and Elle magazine, and at the cutting edge of digital content at Twitter and Vice.

Find out more
gold.ac.uk/media-communications



The department is a hub for debate and discussion about journalism and the wider media. We are home to the Centre for Investigative Journalism, and have many guest speakers and networking events throughout the year.

Accreditation



MA Journalism



MA Radio
MA Television Journalism

Fees and funding
See pages 127-129

Taught programmes

MA Journalism

MA Radio

MA Television Journalism

MA/MSc Digital Journalism

Check programme pages on our website for entry requirements; see pages 125-126 for more information

You may also be interested in

Media, culture and communications degrees, page 97

Law

Our forward-looking, cosmopolitan and distinctive Department of Law draws on, and has further strengthened, Goldsmiths' rich tradition of social awareness and engagement, and its ability to foster radical, critical, and creative thinking, facilitated by cross-disciplinary dialogue and collaboration.



“We strongly encourage prospective PhD candidates to take a close look at the expertise of our academic staff and email those whose research expertise they are interested in, to enquire about research supervision and discuss preliminary ideas.”

Dr Alex Dymock
Lecturer in Law

Key facts

We are now offering students the opportunity to undertake a research degree in this fascinating and important area. Goldsmiths Law PhD candidates will be given outstanding opportunities to explore modern legal phenomena in their rapidly changing socio-political, cultural, and economic contexts.

The PhD programme focusses on the opportunities and challenges that emerge from disruptive events (such as the expansive use of new technologies or the rising threat of climate change), new political priorities at domestic and transnational levels, and shifting global geo-politics. The programme also emphasises interdisciplinary perspectives.

We aspire for our PhD candidates to be central to Goldsmiths Law's innovative approach to legal studies and legal research. We believe there is space to carry out independent legal research while also engaging with others, and so you'll become part of a strong network of leading scholars and legal professionals.

Research in the department takes a strong interest in the use of artificial intelligence in the criminal justice system, and on the importance of technology in unearthing human rights violations. We also warmly welcome expressions of interest in immigration law, criminal law, criminal justice and human rights, international environmental law, and the UK's withdrawal from the EU (Brexit).

Find out more
gold.ac.uk/law



Graduates of the PhD programme will have lots of opportunities available to them. In addition to pursuing traditional career paths in academia and postdoctoral research, they will also be encouraged to consider future careers in the third sector, government organisations, or legal practice.

Fees and funding
See pages 127-129

Research programme

MPhil & PhD Law

Check programme pages on our website for entry requirements; see pages 125-126 for more information

Management

Become part of a powerful creative network of individuals from diverse backgrounds and all over the world. You'll develop the knowledge, skills and strategies you need to lead, innovate, and bring out the best in people.

"After working in the non-profit sector, I was looking to enhance my management skills through a business Masters that was also creative. This MSc offered the combination of excitement and practical tools I was looking for. The campus atmosphere is really friendly, and London is filled with cutting-edge cultural experiences."

Cami
MSc Management
of Innovation

Key facts

You'll study in the Institute of Management Studies (IMS), where you'll be guided by leading academics who are researchers and practitioners in areas ranging from work psychology to design, and from consumer behaviour to computing. This cross-sector approach will illuminate your studies and encourage you to make unexpected connections between subject areas.

Our degrees will develop your core skills in leadership, innovation, marketing, consumer behaviour, project management, coaching, research design, and organisational behaviour and change. We aim to provide you with the knowledge, understanding and skills not only to help you get the job that want, but to excel and develop in the career that inspires you.

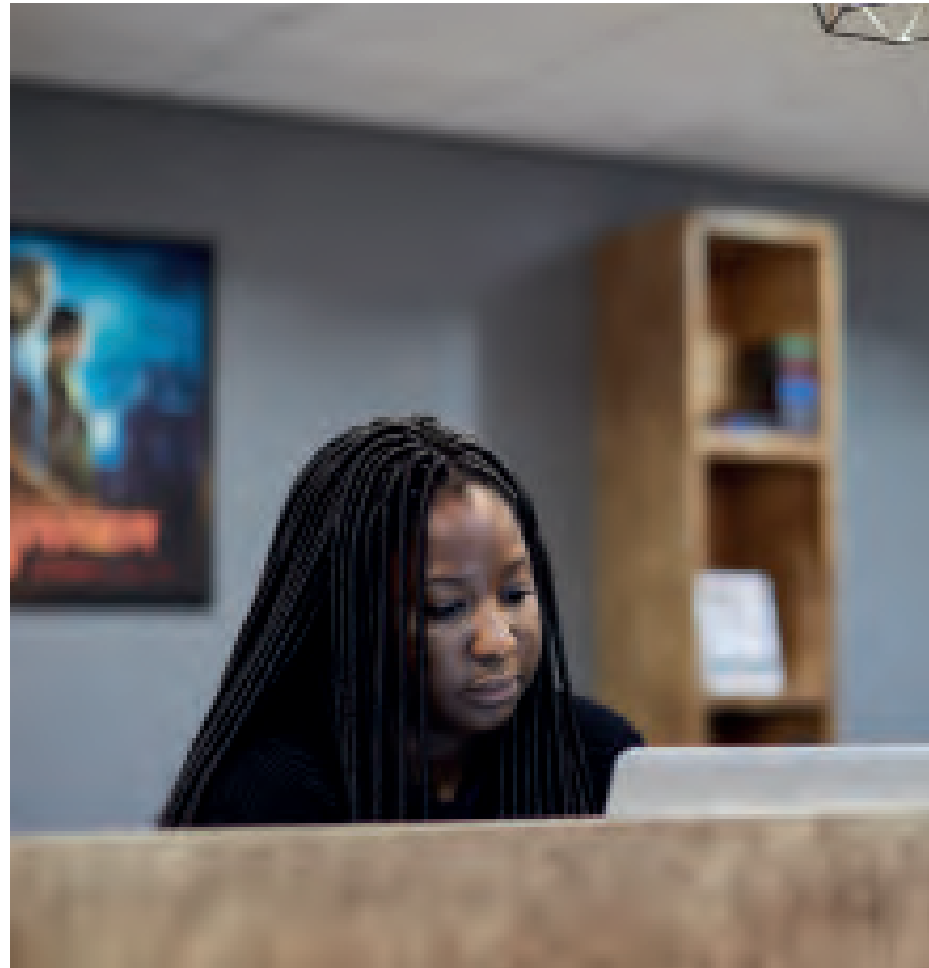
We regularly invite guest speakers from business and industry to the Institute. Recent highlights have included sessions on: hothousing for business and talent; leadership in the Royal Air Force; a consumer insight project with Converse UK; collaborative student projects with London's entrepreneurial community; and an 'idea marathon' explaining how we can unlock our creativity to develop a million ideas in our lifetime.

Career inspiration

Our graduates have gone on to work as change managers, company directors, consultants, researchers, marketers and strategists.

Find out more

gold.ac.uk/institute-management-studies



These programmes are firmly rooted in cutting-edge theory, research and practice.

Accreditation



The British
Psychological Society
Accredited

MSc Occupational
Psychology

Taught programmes

MSc Consumer Behaviour

MSc Management of Innovation

MSc Marketing & Technology

MSc Occupational Psychology

PGCert in Coaching

Research programmes

MPhil & PhD Management

MPhil & PhD Psychology (IMS)

Check programme pages on our website for entry requirements; see pages 125-126 for more information

You may also be interested in

MA Luxury Brand Management, page 79
Psychology degrees, page 103

Media, Communications & Cultural Studies

Whether you're producing or researching media, join a team of internationally renowned academics and practitioners who are innovating, shaping and defining the cutting edge of media and cultural practice, theory, politics, policy and aesthetics.



"I am proud to have earned a Masters from Goldsmiths. It equipped me with interdisciplinary thought and allowed me to network with talented people. This has broadened my horizons by preparing me to understand the world from various viewpoints. My experience at Goldsmiths has greatly enriched my life."

Keito
MA Film & Screen Studies

Fees and funding
See pages 127-129

Key facts

We'll encourage you to ask the hard questions about media, culture and communications in the 21st century. We are ranked first in the UK for our research intensity¹, and the department is a hub of debate and critique, regularly holding public events that can enrich your learning and connect you to the heart of conversations about the industry. Recent guests have included Angela Davis, Owen Jones and Gurinder Chadha, and events are held by our centres for feminist research, investigative journalism, global media democracy, and political economy to name just a few.

We provide a range of theory and practice MA programmes offering professional and critical training, and an extensive choice of option modules, in a community where you can develop as you move into professional life or further study.

If you're studying one of our practice-based Masters degrees you'll have access to industry-standard facilities in the purpose-built Professor Stuart Hall Building.

Facilities

Television studio | Radio studio | Photography studio | The latest digital video and audio editing equipment

Career inspiration

Our students and graduates regularly win prestigious national and international awards and prizes, and alumni have gone on to pursue careers in journalism, filmmaking, media production, programming, marketing, PR, human rights and research.



Find out more
[gold.ac.uk/
media-communications](http://gold.ac.uk/media-communications)

7TH
in the world for media
and communications
QS World University
Rankings by Subject 2020

Accreditation



MA Journalism



MA Radio
MA Television Journalism

Theory programmes

MA Brands, Communication & Culture

MA Cultural Studies

MA Culture Industry

MA Digital Media (with pathways in:
Theory; Theory & Practice [Image Making];
Theory & Practice [Critical Computing])

MA Film & Screen Studies

MA Global Media &
Transnational Communications

MA Media & Communications

MA Political Communications

MA Postcolonial Culture & Global Policy

MA Promotional Media: Public Relations,
Advertising & Marketing

MA Race, Media & Social Justice

Practice programmes

MA Children's Literature:
Children's Illustration

MA/MSc Digital Journalism

MA Filmmaking (with pathways in:
Cinematography; Directing Fiction; Editing;
Producing; Screen Documentary; Sound
Recording, Post-Production & Design)

MA Journalism

MA Photography: The Image & Electronic Arts

MA Radio

MA Script Writing

MA Television Journalism

Research programmes

MRes Media & Communications

MPhil & PhD Cultural Studies

MPhil & PhD Media & Communications

Check programme pages on our website for entry requirements; see pages 125-126 for more information

You may also be interested in
Journalism degrees, page 91
MA Gender, Media & Culture, page 107
MA Creative & Cultural Entrepreneurship, page 79

¹Research Excellence Framework 2014; based on research quality scores in the Times Higher Education subject rankings

Music

Maximise your creative and academic potential within a diverse and inclusive musical landscape, full of performance, composition and research opportunities, and a rich music events programme.

“There is never a dull moment as I am kept busy with the wide range of events and activities offered by the university, and my course challenges me in the best way possible and makes me excited about learning. Goldsmiths has such a warm sense of community, because of which I have had the opportunity to meet people from diverse backgrounds studying really interesting courses, and that has been a fascinating learning experience. There is also so much to do and see in London that you get inspired every day.”

Jaremdi
MA Music (Ethnomusicology)

Key facts

You'll be part of one of the largest postgraduate music communities in the UK, and you'll have the opportunity to connect with industry professionals as well as teaching staff who are leading international scholars, composers, sonic artists and performers.

Our MA Music and MMus programmes combine creativity with rigorous theoretical, historical and contextual studies. You'll be able to choose from an exciting variety of option modules, allowing you to tailor your programme to your unique interests.

Throughout the year, you can participate in a wide range of performance opportunities, including the Goldsmiths Sinfonia, Chamber Choir, Vocal Ensemble, Creative Jazz Ensemble, Contemporary Music Ensemble, lunchtime and evening recitals, and live events at the Students' Union. We also hold an annual PureGold summer music festival that showcases our students in South London venues, reflecting the diversity of their creativity, from opera through to improvisation and sonic installation.

Facilities

Goldsmiths Music Studios | Stanley Glasser Electronic Music Studio | Suites of practice rooms | Steinway Model D

Career inspiration

Many of our graduates have gone on to pursue careers in music - as performers, producers, composers, sound artists and engineers, journalists, and teachers. Others have found work in the wider creative and cultural sectors.



Find out more
gold.ac.uk/music

Taught programmes

MA Music (Contemporary Music Studies; Ethnomusicology; Musicology; Popular Music Research; General)

MMus (Composition; Creative Practice; Performance & Related Studies; Popular Music; Sonic Arts)

MA Arts Administration & Cultural Policy; Music Pathway

Check programme pages on our website for entry requirements; see pages 125-126 for more information

You may also be interested in

MA Creative & Cultural Entrepreneurship: Music Pathway, page 79



London is a cultural nexus. As a student here you'll be able to enjoy and participate in the city's thriving international music and arts scene.



Incorporated Society of Musicians (ISM) corporate member



Gold Academic Supporter of the British Academy of Songwriters, Composers and Authors (BASCA)

Research programmes

MPhil & PhD Music (Research; Composition; Performance Practice; Sonic Arts)

Politics & International Relations

At Goldsmiths we see politics as an interpretive lens through which to view a rapidly changing world: a world where art, culture and the everyday are as relevant as political institutions and governments, and where the Global South and issues of migration, memory and identity are just as important as the study of hegemonic powers.



“I loved the academic freedom that Goldsmiths offered, and the chance to explore topics related to my interests, and even topics that weren’t. And I absolutely loved London – it has an incredible energy and a do-it-yourself spirit that was incredibly inspiring for my writing and personal development.”

Tausif
Spiegel-Wilks Curatorial Fellow at the Institute of Contemporary Art, Philadelphia (MA Art & Politics)

Key facts

You’ll be taught by research-active academics who have internationally recognised expertise in postcolonial and international studies, gender and identity, human rights and transitional justice, political economy, political theory, culture, art theory and practice, and music. Politics at Goldsmiths is approached from a critical and comparative perspective, drawing on our expertise on Asia, the Middle East, Latin America, Africa and the ‘margins’ of Europe. In addition to these discursive and theoretical approaches, we also offer opportunities for students to work dialogically and experimentally, with practice-based methodologies, making the department a lively and richly interdisciplinary environment for postgraduate research.

Our unique taught Masters programmes traverse common disciplinary boundaries, inviting you to challenge and extend your conceptions of politics, and its traditional methods and practices. Research-based teaching at Masters level brings you into close dialogue with individual academics and cutting-edge approaches.

The department houses two internationally significant research centres - the Centre for Postcolonial Studies and the Political Economy Research Centre - as well as a new Research Unit in Contemporary Political Theory. Hosting various public events and visiting speakers’ series, they bring a variety of opportunities for postgraduate engagement in research and outreach activities.

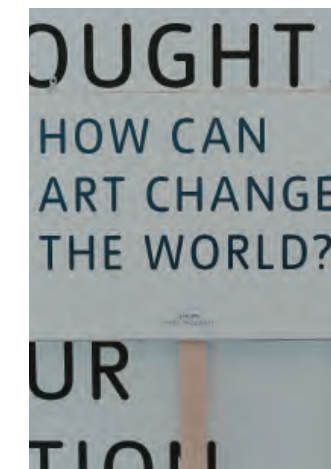
Find out more

gold.ac.uk/politics-and-international-relations



Voted one of the **UK’s TOP**

political universities by students
Which? University 2019



Career inspiration

Postgraduate politics students have come from, and progress into, fascinating careers. Whether they get a job in the civil service, set up their own charity or work for a think tank, many of our students have gone on to influence or implement policy. Beyond more traditional politics careers, our alumni work as curators, directors, artists, musicians, performers and activists. Others choose to continue their studies to doctoral level.

Fees and funding

See pages 127-129

Taught programmes

MA Art & Politics

MA Global Political Economy

MA International Relations

MA Politics, Development & the Global South

Research programmes

MPhil & PhD Politics

Check programme pages on our website for entry requirements; see pages 125-126 for more information

Psychology

Study in an internationally respected psychology department, with access to dedicated staff with diverse research and teaching strengths, and cutting-edge facilities including EEG, eye-tracking, brain stimulation labs, and the Goldsmiths infant lab.



“Goldsmiths was a great place to study, with an exciting social element. The diverse range of people I met made it a very interesting experience. The university staff were very supportive of my aspirations and without them it is unlikely I would be in my current position.”

Isaac
Trainee Clinical Psychologist
(MSc Cognitive & Clinical Neuroscience)

Key facts

From day one of your degree, you'll be taught by experts in their fields, and trained on how to design and conduct research addressing real-world issues. All programmes have a strong research focus, and you'll have the opportunity to get involved in our original research projects.

Staff have particular research strengths in cognition and neuroscience, developmental and educational science, clinical and forensic science (including individual differences), the science of creative and performing arts, and social processes. You'll be encouraged to connect these subjects to the world around you: from how magic can help us understand the brain, to sleep research and bullying in schools.

You'll be able to make the most of the rich intellectual community in the department by attending our public lecture series - recent topics have included the nature of the conscious mind, and the social psychology of scapegoating behaviour.

Facilities

Behavioural and psychophysical testing facilities | Patient testing rooms | Infant lab | Motion tracking | Labs for brain stimulation and high-density electroencephalography (EEG)

Career inspiration

Graduates of these programmes will be well equipped for a wide range of careers in the healthcare services, NHS management, the criminal justice system, consultancy, advertising, and research. Alumni also go on to undertake clinical doctorates and PhD programmes.



Find out more
gold.ac.uk/psychology



We have well-established research links with other academic institutions, and with a range of organisations such as hospitals, schools, charities and businesses.

Accreditation



The British Psychological Society
Accredited

MSc Forensic Psychology

Fees and funding

See pages 127-129

Taught programmes

MSc Cognitive & Clinical Neuroscience

MSc Forensic Psychology

MSc Foundations in Clinical Psychology & Health Services

MSc Music, Mind & Brain

MSc Psychology of the Arts, Neuroaesthetics & Creativity

Check programme pages on our website for entry requirements; see pages 125-126 for more information

You may also be interested in

MSc Computational Cognitive Neuroscience, page 77

MSc Occupational Psychology, page 95

Research programmes

MRes Research Methods in Psychology

MPhil & PhD Psychology

Social Work

Develop the knowledge, values and skillset you need to practise as a reflective and ethical social worker. If you're already working in a related area, our programmes will enable you to extend and enhance your existing competencies.

"I chose to study social work at Goldsmiths because it is inclusive and community-facing, and felt like the right place to form my identity as a social worker. I have been supported by principled staff that value head and heart equally, and who work for the collective good of teachers and researchers, students, and the individuals we support as social workers. When I graduate I hope to keep learning from and working with all sorts of people, which is a privilege that Goldsmiths has taught me to appreciate."

Eve
MA Social Work

Key facts

Our programmes recognise the unique contribution that each student's qualities and life experiences bring to the learning environment, and focus on encouraging you to explore your values and knowledge base, and embed this in your social work practice.

Teaching is characterised by a strong commitment to social justice and anti-oppressive principles, and we'll ask you to explore the tensions, ambiguities and uncertainties that exist in social work. This will develop your critical thinking skills, and prompt you to connect theory with practice.

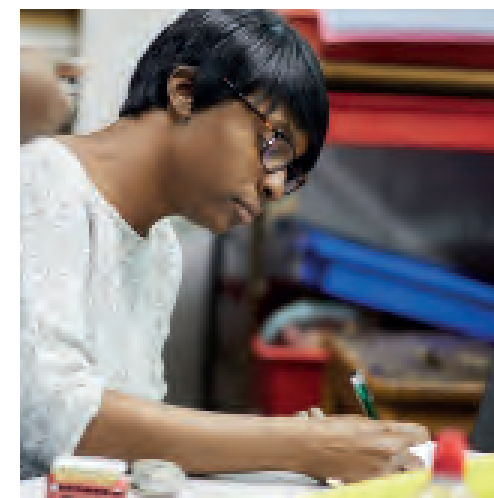
The close connections we have with employer stakeholder partners means that you'll have the opportunity to develop the skills that will be useful in your future career in placement settings.

Career inspiration

Nine out of 10 of our MA Social Work students progress to graduate-level employment when they finish their studies[†]. This is testament to the excellent training you'll receive and the great reputation Goldsmiths graduates have with employers. Former students have gone on to work in local authority adult services and children's departments, and independent and voluntary sector agencies such as the NSPCC, Family Action and MIND.

Find out more

gold.ac.uk/social-work



Accreditation

hcpc health & care
professions
council

MA Social Work

Taught programmes

MA Social Work

MA/PGDip/PGCert Professional Leadership
for Social Work

MA-level Social Work CPD (Continuing
Professional Development) modules

Check programme pages on our website for entry requirements;
see pages 125-126 for more information

You may also be interested in

[MA Understanding Domestic Violence
& Sexual Abuse](#), page 111

Research programmes

MPhil & PhD Social Work

[†]Destinations of Leavers from Higher Education (DLHE) 2016/17 (based on postgraduate taught student respondents surveyed six months after graduation); please note this is the latest available data

Sociology

Join one of the most innovative sociology departments in the country. Everyone here is engaged with important and exciting investigations into the dynamics of the contemporary world, and you'll get to work alongside a lively mix of students from around the globe - with different histories, experiences, and expertise.

"The MSc introduced me to a particular kind of sociology that is so alive here at Goldsmiths. What is more, it allowed me to get stuck in and try it for myself. It has shaped how I design and think about research, and ultimately set me off on a much longer intellectual journey. Highly recommended!"

Zoe
MSc Social Research

Key facts

Study in a department that pioneers 'live' sociology, connecting you to contemporary social issues like human rights, globalisation, financial economy, class and the super-rich, urban life and the inner city, and new media.

You'll be in conversation with academics who are experts in their fields, published authors and media commentators. World-class research informs teaching, bringing you close to cutting-edge developments in sociological thinking. In a nutshell, you'll be part of a department that's a central hub for intellectual debate.

Research in the department is focused around six clusters: world cities, economies and social exclusion; race, religion and nationalism; culture and social theory; gender and social life; politics, rights and globalisation; life sciences, medicine, technology and health.

Career inspiration

Recent graduates have embarked on careers in social research, think tanks, the arts and cultural sectors, human rights, NGOs, and in government and public administration. They have also progressed to PhD study.

Find out more

gold.ac.uk/sociology



We're passionate about training the next generation of social researchers.

Taught programmes

MA Brands, Communication & Culture

MA Cities & Society

MA Critical & Creative Analysis

MA Ecology, Culture & Society

MA Gender, Media & Culture

MA Human Rights, Culture & Social Justice

MA Photography & Urban Cultures

MA Race, Media & Social Justice

MSc Social Research

MA Visual Sociology

Research programmes

MPhil & PhD Sociology

MPhil & PhD Visual Sociology

Check programme pages on our website for entry requirements; see pages 125-126 for more information.

You may also be interested in
MA Queer History, page 89

Fees and funding
See pages 127-129

Theatre & Performance

From investigating artefacts, texts and theatre forms to performance studies, you'll take an interdisciplinary and intercultural approach to studying contemporary and historical theatres, and undertaking creative critical research practices.

“The MA grounded my practice in designing and delivering participatory arts projects, working with different community groups in a range of settings. My time at Goldsmiths laid the foundations for an ongoing learning process that continues as I develop as a practitioner. The peer network I formed has also led to invaluable employment opportunities with a range of organisations.”

Pooja

MA Applied Theatre: Drama in Educational, Community & Social Contexts

Key facts

You'll join a forward-thinking and open-minded environment where you can choose between programmes that are shaped by internationally recognised staff research expertise in theatre and performance cultures from Europe, Africa, Asia and the USA. Specialisms cover: critical and post-colonial theories, performance theory, theatre history, world theatres, political activism and applied theatres, physical theatres, new writing, multimedia, live art and dance.

You'll have the opportunity to work with professionals who know how theatre can transform lives and effect social change, and you'll be supported to find your own intellectual, critical and/or creative voice.

It's a lively department, with frequent events, performances and distinguished guest speakers. This helps create a community of students, staff and graduates who are connected to contemporary debates, and who want to make their own mark on today's culture.

Facilities

Newly refurbished facilities including: 140-seat theatre (see image top left) | Five performance studios | Scenic workshops | Sound studio | Open-access media lab

Career inspiration

Recent graduates are now working as performers, directors, writers, producers, technicians, project leaders, teachers, researchers and academics. They're working at organisations including the National Theatre, LIFT, Tamasha Theatre Company, Create Ireland, Theatre Royal Plymouth, and in the West End.



Close to central London, we're part of one of the most dynamic creative scenes in the world.

Find out more
gold.ac.uk/theatre-performance

Taught programmes

MA Applied Theatre: Drama in Educational, Community & Social Contexts

MA Dramaturgy & Writing for Performance

MA Musical Theatre

MA Performance & Culture: Interdisciplinary Perspectives

MA Performance Making

MA World Theatres

Research programmes

MPhil & PhD Drama

Check programme pages on our website for entry requirements; see pages 125-126 for more information

You may also be interested in

MA Creative & Cultural Entrepreneurship:
Theatre & Performance Pathway, page 79
PGCE (Secondary): Drama, page 85

Therapeutic Studies

Goldsmiths has a long-established reputation for the provision of training in a wide range of therapies, including counselling, art and dance therapy, and cognitive behavioural therapy. It's the ideal place for anyone who's passionate about these disciplines, and who wants to develop their skills, knowledge and therapeutic values.



“The MA structure and the variety of staff and knowledge ensured a strong foundation in networking across the profession and understanding the value of research, continual development and growth. It’s incredible how one course and class can reach across the globe in such a wonderful way.”

Kimberly
MA Dance Movement
Psychotherapy

Key facts

You'll explore the development of contemporary therapeutic disciplines and practices in their cultural, historical and social contexts, and consider therapeutic studies in relation to questions of identity and difference, and equality and diversity.

You will learn in experiential and innovative ways, and will be encouraged to reflect on your own values and experience in your practice. Creative thinking forms a large part of our programmes, and you'll explore fresh approaches to what you learn and practice - often inspired by other disciplines.

The lecturers, seminar leaders and tutors on our programmes are practising counsellors and therapists, and have experience working in the public and private sectors, so you can be sure that theory will be enhanced by practical insight. This will enable you to take what you learn in the classroom to the outside world, and make a real difference to individuals and communities.

Career inspiration

We have a well-established reputation for nurturing high quality therapists and practitioners. Graduates have gone on to practise as therapists and counsellors in the NHS, social services, and in the education sector. Others pursue careers in support and welfare work, and advocacy and mentoring.

Find out more

gold.ac.uk/therapies



Supervised placements and internships are a key part of our professional Masters programmes.



Accreditation



MA Art
Psychotherapy



MA Dance Movement
Psychotherapy

Taught programmes

Graduate Certificate in Humanistic & Psychodynamic Counselling

MA Art Psychotherapy

MSc/PGDip Cognitive Behavioural Therapy (CBT)

MA Counselling

MA Dance Movement Psychotherapy

MA Understanding Domestic Violence & Sexual Abuse
(Distance Learning mode also available)

MA-level Understanding Domestic Violence & Sexual Abuse CPD (Continuing Professional Development) modules

Check programme pages on our website for entry requirements; see pages 125-126 for more information

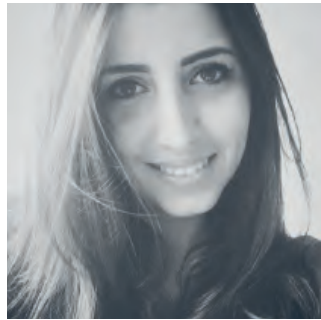
Research programmes

MPhil & PhD Art Psychotherapy

MPhil & PhD Counselling & Psychotherapy

Visual Cultures

Explore new forms of research practice and engage with the latest theoretical ideas within contemporary art, the curatorial and architecture in a culturally diverse and intellectually challenging environment. You'll look at these areas within a global context, and consider the ways in which they address urgent social, cultural and political conditions.



“My year on the degree was one of pure exploration, which has advanced my understanding of the world I engage with on so many levels; it was a journey into my own interests (which I lost and found several times throughout the year). The MA is flexible rather than specific in many ways, but it teaches you how to plan a methodology, design a narrative, and construct an argument that responds to the most urgent and critical topics of our time.”

Hania
MA Research Architecture

Key facts

We're one of the few university departments in the world to have developed programmes that explore contemporary art and culture beyond the disciplinary parameters of traditional art history. So you'll consider visual culture within a framework of critical theory, philosophy and cultural studies, including issues of cultural difference, race, performativity, visual display, aurality, and encounters with diverse audiences.

We'll encourage you to explore and innovate. You'll develop independence of thought by discovering, evaluating, and making use of a wide range of historical, theoretical, creative and often collaborative approaches to research and writing.

All of our academic staff are research active, and their teaching draws on contemporary debates around visual cultural approaches to art and globalisation, performance studies, queer studies, the environmental humanities, the curatorial, architecture and spatial practice, and art's relationship to sound and popular music.

Career inspiration

Our former students have taken up a wide variety of creative and professional roles within contemporary art and culture across the world. Many alumni have set up their own enterprises and cultural initiatives.

Find out more

gold.ac.uk/visual-cultures



Fees and funding

See pages 127-129



Students in London are well placed to take advantage of the many galleries, art spaces, museums, cultural facilities and specialist libraries in the capital - including Goldsmiths Centre for Contemporary Art (CCA), our public gallery on campus (see page 28).

Taught programmes

Graduate Diploma in Contemporary Art History

MA Contemporary Art Theory

MA Research Architecture

Research programmes

MRes Advanced Practices

MRes Visual Cultures

MPhil & PhD Advanced Practices

MPhil & PhD Research Architecture

MPhil & PhD Visual Culture

Check programme pages on our website for entry requirements; see pages 125-126 for more information

SPECIALIST PROGRAMMES FOR INTERNATIONAL STUDENTS

We offer a range of preparation programmes for international students - whether you want to improve your English language skills or develop your UK academic study skills before you start a postgraduate degree.

Pre-sessional English language programmes (5-12 weeks)



“The Pre-sessional course helped me to be more capable, in terms of not only English language but also helping me to get used to the different education system and cultural background. The course setting is unique, just like Goldsmiths itself. Instead of only focusing on improving English ability, it also covers more about culture and art. I am enjoying the environment at Goldsmiths, the relationship between students and tutors is very friendly and respectful.”

Jiaxuan
Pre-sessional English Language

Improve your English language and academic skills before you begin your degree. These programmes are for international students who have a place on a degree at Goldsmiths who want or need to improve their English language skills before they begin.

Programmes last between 5 and 12 weeks, and start from June each year, preparing you for studies beginning in the autumn.

There is also a Pre-sessional Plus programme that is open to applicants who have an unconditional offer to study at Goldsmiths. The dates and fees for this programme are the same as for the 5-week course (see table, right).

Accommodation

We have rooms available in our halls of residence for the duration of the Pre-sessional courses. Find out more about what is available at gold.ac.uk/accommodation/pre-sessional

English language requirements

The English language requirements for our Pre-sessional programmes range from an equivalent of IELTS 4.5 to 6.5; please check the table on the right to find the correct course for you.

You will need to take a UK Visas and Immigration (UKVI) IELTS test for all of the Pre-sessional programmes. The English language requirements are based on our current UKVI visa regulations. The visa rules may change before you start your studies with us, so for the latest information or if you have any questions always contact our Immigration Advisory Service (immigration@gold.ac.uk).

How to apply

You apply for these courses directly through the Goldsmiths website.

Find out more

gold.ac.uk/preparation/pre-sessional-english-language

Length and dates	Entry requirements	Fees for 2020-21												
12 weeks full-time 14 June to 3 September 2021	You can join the 12-week programme if your current overall UKVI IELTS score is 1.0 below the requirement for the degree you're joining (unless the requirement is 5.0). The table below indicates what this will be.	£4,330**												
	<table border="1"> <thead> <tr> <th>Degree entry requirement*</th> <th>Entry requirement for the 12-week programme</th> </tr> </thead> <tbody> <tr> <td>7.0</td> <td>6.0 (with no individual score lower than 4.5)</td> </tr> <tr> <td>6.5</td> <td>5.5 (with no individual score lower than 4.5)</td> </tr> <tr> <td>6.0</td> <td>5.0 (with no individual score lower than 4.5)</td> </tr> <tr> <td>5.5</td> <td>4.5 (with no individual score lower than 4.5)</td> </tr> <tr> <td>5.0</td> <td>4.5 (with no individual score lower than 4.5)</td> </tr> </tbody> </table>		Degree entry requirement*	Entry requirement for the 12-week programme	7.0	6.0 (with no individual score lower than 4.5)	6.5	5.5 (with no individual score lower than 4.5)	6.0	5.0 (with no individual score lower than 4.5)	5.5	4.5 (with no individual score lower than 4.5)	5.0	4.5 (with no individual score lower than 4.5)
	Degree entry requirement*		Entry requirement for the 12-week programme											
	7.0		6.0 (with no individual score lower than 4.5)											
	6.5		5.5 (with no individual score lower than 4.5)											
	6.0		5.0 (with no individual score lower than 4.5)											
5.5	4.5 (with no individual score lower than 4.5)													
5.0	4.5 (with no individual score lower than 4.5)													
9 weeks full-time 5 July to 3 September 2021	You can join the 9-week programme if your current overall UKVI IELTS score is 0.5 below the requirement for the degree you're joining. The table below indicates what this will be.	£3,600**												
	<table border="1"> <thead> <tr> <th>Degree entry requirement*</th> <th>Entry requirement for the 9-week programme</th> </tr> </thead> <tbody> <tr> <td>7.0</td> <td>6.5 (with no individual score lower than 5.0)</td> </tr> <tr> <td>6.5</td> <td>6.0 (with no individual score lower than 5.0)</td> </tr> <tr> <td>6.0</td> <td>5.5 (with no individual score lower than 5.0)</td> </tr> </tbody> </table>		Degree entry requirement*	Entry requirement for the 9-week programme	7.0	6.5 (with no individual score lower than 5.0)	6.5	6.0 (with no individual score lower than 5.0)	6.0	5.5 (with no individual score lower than 5.0)				
	Degree entry requirement*		Entry requirement for the 9-week programme											
	7.0		6.5 (with no individual score lower than 5.0)											
6.5	6.0 (with no individual score lower than 5.0)													
6.0	5.5 (with no individual score lower than 5.0)													
5 weeks full-time 2 August to 3 September 2021	You can join the 5-week programme if your current overall UKVI IELTS score is 0.5 below the requirement for the degree you're joining. There is also a minimum writing skill score requirement. The table below indicates what this will be.	£2,195**												
	<table border="1"> <thead> <tr> <th>Degree entry requirement*</th> <th>Entry requirement for the 5-week programme</th> </tr> </thead> <tbody> <tr> <td>7.0</td> <td>6.5 (with a minimum of 6.5 in writing and no individual score lower than 5.5)</td> </tr> <tr> <td>6.5</td> <td>6.0 (with a minimum of 6.0 in writing and no individual score lower than 5.5)</td> </tr> <tr> <td>6.0</td> <td>5.5 (with no individual score lower than 5.5)</td> </tr> </tbody> </table>		Degree entry requirement*	Entry requirement for the 5-week programme	7.0	6.5 (with a minimum of 6.5 in writing and no individual score lower than 5.5)	6.5	6.0 (with a minimum of 6.0 in writing and no individual score lower than 5.5)	6.0	5.5 (with no individual score lower than 5.5)				
	Degree entry requirement*		Entry requirement for the 5-week programme											
	7.0		6.5 (with a minimum of 6.5 in writing and no individual score lower than 5.5)											
6.5	6.0 (with a minimum of 6.0 in writing and no individual score lower than 5.5)													
6.0	5.5 (with no individual score lower than 5.5)													

*Check your degree entry requirements at gold.ac.uk/course-finder

**We ask for a £300 deposit when you accept your offer of a place.

This amount is then deducted from your tuition fee when you begin the programme

Pre-Masters Pathways (1 year)

Our Pre-Masters Pathway programmes will prepare you for your future postgraduate study in the UK, or act as a conversion course if you've studied one subject at undergraduate level but want to change focus at postgraduate level. They're designed specially for international and EU students.

Creative & Cultural Industries

Design

Media, Culture & Social Sciences

Music

Specialise in a subject that interests you

You can focus on a range of subjects - see pages 120-121 for further details about each of the programmes.

Improve your study skills and academic English

You will also improve your study skills and use of academic English - the essential skills you will need to successfully study a Masters degree.

Progression to our degrees

On completion of the programme, you will be awarded a Graduate Diploma or Pre-Masters Certificate and will be guaranteed a place on a relevant Goldsmiths Masters if you obtain an overall score of 50% or more. Some progression routes are subject to an interview - see pages 120-121 for details.

Find out more
gold.ac.uk/preparation



UKVI IELTS

5.5

(with no individual component lower than 5.5) accepted

GUARANTEED OFFER OF ACCOMMODATION*

with dedicated security and support staff

PERSONAL TUTOR

PROGRESSION

onto a relevant Goldsmiths Masters degree with a pass mark of 50% or more

*Subject to meeting deadlines

Media, Culture & Social Sciences

Creative & Cultural Industries

Compulsory modules:

- Academic Writing and Language Development
 - Academic Listening and Speaking
 - Contemporary Theories
 - Images and Their Interpretations

Additional modules:

- | | |
|--|---|
| <ul style="list-style-type: none"> • Issues Around Modern Knowledge, Modern Power • Issues Around Media and Technologies | <ul style="list-style-type: none"> • Introduction to Creative and Cultural Industries • Introduction to Arts Administration and Cultural Policy |
|--|---|

If you pass at the required level you can progress onto these degrees:

- | | |
|---|--|
| <ul style="list-style-type: none"> • MA Anthropology & Cultural Politics • MA Applied Anthropology & Community & Youth Work • MA Applied Anthropology & Community Development • MA Applied Theatre: Drama in Educational, Community & Social Contexts • MA Art & Politics • MA Cities & Society • MA Contemporary Art Theory • MA Critical & Creative Analysis • MA Education: Culture, Language & Identity • MA Film & Screen Studies • MA Gender, Media & Culture • MA Human Rights, Culture & Social Justice • MA International Relations • MA Media & Communications • MA Multilingualism, Linguistics & Education • MA Performance & Culture: Interdisciplinary Perspectives • MA Performance Making • MA Political Communications • MA Postcolonial Culture & Global Policy • MA Promotional Media: Public Relations, Advertising & Marketing • MA Social Anthropology • MSc Social Research • MA Sociocultural Linguistics • MA Understanding Domestic Violence & Sexual Abuse • MA Visual Anthropology • MA Visual Sociology • MA World Theatres | <ul style="list-style-type: none"> • MA Arts Administration & Cultural Policy • MA Arts Administration & Cultural Policy: Music Pathway • MA Creative & Cultural Entrepreneurship • MA Cultural Policy, Relations & Diplomacy • MA Cultural Studies • MA Culture Industry • MA Luxury Brand Management • MA Social Entrepreneurship • MA Tourism & Cultural Policy <p>Admission to these programmes is subject to interview</p> |
|---|--|

Music

Design

Compulsory modules:

- | | |
|---|--|
| <ul style="list-style-type: none"> • Academic Writing and Language Development • Academic Listening and Speaking • Contemporary Theories • Images and Their Interpretations | <ul style="list-style-type: none"> • Academic Writing and Language Development • Academic Listening and Speaking • Introduction to Design Studio Practice |
|---|--|

Options such as:

- Research Essay
- Advanced Classical Performance
- Soviet Music and Beyond
- Narrative, Representation and Popular Song
- Minimalism and Postminimalism
- Advanced Topics in History: Mozart's Operas
- Improvisation

- Studio Project: Application of Methods and Processes
- Pathway Design Project

If you pass at the required level you can progress onto these degrees:

- | | |
|---|--|
| <ul style="list-style-type: none"> • MA Music (Contemporary Music Studies) • MA Music (Ethnomusicology) • MA Music (Musicology) • MA Musical Theatre • MMus Composition • MMus Creative Practice • MMus Performance & Related Studies • MMus Popular Music • MMus Sonic Arts | <ul style="list-style-type: none"> • MA Design: Expanded Practice |
|---|--|

Admission to the MA programmes is subject to interview

[Find out more
gold.ac.uk/preparation](https://www.gold.ac.uk/preparation)

Fees per year (2020-21)*	£14,030 (Media, Culture & Social Sciences; Creative & Cultural Industries) £14,880 (Music; Design)
Length	1 year full-time
Minimum IELTS entry requirements	UKVI IELTS 5.5 (with no individual component lower than 5.5)

*Fees for 2021 haven't yet been set, so as a guide we've listed the 2020 fees. They are subject to annual review and are likely to increase by approximately 3-5% each year. Please check our website for the latest information.

Graduate Diploma in Art

This programme is aimed at students who are considering a Masters in the Department of Art, but who need a year to develop their artistic practice, as well as their critical and academic English language skills.



The Graduate Diploma in Art is a unique programme that will integrate you into the studio-based postgraduate community in the Department of Art.

You will develop your English language skills, including academic writing, listening and speaking. You will also attend lectures and seminars in critical studies, and will undertake self-directed practice-based study. In doing so you will develop an understanding of your own work, and also the artistic, academic and political context in which it exists.

If you successfully complete the Graduate Diploma (by passing all elements and achieving an average mark of 50% or above overall) you will be guaranteed entry onto one of the following Masters programmes in the Department of Art:

- MFA Fine Art (page 71)
- MFA Curating (page 81)
- MA Artists' Film & Moving Image (page 71)
- MA Art & Ecology (page 71)

Find out more
gold.ac.uk/preparation/diploma-art



IELTS
6.0

(with a 6.0 in writing and no individual component lower than 5.5) accepted

GUARANTEED OFFER OF ACCOMMODATION*

with dedicated security and support staff

PERSONAL TUTOR

PROGRESSION

onto a relevant Goldsmiths Masters degree on successful completion of the programme

*Subject to meeting deadlines

Fees per year (2020-21)*	£23,300
Length	1 year full-time
Minimum IELTS entry requirements	IELTS 6.0 (with a 6.0 in writing and no individual component lower than 5.5)
Additional requirements	Electronic portfolio; interview

*Fees for 2021 haven't yet been set, so as a guide we've listed the 2020 fees. They are subject to annual review and are likely to increase by approximately 3-5% each year. Please check our website for the latest information.

How to apply

For the majority of our postgraduate programmes you apply directly to Goldsmiths using our online application system. Just visit the programme page of the course you're interested in on our website, where there'll be more information about the steps you need to go through.

The exceptions are:

- PGCE programmes: you apply through UCAS Teacher Training
- MA Social Work: you apply through UCAS

If you're applying through UCAS, you'll need the following information:

- Institution code - G56
- Institution name - GOLD
- UCAS code - this differs by programme; you can find this information on each degree page of our website

Part-time degrees are open to students from the UK and EU.

When to apply

We accept applications from October 2020 for students wanting to start in September 2021.

Some of our programmes have application deadlines, and if you're applying for funding (see pages 128-129) you may need to apply by certain dates. Bear this in mind so that you've got enough time to complete your application.

Selection process

After you've submitted your application it will be reviewed by our staff. You may also be invited to an interview (either in person or virtually). Once your application and qualifications have been considered, we'll let you know whether you'll be offered a place.

MPhil and PhD programmes

If you're applying for an MPhil/PhD you should get in touch with the programme contact or academic department in which you'd like to study before you submit your application. It may also be possible to arrange an advisory meeting with your preferred supervisor. As part of your application you'll need to write a research proposal. This should:

- Persuade the reader that you have an interesting project in mind, that you have original ideas, and that you have the skills and understanding required to achieve your plans
- State your case clearly and accessibly
- Be realistic in terms of what you expect to achieve with your research
- Explain how your research will fit within the scholarly community that you're applying to be a part of, and make connections with the supervisor you'd like to work with

Read our advice for writing a research proposal at gold.ac.uk/pg/apply/research-proposal

Find out more

gold.ac.uk/pg/apply

Entry requirements

Our minimum entry requirements are outlined below. For entry to some Masters degrees you will need higher grades, or you might be asked to meet further requirements, such as providing a portfolio, or completing work experience or 'fitness to train' criteria. You might also be considered for some programmes if you aren't a graduate, but have relevant experience and can show that you have the ability to work at postgraduate level. You should check online programme pages for the most up-to-date entry requirements.

Minimum entry requirements

Masters degrees, Postgraduate Diplomas and Postgraduate Certificates

You should normally have (or expect to be awarded) an undergraduate degree of at least second class standard in a relevant subject.

MRes programmes

You should normally have (or expect to be awarded) an undergraduate degree of at least upper second class standard in a relevant subject.

MPhil/PhD programmes

You should normally have (or expect to be awarded) a taught Masters in a relevant subject.

Specialist programmes for international students

See pages 114-123.

International qualifications

We accept a wide range of international qualifications in addition to the ones listed here. You can find out more about the qualifications we accept from around the world at gold.ac.uk/international/regions

English language requirements

If English isn't your first language, you'll need to meet our English language requirements to study with us. We accept a wide range of proficiency qualifications (see page 126) but prefer IELTS.

Degree programmes

As a guide, you need a minimum score of 6.5 in IELTS (with a minimum of 6.5 in the written test) to study our degree programmes. However, some of our programmes require a higher IELTS score. This will be stated on online programme pages.

You'll need to show us your original English language test score certificate at enrolment, and electronic copies before you arrive. Your certificate must be issued within two years of your course start date.

Specialist programmes for international students

If you don't yet meet the English language requirements to study a postgraduate degree, or if you'd like to take a course that prepares you for higher level study in the UK, we offer a range of specialist programmes for international students. You can find out more on pages 114-123.

Get in touch

If you have any questions before you apply you can email our Enquiries team, or chat to us online: course-info@gold.ac.uk gold.ac.uk/contact

If you have any questions after you've applied you can email our Admissions team: admissions@gold.ac.uk

You can also call +44 (0)20 7078 5300.

In addition to IELTS we accept a wide range of qualifications as proof of English language capability for study at degree level or above.

The table below outlines just some of the qualifications we currently accept, and the result that's equivalent to IELTS 6.5 (please check online prospectus entries to see what IELTS score is listed for the degree you're interested in). Please note that this list is under regular review in response to Covid-19, and the most up-to-date information will always be available at gold.ac.uk/apply/english-language-requirements - this is also where you can check the validity period for each qualification, and the results you'll need equivalent to other IELTS scores.

If your qualification isn't listed, or if you have any queries, please contact admissions@gold.ac.uk

Qualification	Result equivalent to IELTS 6.5
A-level in English from a UK awarding body	Grade C
Cambridge C1 Advanced	176 overall with 169 in all skills
Cambridge C2 Proficiency	176 overall with 169 in all skills
Degree taken in English	Completion
English Foundation programme from various providers (please check our website for details)	Dependent on programme taken
GCSE/O-level in English from a UK awarding body	Grade C/Grade 4
Hong Kong Examinations and Assessments Authority	Grade 4
Indian Standard X/Indian Standard XII	75% in both exams
International Baccalaureate (taught in English)	Successful completion at 28+ points
International Baccalaureate English Language A: Literature/International Baccalaureate English Language A: Language & Literature	At Higher Level 4 or Standard Level 5
International Baccalaureate English Language B	At Higher Level 4 or Standard Level 6
Malaysian 1119 English module	Grade B
Norwegian Vitnemal in English	Grade 4
PTE Academic	62 overall, with no less than 60 in any component
Singapore Integrated Programme (IP) in Language Arts	Grade C
Singapore O/A Level	Grade C
TOEFL	90 overall with 23 in writing and 21 in each other skill
Trinity College London Integrated Skills in English	ISEIII (pass in all components)
2 Advanced Placements	Grades 33

Fees

Home students

We publish the tuition fees for 2021 entry in autumn 2020, and you can check degree pages on our website for the latest information. As a guide, we've listed the 2020 entry fees below. These show the typical ranges of tuition fees for full-time students. They are quoted per year and are subject to annual review; please note that they were correct at the time of printing but may be subject to change.

MA, MFA & MSc programmes: £7,030 - £13,330
MMus programmes: £8,040 - £10,450
PGCE programmes: £9,250
MRes programmes: £7,030 - £8,040
MPhil/PhD programmes: £4,407

EU students

Unfortunately at the time of printing we do not have full information about how the UK's withdrawal from the European Union ('Brexit') will affect EU students applying to study in the UK for 2021 entry.

For 2020 entry, EU fees were fixed at the Home fee rate (please see above for details).

We would encourage you to visit our website for the latest information: gold.ac.uk/eu

The vast majority of London boroughs voted in favour of remaining in the EU, and the city remains incredibly multicultural and inclusive. Goldsmiths has a large community of students from around the world, with around 10% coming from EU countries. This creates a welcoming, cosmopolitan environment, and we cherish the diversity of perspectives and backgrounds that all Goldsmiths students bring to their university experience. You can see the numbers of students we have from around the world at gold.ac.uk/international/regions

International students

We publish the tuition fees for 2021 entry in autumn 2020, and you can check degree pages on our website for the latest information. As a guide, we've listed the 2020 entry fees below. These show the typical ranges of tuition fees for full-time students. They are quoted per year and are subject to annual review; please note that they were correct at the time of printing but may be subject to change.

Specialist programmes for international students: See pages 114-123
MA, MFA & MSc programmes: £14,760 - £23,200
MMus programmes: £14,760 - £18,900
PGCE programmes: £16,700
MRes programmes: £14,760 - £18,900
MPhil/PhD programmes: £14,760 - £18,900

Advanced fee payments

All self-financed* students who are 'international' for the purposes of tuition fees are asked to pay an advanced payment of tuition fees of £3,000 (or £300 for Pre-sessional programmes, page 117) as soon as possible after receiving an unconditional offer. This money is deducted from your total fee liability for the academic year, and, if you do require a Tier 4 visa, we will list the payment on your Confirmation of Acceptance of Studies (CAS) statement. We can't issue a CAS without the payment, unless you meet one of the exemptions set out online. You can find out more about the advanced payment of fees at gold.ac.uk/immigration/before-you-arrive/other-information

*Self-financing is the description given to any student without a UK Visas and Immigration (UKVI) defined 'official sponsor'. Official sponsors include any university, government, international organisation or company. Full details will be sent if you are offered a place at Goldsmiths.

Paying your fees

Tuition fees are due at or before enrolment. Find out more at gold.ac.uk/student-services/tuition-fees

The UK government has different classifications for a student's fee status. If you're living (or have lived) outside the UK, you may need to have a fee status assessment and this will be done by Goldsmiths when you apply. For general advice on tuition fee status, please visit the UK Council for International Student Affairs (UKCISA) website at ukcisa.org.uk

Scholarships and funding

Funding your studies is obviously a key consideration that you'll want to prepare for. As a postgraduate student there are several types of funding that may be available to you:

- Funding from Goldsmiths
- Funding from the UK government
- External sources of funding
- Funding from research councils

Funding from Goldsmiths

We offer a range of Goldsmiths-wide scholarships, bursaries and fee waivers that can provide financial assistance for study at postgraduate level. Some academic departments also offer their own subject-specific funding for prospective students. Find out more at gold.ac.uk//fees-funding/scholarships

Funding from the UK government

A Postgraduate Loan can help with course fees and living costs while you study a Masters degree. The loans, which are up to £10,906 per student in 2020, are:

- A contribution towards the cost of study
- Non-means tested
- Paid directly to the student into a UK bank account

UK and EU students may be eligible, but please visit gov.uk/postgraduate-loan for full details.

External sources of funding

Charities, trusts and professional bodies sometimes offer funding that you can apply for before and during your studies. Search online or use websites like scholarship-search.org.uk and thescholarshipclub.org.uk for details.

Funding from research councils - PhD studentships

We've been successful in securing multimillion pound funding for PhDs in the arts and humanities, computing, creative industries and the social sciences, through our involvement in several doctoral training centres and consortiums. This currently includes:

- 56 studentships per year through the CHASE AHRC Doctoral Training Partnership, for research in the arts and humanities
- 37 studentships per year through the SeNSS Doctoral Training Partnership, funded by the ESRC for research in the social sciences

Please note that these studentships are shared across a consortium of universities, of which Goldsmiths is a part. Studentships generally cover tuition fees, an annual maintenance grant (sometimes called a 'stipend'), and research training.

Find out more at gold.ac.uk/studentships

International students

We offer a range of Goldsmiths-wide scholarships, bursaries and fee waivers that can provide financial assistance for study at postgraduate level. Find out more at gold.ac.uk/fees-funding/scholarships

Country-specific funding

Your home country may offer scholarships or special funding opportunities. Popular opportunities include Chevening, Commonwealth Scholarship Commission (CSC), and Fulbright Commission scholarships. Visit gold.ac.uk/international/regions or contact your Ministry of Education or local British Council office, British High Commission or Embassy for information about sources of funding.

Federal loans for North American students

For eligible students from the US, we are approved by the US Department of Education to offer federal loans. If you wish to be considered, you should complete the Free Application for Federal Student Aid (FAFSA) and list Goldsmiths as a college to receive the results of your FAFSA. Our Federal School Code is G11765. You can find out more on our website.

Canadian students are also able to use their government loans. Goldsmiths is registered to certify national and provincial loans and grants.

Find out more

gold.ac.uk/pg/fees-funding

Visas and immigration

EU students

Please note that the UK's withdrawal from the European Union ('Brexit') could impact on the visa status of EU nationals. There is likely to be a new immigration system in place and therefore EU nationals will need to apply under the relevant category of the immigration rules. The Goldsmiths Immigration Advisory Service will have more information nearer the time of your application, and we will be updating our web pages as soon as further details are confirmed. Please visit gold.ac.uk/immigration for the latest guidance.

If you are coming to the UK for more than six months and are from outside the European Economic Area you probably need a visa to study with us.

Tier 4 (General) visa

This is the most common type of student visa, and is usually for those studying full-time with Goldsmiths. Goldsmiths sponsors students for full-time study under Tier 4.

If you require a Tier 4 student visa you will need to demonstrate to UK Visas and Immigration (UKVI) that you can cover your living costs in addition to your tuition fees when you make your visa application.

For most students applying for a visa to study with us in 2020 this was £11,385 plus tuition fees (please note that you'll need to account for extra if you are bringing family members with you) and an annual Immigration Health Surcharge (IHS), which is expected to be £470 per year from October 2020. This surcharge will entitle you to use the National Health Service (NHS) while you are in the UK. You won't be charged for emergency healthcare, hospital treatment or further medical treatment. (Please note that you will still need to pay for certain types of services, for example prescriptions, dental treatments and eye tests.)

Visit gold.ac.uk/immigration for further information.

Covid-19 updates

We do not expect the cost of applying for a visa or studying with us to change too much because of Covid-19, but there may be quarantine requirements for students entering the UK, which could lead to extra accommodation costs. We will always put the latest information about this on our Covid-19 update pages for prospective students and applicants: gold.ac.uk/staff-students/info/coronavirus/applicants

Guidance and support

The Immigration Advisory Service (IAS) at Goldsmiths provides visa advice and guidance to all international students - from before you arrive, through to when you graduate.

This includes help with making a student visa application overseas, travelling around Europe during vacations, and applying for work visas after your studies.

You'll find lots of useful information at gold.ac.uk/immigration and you can also contact the IAS at any point by email for help and guidance: immigration@gold.ac.uk

Supporting you through the application process

The IAS will contact all international students about the visa process throughout the summer before your programme starts.

If you're applying from overseas

We will write to you at each step of the application process with important visa information, and will support you through the process.

If you're applying from inside the UK

The IAS will help you make your application.

Check gold.ac.uk/immigration/contact for ways to get in touch.

Living costs

If you're an international student, we encourage you to have at least £300 in British currency on your arrival in the UK for your immediate needs until you set up a UK bank account. You can use international.studentcalculator.org to budget your studies.

Working during your studies

You may wish to find part-time work during your studies. If you have a Tier 4 student visa (see left), you'll usually be able to work for up to 20 hours per week (if you are a degree-level or above student) or 10 hours per week (if you are studying below degree level) during term time. Find out more at gold.ac.uk/immigration

If you want to know more about working during your studies, the IAS offers a series of dedicated visa drop-in sessions during the year. You can check the dates at gold.ac.uk/immigration/contact

Working after you graduate

The UK government announced in 2019 that it would introduce a new Graduate Post-Study Work visa route. The details are still being finalised but it is expected to start from the summer of 2021 and could mean that as a Masters or PhD graduate with a Tier 4 student visa you would be eligible to stay in the UK for up to two years after successfully finishing your studies. We will publish updates about this exciting new visa route on our webpages as soon as we know more: gold.ac.uk/immigration/after/graduate-immigration-route

Further information

If you have already applied to Goldsmiths and have a question, you can contact our International team by emailing international@gold.ac.uk or calling +44 (0)20 7078 5300.

Please note: the rules about student visas change regularly. You should check with the IAS if you are unsure about something.

The visa and immigration advice on this page is correct at the time of printing, but the latest information will always be available on our website.

Index of programmes

Taught Masters

Anthropology & Cultural Politics MA 69
Anthropology & Museum Practice MA 69
Applied Anthropology & Community & Youth Work MA 69
Applied Anthropology & Community Arts MA 69
Applied Anthropology & Community Development MA 69
Applied Theatre: Drama in Educational, Community & Social Contexts MA 109
Art & Ecology MA 71
Art & Politics MA 101
Art Psychotherapy MA 111
Artists' Film & Moving Image MA 71
Arts Administration & Cultural Policy MA 73
Arts Administration & Cultural Policy: Music Pathway MA 99
Arts & Learning MA 85
Black British History MA 89
Black British Writing MA 87
Brands, Communication & Culture MA 97
Children's Literature MA 85
Children's Literature: Children's Illustration MA 85
Cities & Society MA 107
Coaching PGCert 95
Cognitive Behavioural Therapy MSc/PGDip 111
Cognitive & Clinical Neuroscience MSc 103
Composition MMus 99
Computational Arts MA/MFA 77
Computational Cognitive Neuroscience MSc 77
Computer Games Art & Design MA 77
Computer Games Programming MSc 77
Consumer Behaviour MSc 95
Contemporary Art History Graduate Diploma 113
Contemporary Art Theory MA 113
Counselling MA 111
Creative & Cultural Entrepreneurship MA 79
Creative & Life Writing MA 87
Creative Practice MMus 99
Creative Writing & Education MA 85
Critical & Creative Analysis MA 107
Cultural Policy, Relations & Diplomacy MA 73
Cultural Studies MA 97
Culture Industry MA 97
Curating MFA 81
Dance Movement Psychotherapy MA 111

Data Science MSc 77
Design: Expanded Practice MA 83
Digital Journalism MA/MSc 91
Digital Media (with pathways in: Theory; Theory & Practice [Image Making]; Theory & Practice [Critical Computing]) MA 97
Dramaturgy & Writing for Performance MA 109
Ecology, Culture & Society MA 107
Education: Culture, Language & Identity MA 85
Events & Experience Management MA 73
Film & Screen Studies MA 97
Filmmaking (with pathways in: Cinematography; Directing Fiction; Editing; Producing; Screen Documentary; Sound Recording, Post-Production & Design) MA 97
Forensic Psychology MSc 103
Fine Art MFA 71
Foundations in Clinical Psychology & Health Services MSc 103
Gender, Media & Culture MA 107
Global Media & Transnational Communications MA 97
Global Political Economy MA 101
History MA 89
Human Rights, Culture & Social Justice MA 107
Humanistic & Psychodynamic Counselling Graduate Certificate 111
Independent Games & Playable Experience Design MA 77
International Relations MA 101
Journalism MA 91
Literary Studies (with pathways in: American Literature & Culture; Comparative Literature & Criticism; Critical Theory; Literature of the Caribbean & its Diasporas; Modern Literature; Romantic & Victorian Literature & Culture; Shakespeare: Early & Modern) MA 87
Luxury Brand Management MA 79
Management of Innovation MSc 95
Marketing & Technology MSc 95
Media & Communications MA 97
Migration & Mobility MA 69
Multilingualism, Linguistics & Education MA 85
Museums & Galleries Entrepreneurship PGCert 79
Music (Contemporary Music Studies; Ethnomusicology; Musicology; Popular Music Research; General) MA 99
Music, Mind & Brain MSc 103
Musical Theatre MA 109
Occupational Psychology MSc 95
Performance & Culture: Interdisciplinary Perspectives MA 109
Performance & Related Studies MMus 99
Performance Making MA 109

Photography: The Image & Electronic Arts MA 97
Photography & Urban Cultures MA 107
Political Communications MA 97
Politics, Development & the Global South MA 101
Popular Music MMus 99
Postcolonial Culture & Global Policy MA 97
Professional Leadership for Social Work MA/PGDip/PGCert 105
Promotional Media: Public Relations, Advertising & Marketing MA 97
Psychology of the Arts, Neuroaesthetics & Creativity MSc 103
Queer History MA 89
Race, Media & Social Justice MA 97
Radio MA 91
Research Architecture MA 113
Script Writing MA 97
Social Anthropology MA 69
Social Entrepreneurship MA 79
Social Research MSc 107
Social Work MA 105
Social Work CPD (Continuing Professional Development) modules MA-level 105
Sociocultural Linguistics MA 87
Sonic Arts MMus 99
Television Journalism MA 91
Tourism & Cultural Policy MA 73
Translation MA 87
Understanding Domestic Violence & Sexual Abuse MA 111
Understanding Domestic Violence & Sexual Abuse CPD (Continuing Professional Development) modules MA-level 111
User Experience Engineering MSc 77
Virtual & Augmented Reality (3D Graphics & User Experience Pathway) MA 77
Virtual & Augmented Reality (Programming & Computer Science Pathway) MSc 77
Visual Anthropology MA 69
Visual Sociology MA 107
World Theatres MA 109

PGCE programmes

Primary PGCE 85
Secondary Standard Programme PGCE: Art & Design; Biology; Chemistry; Design & Technology; Drama; English; Mathematics; Media Studies with English; Modern Languages; Physics 85
Secondary Part-Time Programme PGCE: Biology; Chemistry; Design & Technology; English; Physics 85

Research degrees

MRes

Advanced Practices 113
Anthropology 69
English 87
History 89
Media & Communications 97
Research Methods in Psychology 103
Visual Anthropology 69
Visual Cultures 113

MPhil & PhD

Advanced Practices 113
Anthropology 69
Art 71
Art Practice & Learning 85
Art Psychotherapy 111
Arts & Computational Technology 77
Community & Youth Work 75
Computer Science 77
Counselling & Psychotherapy 111
Creative Writing 87
Cultural Management & Creative Entrepreneurship 73
Cultural Studies 97
Design 83
Drama 109
Education 85
English, Comparative Literature or Linguistics 87
History 89
Law 93
Literary & Critical Theory 87
Management 95
Media & Communications 97
Music (Research; Composition; Performance Practice; Sonic Arts) 99
Politics 101
Psychology 103
Psychology (IMS) 95
Religious Studies 75
Research Architecture 113
Social Work 105
Sociology 107
Translation 87
Translation by Practice 87
Visual Anthropology 69
Visual Culture 113
Visual Sociology 107

Please note: most of our departments offer research opportunities, so if your area of interest isn't listed above feel free to get in touch with a suitable member of staff directly.

Original design by Baxter and Bailey. Subsequent design development by the Student Marketing and Events team at Goldsmiths.

Thank you to the artists, photographers and designers whose work is shown, including BA Design graduate Annie Kruntcheva (anniekruntcheva.com).

Images in this publication of current students and alumni have been taken with their permission. If you have any concerns about an image in this publication, their use, and your rights, please email communications@gold.ac.uk

Images: page 7, Katy B © Dreamstime; page 27, United Nations HQ New York City by Daryan Shamkhali on Unsplash; page 28, Professor Frances Corner by Ben Queenborough; page 36, aerial shot by Circus 360; page 36, Houses of Parliament by David Dibert on Unsplash; page 69, Underground by Tom Parsons on Unsplash; pages 70-71, works by Daniel Arcand & Melmel Chen; page 101, placard by Toa Heftiba on Unsplash; pages 112-113, central image by Maggie Roberts (Fragile States 2018).

The campus boundary on the front cover map is approximate.

Please note that some of the department facilities listed may be subject to booking, availability or taking certain modules.

Equality and Diversity

Goldsmiths is passionate about advancing equality and celebrating diversity. You can find out more at gold.ac.uk/equality-diversity

Disclaimer

We have made every effort to ensure the content of this publication is up to date as of June 2020. If you receive an offer to study with us, you will be sent a set of terms and conditions governing our relationship with you. This includes things like what happens if the information we've already provided to you changes. Goldsmiths does not accept liability for the accuracy or reliability of any information contained within third-party publications/websites referred to or signposted to in this publication.

You can read our most up-to-date disclaimer at gold.ac.uk/disclaimer

© Goldsmiths, University of London 2020

The copyright in these pages belongs to Goldsmiths, University of London, and all rights are reserved.

Goldsmiths, University of London
New Cross
London SE14 6NW
United Kingdom



Term dates

The 2021 entry term dates, including reading weeks, can be found at gold.ac.uk/term-dates

Find out more about studying at Goldsmiths

Check gold.ac.uk/course-finder for further information about our degrees.

You can also get in touch with our Enquiries team, or chat to us online:

+44 (0)20 7078 5300
course-info@gold.ac.uk
gold.ac.uk/contact

Goldsmiths, University of London
New Cross
London SE14 6NW
United Kingdom

gold.ac.uk

 GoldsmithsLondon

 GoldsmithsUoL

 GoldsmithsUoL

 GoldsmithsUoL

 GoldsmithsUoL

 GoldsmithsUoL