

Different is what we do



In this guide

Goldsmiths was founded in 1891 and has been part of the University of London for 120 years. With a history of being progressive and proud, Goldsmiths celebrates and welcomes original opinions.

We want to support you in all your differences, as your unique perspectives make Goldsmiths special. In this guide, we foreground the stories of our students and graduates.

They represent a student community that's as diverse as it is impressive. What they all share is that they came with an open mind and will leave with skills, knowledge, connections and memories that last a lifetime.

Extraordinary stories

Postgraduate subjects

We offer an alternative mix of subjects with degrees in the arts, humanities, social sciences, computing, management and law

Anthropology

Art

Arts Administration & Cultural Policy

Business Management

Community Studies

Computing

Creative & Cultural Entrepreneurship

Curating

Data Science

Design

Education

English & Creative Writing

History

Journalism

Law

Marketing

Media, Communications & Cultural Studies

Music

Politics & International Relations

Psychology

Social Work

Sociology

Theatre & Performance

Therapeutic Studies

Visual Cultures



→ Find out more about these courses at gold.ac.uk/course-finder

Distinct possibilities

At Goldsmiths, academic excellence and imaginative course content combine to make a place where original ideas are allowed to grow



Masters degrees

We currently offer more than 150 degrees at Masters level. These are taught courses that often culminate in a research project or dissertation. Explore the list on the previous page for all the different subject areas available.

You may want to take a Masters in order to change career, to explore your area of expertise in greater depth, or to form the basis for further study, such as a PhD. They usually last 12 months full-time or two years part-time, although there are some exceptions that take longer. See page 14.

PG Certificates and Diplomas

We also offer some PGCert and PGDip courses across different subjects. These are Masters-level programmes that are shorter, but can be the right choice for career development or in order to delve into a new subject. See page 14.

gold.ac.uk/pg/pg-cert-pg-dip

Teacher training

Goldsmiths has been training teachers for more than 120 years, and we are proud of our reputation for excellence in this field. We train people for Lower and Upper Primary, and across a range of subjects for Secondary teaching. Our PGCE programmes are designed to develop all the skills and knowledge you'll need to become a responsible and effective teacher. See page 16.

gold.ac.uk/pgce

Research degrees

Goldsmiths has a large and supportive research community, and is recognised for world-leading and internationally excellent work in many subject areas. In fact, 79% of research undertaken by academics at Goldsmiths has been rated as 4* or 3* – the highest levels possible – in the latest Research Excellence Framework (REF) 2021. Our research degrees (MPhil and PhD) will encourage you to think independently and produce original work. See page 17.

gold.ac.uk/research

Courses for international students

We offer a range of preparation programmes for students who may not speak English as their first language. These are ideal if you want to improve your English or develop your UK academic study skills before you start a postgraduate degree. See page 18.

gold.ac.uk/preparation

Distance learning

We offer some distance learning options as part of the University of London.

gold.ac.uk/distancelearning

Goldsmiths campus

The majority of postgraduate teaching takes place on one site in New Cross, South East London



Halls locations

A	Loring Hall	On campus
B	Ewen Henderson Court	5-min walk
C	Chesterman House	2-min walk
D	Surrey House	5-min walk
E	Raymont Hall	20-min walk
F	Town Hall Camberwell	15-min bus ride



Bold history



1891

The Goldsmiths' Technical and Recreative Institute is founded, dedicated to improving the skills and knowledge of the industrial, working and artisan classes

1904

Goldsmiths joins the University of London



1950

Mary Quant begins studying at Goldsmiths, and in the 1960s becomes an entrepreneurial fashion trailblazer

1970s

Former student Malcolm McLaren starts managing the Sex Pistols and helps pioneer punk culture

1989

Alex James and Graham Coxon – who later became half of legendary Britpop band Blur – meet on their first day studying at Goldsmiths

1990s

The art world is dominated by the famous Young British Artists (YBAs), many of whom (including Damien Hirst and Sarah Lucas) studied here



2013

James Blake, who studied BMus Popular Music, is awarded the Mercury Prize

2014

Graduate Steve McQueen wins an Oscar for his film 12 Years a Slave



2018

Goldsmiths Centre for Contemporary Art (CCA) opens, bringing world-class exhibitions to South London

2019

Graduate Bernardine Evaristo is awarded the Booker Prize for her novel *Girl, Woman, Other*

2022

BA Drama and Theatre Arts alumna and director Rebecca Frecknall wins the Laurence Olivier Sir Peter Hall Award for Best Director for the West End revival of *Cabaret*



2023

The Goldsmiths Prize for literature celebrates 10 years of recognising fiction that breaks the mould

Goldsmiths awards an honorary fellowship to cultural icon and queer hero Bimini



2025

Goldsmiths celebrates 120 years since we opened our doors to students as Goldsmiths College.

Pioneering impact

Our history goes back to 1891, but we're always looking forward. Full of inventive and original students and staff, Goldsmiths provides an environment where new ideas flourish

At Goldsmiths, we aim for academic excellence, with expert teachers who have experience of industry or research. This combination gives you the opportunity to develop a strong foundation of learning in your subject, along with an insight into how it looks in the real world.

Whatever your subject, we strive for a creative approach to teaching – embracing new ideas with energy. From courses that offer a fresh perspective on a traditional subject to Masters degrees that are unique in the UK and even globally, Goldsmiths loves to push the boundaries.



My favourite thing about Goldsmiths is the university's dedication to the arts and the humanities, and the unique courses it offers as a result. I was very impressed by the expertise of my lecturers, both leaders in their respective fields, and the quality of their support during my research process.

Martin
Masters student



Goldsmiths is home to academics who are at the forefront of research in their fields. 79% of research undertaken at Goldsmiths is rated as 3* or 4* – the highest levels possible (Research Excellence Framework, 2021), which shows our commitment to pushing forward the concepts, theories and research that will empower us all to face the challenges of tomorrow.

As well as carrying out progressive and pioneering research, our academics actively teach on our degrees, and they care about getting the best out of you.

Bold and original subject areas

Goldsmiths' reputation for being a trailblazing institution is backed up by the range of areas you can study as a postgraduate – from Masters degrees looking at ecology and environmental justice to those that explore computational linguistics and bold approaches to law.





Combining disciplines to fight injustice

Forensic Architecture (FA), a research agency based at Goldsmiths, has been undertaking research into state and corporate violence for more than 10 years. The agency is made up of architects, filmmakers, coders, activists and legal experts who investigate human rights violations and state crimes through spatial design. Leading the way in this emergent academic field, FA provides new kinds of evidence for international prosecution teams, political organisations, NGOs, and institutions such as the UN.

The agency is Turner Prize-shortlisted and received a European Cultural Foundation award for inspiring change in the way people shape societies, for “seeing art as a way to expose injustice in communities, and for helping people to recover and rethink the past in order to change the world”.

forensic-architecture.org



Unique introductions

Every day, chance conversations in seminars, over coffee, or between library shelves can spark life-long friendships, creative adventures or new enterprises. From inspiring lecturers to innovative fellow students, you'll find a buzzing and energetic group of people who want to change things for the better.

We're proud to have a community of staff and students that really values diversity. So whatever country or background you come from, whatever gender you identify as, or whatever your sexuality, you'll be welcomed to the campus and into the open-minded community.

Rewarding creative daring

We are home to the annual Goldsmiths Prize, a literary award that recognises the most innovative new novels. Former winners include Ali Smith, Isabel Waidner and Lucy Elmann. Shortlisted writers are often invited to the campus, giving you the opportunity to hear them reading from and speaking about their work.

gold.ac.uk/goldsmiths-prize



One-of-a-kind experiences

We have a fantastic public events programme that includes thought-provoking talks, seminars, recitals, film screenings, readings and exhibitions. You'll find free events regularly taking place on campus or online – a great way for you to connect with contemporary issues, hear new viewpoints, get inspired and network.

Making art accessible

Goldsmiths is home to a free public gallery on campus. It's housed in a Victorian bathhouse given new life by the architectural collective Assemble. The Goldsmiths Centre for Contemporary Art (CCA) builds on our reputation for excellent art practice, providing an inspiring source of creativity and debate for students, academics and the local community.

Goldsmiths CCA hosts international artists, projects and residencies (as well as a café offering coffee and cake). Everyone is welcome.

goldsmithscca.art



The lecturers are inspiring and encourage you to think outside of the box and to develop critical thinking. Goldsmiths gives you the freedom to build your own path, to pursue your interests or discover new ones, and to learn more about yourself.

Roxane
Masters student

Masters degrees, PG Certificates and Diplomas

These courses allow you to explore your passions or something fresh. And we've broadened the options for studying at this level

Types of Masters degrees we offer

MA – Master of Arts
MFA – Master of Fine Arts
LLM – Master of Laws
MMus – Master of Music
MSc – Master of Science
MRes – Master of Research

Masters degrees are taught courses that often culminate in a research project or dissertation, which can form the basis for further study such as a PhD.

Some start a Masters degree directly after graduating from their first degree, but many others return to study at this level to progress in their job or to take their career in a new direction.

PGCerts and PGDips

If you are looking for a shorter postgraduate study option, then a Postgraduate Certificate (PGCert) or Postgraduate Diploma (PGDip) could be the perfect choice. PGCert and PGDip programmes give you the chance to engage with Masters-level thinking and ideas but with less of a time commitment.

The wide range of subjects we offer at Goldsmiths allows you to further your career or learn something new in a flexible way that suits you.

gold.ac.uk/pg/pg-cert-pg-dip

Postgraduate entry points

While most of our postgraduate programmes begin in September, we also offer a select number of programmes with a January start, providing you with the flexibility to begin your studies when it best suits you.

These January-entry programmes are indicated with an asterisk (*) in our programme list insert.

Differing perspectives

The people studying for Masters degrees at Goldsmiths are just as varied as the programmes on offer



Seven years ago, after stepping outside this space, I've become a more complete version of myself (although we never really arrive). I was able to contextualise my inner creative self in a more articulate way, and – thanks to the constant encouragement and support of this institution – redefine myself as an immigrant woman artist. Although I left the physical space, I carry it within me as a seminal seed of change, which still reverberates ripples into my forever-changing creative identity.

Lavinia
MA Performance Making

Lavinia directs, writes and produces films. Her 2019 film, 'Acceptable Damage', was nominated for Best Action at the National Film Awards UK



Through discourse held with a wickedly smart cohort and exceptional supervisors, my world view expanded greatly. This one brief year enabled me to envision and design a clearer future for myself as a participatory arts facilitator. And equally, I have made lifelong friendships and met people who have become co-conspirators.

Abu
**MA Applied Theatre:
 Drama in Educational,
 Community &
 Social Contexts**

Abu is from Chicago and works as an arts facilitator, including collaborating with those he met on the Masters



Studying at Goldsmiths was more than getting a Masters for me – it was about building lifelong friendships; the growth that I have experienced not only professionally but personally; and the faculty members who not only assisted me academically but are now my mentors and friends for life.

Beenish
**MA Human Rights,
 Culture &
 Social Justice**

Beenish went on to work for the Henna Asian Women's Group as a project manager and volunteer coordinator



After 10 years of working in the creative industries, I wanted to develop certain aspects of my personal practice and perspectives surrounding culture within society. The course looked broad and multidisciplinary but delved deeper into fields of academic understandings and professional practices I hope to incorporate into my career. I have established some great connections at Goldsmiths and look forward to working with them in the future.

Tommy
Masters student

Photographer Tommy recently brought together other image-makers for a zine and charity exhibition in Peckham about mass gatherings during the pandemic

Teacher training

With strong links to our partnership schools and a supportive system of personal tutoring, Goldsmiths offers excellent training for the next generation of teachers

Developing and educating teachers is central to the early history of Goldsmiths (we've been preparing people for the classroom since the early 1900s), and we proudly continue this tradition. Building on these strong foundations, we offer high-quality, research-based teaching and ask fascinating questions about education in the widest sense of the word.

We offer Primary and Secondary Initial Teacher Training (ITT) programmes, and you can study full-time or part-time.

PGCE (Primary): Standard or with Modern Languages or Mathematics

PGCE (Secondary) Standard Programme: Art & Design, Biology, Chemistry, Design & Technology, Drama, English, English & Media, Mathematics, Media, Modern Languages, Physics

PGCE (Secondary) Part-time Programme: Art & Design, Design & Technology, English, Mathematics, Modern Languages, Science (Biology, Chemistry, Physics)



Watch PGCE student Sachelle talk about her teacher training experience on our Youtube channel [explore.gold/sachelle](https://www.youtube.com/channel/UCqWz8v8v8v8v8v8v8v8v8v8)

Research degrees

With a world-class reputation for creativity and innovation, and a focus on interdisciplinary collaboration, we can provide you with a unique intellectual environment for bold discoveries

Most of our academic schools offer research opportunities, and we attract students from all over the world to study for an MPhil or PhD.

Being a researcher is a transformative experience that will prepare you for leadership and innovation in your chosen field. We have around 600 research students, and community and collaboration are vital to the research experience here.

The degree structure

You will have a main supervisor and a second supervisor. During your first three months at Goldsmiths your supervisors will help you draw up a research plan and set detailed objectives for your first year. They will also be available to offer advice and suggestions as the project evolves, and you'll receive regular one-to-one tutorials.

Throughout your programme you'll progress with your independent learning, but there are also lots of training and professional development opportunities that you can access. And each year you'll complete an annual progress report to reflect on how your research is developing. You'll be assessed on your thesis (which may contain a practical component depending on your research), and on an oral examination (viva voce).

Training opportunities

During your PhD, you can undertake training to develop your research skills. Some of this will be delivered through your supervision, while some academic schools organise discipline-specific seminars and training courses.

The Graduate School

The Graduate School acts as your advocate within Goldsmiths, giving you advice and direction if you need it, and providing dedicated research facilities and training to make sure you're well equipped for the challenges of graduate research. It also offers funds to enable you to attend conferences and/or conduct research at other institutions, and to develop your own conferences and events at Goldsmiths.

[gold.ac.uk/graduate-school](https://www.gold.ac.uk/graduate-school)



Get in touch with a member of staff directly to discuss your options. You can find each of our programme pages at [gold.ac.uk/course-finder](https://www.gold.ac.uk/course-finder)

Courses for international students

We offer a diverse range of preparation programmes – whether you want to improve your English or develop your academic skills ready for studying in a new country

Pre-Masters Pathways

1 year full-time

Our Pre-Masters Pathway programmes will prepare you for your future postgraduate study in the UK, or act as a conversion course if you've studied one subject at undergraduate level but want to change focus at postgraduate level. They're designed especially for international students.

You will also improve your study skills and use of academic English — the essential skills you will need to successfully study a Masters degree. On completion of the programme, you will be awarded a Graduate Diploma or Pre-Masters Certificate and will be guaranteed a place on a relevant Goldsmiths Masters if you obtain an overall score of 50% or more. Some progression routes are subject to an interview.

gold.ac.uk/international/how-to-apply/pathways/premasters

Graduate Diploma in Art

1 year full-time

This programme is aimed at students who are considering a Masters in the School of Art, but who need a year to develop their artistic practice, as well as their critical and academic English language skills. It is a unique programme that will integrate you into the studio-based postgraduate community in the School of Art. You will develop your academic writing, listening and speaking. You will also attend lectures and seminars in

critical studies, and will undertake self-directed practice-based study. If you successfully complete the Graduate Diploma (by passing all elements and achieving an average mark of 50% or above overall), you will be guaranteed entry onto the MFA Fine Art, MFA Curating, MA Artists' Film and Moving Image, or the MA Art and Ecology. gold.ac.uk/preparation/diploma-art

Pre-sessional English language programmes 6, 9 or 12 weeks full-time

These programmes are for international students who have a place on a degree at Goldsmiths and who want or need to improve their English language skills before they begin. Programmes last between 6 and 12 weeks (depending on your level of English), and start every summer, preparing you for studies beginning in the autumn.

We have rooms available in our halls of residence (see page 40) for the duration of the Pre-sessional courses.

You can apply directly from the Goldsmiths website. The English language requirements range from an equivalent of IELTS 4.5 to 6.5; please use the table opposite or visit our website to find the right course for you.

gold.ac.uk/preparation/pre-sessional-english-language

Entry requirements for pre-sessional programmes

12 weeks full time 8 June – 28 August 2026	You can join the 12-week programme if your current overall UKVI IELTS score is 1.0 below the requirement for the degree you're joining (unless the requirement is 5.0). The table below indicates what this will be.		The fees for 2026 have not yet been confirmed. For 2025, the fee for the 12-week programme was £6,480
	Degree entry requirement	Entry requirement for the 12-week programme	
	7.0	6.0 (with no individual score lower than 4.5)	
	6.5	5.5 (with no individual score lower than 4.5)	
	6.0	5.0 (with no individual score lower than 4.5)	
	5.5	4.5 (with no individual score lower than 4.5)	
9 weeks full time 29 June – 28 August 2026	You can join the 9-week programme if your current overall UKVI IELTS score is 0.5 below the requirement for the degree you're joining. The table below indicates what this will be.		The fees for 2026 have not yet been confirmed. For 2025, the fee for the 9-week programme was £5,100
	Degree entry requirement	Entry requirement for the 9-week programme	
	7.0	6.5 (with no individual score lower than 5.0)	
	6.5	6.0 (with no individual score lower than 5.0)	
	6.0	5.5 (with no individual score lower than 5.0)	
	5.5	5.0 (with no individual score lower than 5.0)	
6 weeks full time 20 July – 28 August 2026	You can join the 6-week programme if your current overall UKVI IELTS score is 0.5 below the requirement for the degree you're joining. There may also be a minimum writing skill score requirement. The table below indicates what this will be.		The fees for 2026 have not yet been confirmed. For 2025, the fee for the 6-week programme was £3,960
	Degree entry requirement	Entry requirement for the 6-week programme	
	7.0	6.5 (with a minimum of 6.5 in writing and no individual score lower than 5.5)	
	6.5	6.0 (with a minimum of 6.0 in writing and no individual score lower than 5.5)	
	6.0	5.5 (with no individual score lower than 5.5)	
	5.5	5.0 (with no individual score lower than 5.5)	

A fresh start

Returning to education after working or caring for others may be daunting, but the change can bring huge rewards

Individual support

If you've not stepped into a seminar room for a few years, you may be concerned about your research and essay-writing skills. At Goldsmiths, there is lots of support available. During Welcome Week, there are inductions from your academic school, the Library and other facilities. Then, while you study, you can access regular workshops led by study skills tutors, academics or subject librarians. There's more information about the other support that's available on page 36.

Course structure

At Goldsmiths, we offer a variety of postgraduate programmes and study modes. There's lots of opportunity to pick something that works for you, whether that's studying part-time, or taking on a shorter course, such as a Postgraduate Certificate or Diploma. See page 14.



The course and the tutors encouraged me to be entrepreneurial, to do my own thing and not rely on others to create opportunities for me. They encouraged me to see my prior training and experience as a lawyer as a complement to, rather than diversion from, my work as a curator.

Alana, MFA Curating

Ways you can step back into studying

Before coming to university, why not get an insight into your subject and the study experience at little or no cost:

- Attend free public events like lectures, book launches, panel discussions and exhibitions. Goldsmiths has an extensive public events series (gold.ac.uk/events), as do places like the Wellcome Collection (wellcomecollection.org) and the V&A Museum (vam.ac.uk/whatson).
- Websites like The Conversation provide in-depth analysis from academics and PhD students writing about their research areas, and are a good way to access topical issues: theconversation.com/uk
- Platforms like FutureLearn offer hundreds of free online courses from specialist organisations – a great way to start exploring a subject you're interested in: futurelearn.com
- Attend a Goldsmiths Postgraduate Open Event to find out more about life as a postgraduate student. gold.ac.uk/open-days



Setting you up for new beginnings



Many of our programmes offer the opportunity to take an industry placement. These are a fantastic way to develop skills and build a network of useful contacts. We also set up a variety of internships: on campus, in research, in small businesses and in start-ups.

Even if you don't take a placement or internship, we run regular careers fairs, networking events and industry panels where you can hear from professionals working in a variety of sectors.



Outstanding student city

Discover a great global city – home to people from all over the world, and a hub for industry, politics and the arts



London is world-famous for its cultural life and diversity. And it's been recognised as a fantastic place to study – London was voted the 2025 Best Student City by QS*. From incredible food through to nightlife that caters to every possible taste, and from the endless cultural opportunities of galleries, theatre and music through to the tranquillity of the Royal Parks, there is plenty to keep you entertained and inspired.

Exceptional opportunities

Choosing to study in London is like opening the door to thousands of opportunities. Whether it's the wealth of political and media organisations, the start-ups that are shaping the future of tech, or the diverse cultural landscape that you want to tap into, the city is bursting with chances to enrich your learning. This could be through networking, placements, the speakers who visit campus, or the inspiring environment around you.

If you are keen to find work to support you during your degree, London offers a wealth of part-time opportunities that are possible to fit around your studies and that can help develop your transferable skills. Studying in London will also bring you closer to the large organisations that influence Britain and the world – whether you're interested in working in politics, the media, an NGO or the arts.

As a Goldsmiths student, you have access to the University of London facilities at Senate House and seven specialist libraries, as well as research opportunities in museums and other organisations.

Low-cost living

Being in London can be expensive if you're a tourist, but as a student, you can take advantage of lots of discounts and money-saving options. You'll find so much choice and free culture on your doorstep, that with a bit of planning and creative thinking, you can find many affordable options. You'll also be able to make use of student discounts on things like travel, shopping and entertainment.



I absolutely loved London – it has an incredible energy and a DIY spirit, and living in London was incredibly inspirational for my writing and personal development.

Tausif, MA Art & Politics



Journey times

Luton Airport
1 hour 16 mins ↑

Stansted Airport
1 hour 20 mins ↗

City Airport
46 mins →

← Heathrow Airport
1 hour 15 mins

Gatwick Airport
43 mins ↓

🚉 ➡ Paddington
32 mins

🚉 🚉 🚉 Euston
39 mins

🚉 Oxford Circus
31 mins

🚉 🚉 🚉 Liverpool Street
23 mins

🚉 Shoreditch High Street
15 mins

🚉 Green Park
21 mins

🚉 ➡ Waterloo
19 mins

🚉 ➡ London Bridge
9 mins

🚉 🚉 Canada Water
5 mins

🚉 Canary Wharf
15 mins

🚉 North Greenwich
18 mins

🚉 Battersea Power Station
40 mins

🚉 ➡ Peckham Rye
20 mins

🚉 🚉 New Cross Gate

🚉 ➡ New Cross

🚉 🚉 Clapham High Street
30 mins

🚉 ➡ Brixton
39 mins

Journey times to Goldsmiths using public transport. This map is for illustration purposes only and is not to scale.



Unique local areas

Explore authentic and alternative London life through the distinct areas local to Goldsmiths

New Cross

Goldsmiths is in New Cross, South East London – a place with plenty of character. It’s in Zone 2 and just 10 minutes by train to Central or East London, so it’s quick and easy to access the landmarks and nightlife of the bustling city, but there’s still lots going on locally to keep you entertained.

The area is richly creative with a higher-than-average proportion of independent places to discover, so it feels different to anywhere you’ve been before. It also has a large student population, and a diverse range of cafés, restaurants and shops nearby, including food from around the world – the Caribbean, China, Hungary, India, Korea, Greece, Lebanon and Turkey are all represented. There’s also plenty of nightlife nearby, including pubs, comedy venues and clubs. Local green spaces include Fordham Park and Telegraph Hill Park, which has amazing views over London – especially at sunset.

Local areas to explore

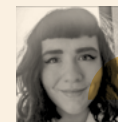
London is made up of a collection of different neighbourhoods, each with a charm of their own. Getting to know different areas and finding new favourite places is one of the best parts of studying in such a vibrant city.

New Cross is within walking distance of fascinating, exciting and historic neighbourhoods like Deptford, Peckham and Greenwich. It’s also well-connected to East London via the Overground, so you can travel to places like Whitechapel, Shoreditch and Dalston easily too.

→ Explore New Cross and nearby areas at gold.ac.uk/local



10 minutes
by train to
Central London



I have many favourite aspects about studying and living in South East London, but one of them was the different parks, pubs, and restaurants I was able to sit and work in while enjoying food or a beer or just being outside.

Maggie, MA Contemporary Art Theory



Distinctive campus

From lectures to late-night Library sessions, almost all your teaching and support takes place on a single-site campus



The Goldsmiths campus is a bustling place. Wander through the corridors and you'll hear music students rehearsing, see art students carrying work from their studios, and read flyers for the latest events that are taking place. Its mix of contrasting quirky architectural styles creates a special place, where different experiences and ideas are shared.

The Students' Union

Goldsmiths Students' Union (SU) is a place for all students at the university to meet and relax. The organisation is available to support and represent anyone who needs it while they are studying. Its services include:

- Student-run societies and sports clubs
- A café and a bar
- Social events held during the day and evenings
- Student-run media: a newspaper, magazine and radio station
- Campaigning on issues such as anti-racism on campus
- A confidential, non-judgmental advice service
- Running school course-related representation networks

goldsmithssu.org

The Library

With areas for individual and group study, Special Collections, and an events programme, our Library is very popular with students across all subjects. You can access reading and audio-visual materials and attend academic support workshops to learn more about things like managing your workload and presenting. If you have any questions, your subject librarian will be happy to help.

Deptford Town Hall

This Grade II-listed building is one of the most historic on campus, having been opened in 1905 as the Town Hall of the former Borough of Deptford. It was acquired by Goldsmiths in 1998. It reflects the area's maritime connections, and on its front stand four statues with links either to Britain's role in slavery or the colonial system that supported it.

This symbolic decoration raises difficult questions about how to deal with historic celebrations of those who wielded imperial power and the College is developing a programme of work to explain and interpret their modern-day significance. Find out more at explore.gold/statues

Campus highlights

The College Green

This lush spot is the perfect place to meet friends or play sports on a warm day.

Thirty Five

A stylish café at the heart of the campus.

First floor of the Professor Stuart Hall (PSH) Building

The mezzanine here offers comfy seating and panoramic views of the campus.

Goldsmiths Centre for Contemporary Art (CCA)

Our own public gallery hosts exhibitions and talks from world-class artists.

Great Hall

A grand and historic space that's often used for music rehearsals and concerts.

Cinema

This 101-seat cinema room is used to show student work.

'The Squiggle'

This two-storey metal sculpture sits on the top of the Ben Pimlott Building and dominates the New Cross skyline.

The Refectory

Catch up with friends for lunch in our food court-style canteen. From roasts to wraps, there's lots of choice to keep everyone happy.

Benugo at the PSH

This café serves hot and cold food in a spectacular light-filled atrium.

St James Hatcham

A former church that holds student exhibitions and creative computing labs.

Anthropology Garden

A peaceful spot that includes an allotment where students grow fruit and vegetables.



Take a virtual tour and explore our campus from wherever you are at virtualtours.gold.ac.uk

Remarkable facilities

Art

- All art students have their own studio space for the entire length of their degree, these are mixed across year levels to encourage peer-group learning.
- There are many specialist practice areas that complement traditional art disciplines: casting; woodwork; metal; ceramics; constructed textiles; fine art printmaking; graphics and time-based media; photography; print and dye; stitch and fabric and 3D printing.
- Each practice area is staffed with experienced technicians to support students.

Design

- Studio space is provided to all design students, and they are encouraged to use this to build a studio culture of collaborative practice and peer-to-peer learning.
- The School of Design has its own dedicated practice labs, staffed by experienced and supportive tutors.
- Labs include: a ceramics area; moulding and casting workshop; wood workshop; plastic fabrication lab; textiles lab, with facilities for sewing, digital embroidery, screen printing and vinyl cutting; metal workshop; digital fabrication lab, including laser cutting, 3D printing, scanning and CNC routing/milling machinery.

Computing

- Specialist rooms and equipment enable students and academics to create work and collaborate.
- The digital fabrication and physical computing labs are housed in a converted 19th-century church.
- There is a sonics immersive media laboratory, with industry-standard sound, lighting and video technologies and a motion capture suite for explorations with virtual reality.
- There is a User Experience Lab to conduct studies in a range of digital spaces.
- Six Computer Labs are used for lectures, with access to a range of state-of-the-art software.



Psychology

- Psychology's fascinating research requires a lot of specialist equipment, such as EEGs, brain stimulation suites, mobile neuroimaging tools, and eyetracking technology.
- The Infant Lab, which studies the cognitive development of babies and children, uses infant EEG and 'tickling light' tactile sensors along with other equipment to help understand young childhood behaviour.



Depending on which subject you choose, you may have access to industry-standard equipment and dedicated spaces to help develop your skills and creative practice

Music

- Students benefit from a suite of practice rooms, fully equipped PA rehearsal rooms, and performance spaces with Steinway pianos, as well as access to other performance spaces internally and externally.
- The Music Technical Office is open six days per week, with an equipment store stocked with instruments, keyboards, frontline and backline gear. Technical staff are available to assist and support students with technical needs and projects.



- The Goldsmiths Music Studios was established by Grammy-nominated record producer, Mikko Gordon, and features three large recording spaces with natural light and variable acoustics, a main control room based around a 48-channel vintage Calrec console, and an MTA 980 Console that previously belonged to Radiohead.
- The Electronic Music Studio features a collection of vintage and historic instruments, amplifiers, tape machines, synthesisers and microphones in the setting of a state-of-the-art contemporary digital facility.

Media, Communications & Cultural Studies

- Teaching is primarily in the purpose-built Professor Stuart Hall Building, where you'll find industry-standard production facilities.
- Depending on your course, you'll have access to over 100 professional camera and audio kits.
- Film and television facilities include 20 edit suites, a TV studio, audio post-production suites, and a calibrated screening room.
- We also offer photography studios, darkrooms and a digital print lab, digital radio studios and edit rooms, animation rostrums, illustration studios, and nine digital media labs.

Theatre & Performance

- Dedicated facilities include six studios, and costume and scenography workshops.
- Our George Wood Theatre recently had a multi-million-pound refurbishment, and holds flexible seating for up to 140, plus industry-standard lighting and sound equipment.
- There is also a media lab with a bespoke recording booth and video- and sound-editing facilities.



Exceptional skills and enterprising minds

We want to help you prepare for life after you leave, whether you want to study further, work for others or start your own venture

Open doors for your career

The collaborative nature of our campus experience, our strong industry links, and the support we offer our students means your time at Goldsmiths will help you to achieve your aspirations.

Our graduates go on to do amazing things across many industries. From filmmakers to entrepreneurs, art therapists to journalists, musicians to teachers and social workers – our alumni are changing the face of British culture and making a real difference in our society.

gold.ac.uk/skills-careers

Careers advice from experts

We have a very active Careers team at Goldsmiths who are focused on helping you gain skills and new experiences as well as offering you expert advice. You can access support including one-to-one appointments with careers consultants, skills webinars, CV checks, and practice interviews, and there are resources to help you search and apply for jobs.

gold.ac.uk/careers



Top 3
university in the UK
for producing
business founders

The top five industries that Goldsmiths alumni work in

- 1 Arts
- 2 Education
- 3 Media, communications & publishing
- 4 Healthcare & wellbeing
- 5 Digital & technology

Some of the top employers of Goldsmiths alumni

- 1 BBC
- 2 NHS
- 3 Sony
- 4 Tate
- 5 Google

This data has been aggregated based on updates provided by alumni (2022).

Build your own business

Many Goldsmiths graduates go on to work for themselves – as freelancers, social entrepreneurs or by having a great commercial idea. Goldsmiths encourages this enterprising spirit, fostering an environment of discovery, where students can cross disciplines, so that they can leave confident when trying new avenues and opportunities. It's one of the reasons we're in the UK's top three universities for producing business founders, and 12th for developing CEOs and MDs (Hitachi Capital Invoice Finance 2021).

The Careers team offers practical webinars, enterprise competitions and grants, one-to-one advice and entry to enterprise networks, so you can test out your business ideas and meet like-minded people.

Goldsmiths also runs SYNAPSE, a series of workshops and business development support for students to explore entrepreneurial tools.

gold.ac.uk/icce/synapse



Find out more about careers support
gold.ac.uk/careers

Remarkable alumni

We asked some of our alumni about their time at Goldsmiths and the impact it had on their future.

“I really enjoyed Goldsmiths – the atmosphere and the lecturers... I feel like it’s an amazing place to study.”

Sachelle completed her undergraduate degree and a PGCE at Goldsmiths. Knowing the difference one teacher can make to a child’s future, Sachelle was ready to commit to her future career. One of the most valuable aspects of her teacher training at Goldsmiths was the fact that the people educating her were grounded in their own experience of being in the classroom and carrying out research in schools.

Sachelle



“It’s useful to know what you’re doing has got a purpose.”

For Jacqueline, it was important that the research she undertakes for her PhD in Psychology has a real-world impact. She is investigating strategies that can improve the physical health outcomes of Black and Minority Ethnic people by encouraging an increase in physical activity. While studying, she also works full-time in public health for a local authority, so she gets to see how research can be put to work on the ground.

Jacqueline



“I cannot recommend Goldsmiths enough. It will enrich you from a professional, cultural and civic perspective. The university enables you to critically understand and interact with this ever-changing, media-dominated world.”

Ten years on from completing an MA in Political Communications at Goldsmiths, Javier is now the Director of Policy and Communications for the European Parliament. He is certain that Goldsmiths helped him prepare for the job, with Goldsmiths encouraging him to look at uncertainties as challenges rather than barriers.

Javier



Our alumni go on to pursue all kinds of career paths and each journey is unique. At Goldsmiths, we support independent thinking – so whether you want to work for yourself or climb the career ladder, we can help you achieve your goals. You can find your niche, your passion, and your unique future path.

“I enjoyed every single day that I spent in London. This city is one of the most important in the world.”

Since graduating from the MA in International Relations, Renan’s career has gone from strength to strength. He works for CNN in Brazil as an international analyst, as well as being an advisor for a government entity in Abu Dhabi in the UAE. During his time at Goldsmiths, he took up as many opportunities as possible and immersed himself in London life. Renan has since been recognised as an inspiring figure, including being nominated for the 2020 Most Influential People of African Descent.

Renan



“Now I’ve got a prestigious degree under my belt, and I’ve also got these connections.”

After pursuing a career in retail management, Caroline returned to education and forged a new path. While undertaking an MA in Events and Experience Management, she and friends from her course secured funding from Goldsmiths to set up a company that ran events on campus and in Peckham. The experience gave her invaluable experience that she put to use in her future career.

Caroline



“We’re being taught by people who work there day-in, day-out.”

In Dean’s postgraduate education, he was looking for hands-on experience and found that Goldsmiths was the right fit for him. On the MA Anthropology and Museum Practice programme, Dean had the opportunity to work with the nearby Horniman Museum, handling precious artefacts. He credits the course for giving him a diverse skill set that he now draws on in his role as a Senior Policy Advisor for the Department for Culture, Media and Sport.

Dean



Supporting you in all your differences

We're here to give you the help and guidance you need – from the time you arrive until after graduation



We've invested in support services so that you can access help if you need it while you are a student. As well as academic guidance from your faculty, there are these professional services available.

Student Support Services

Access help with all aspects of being a student at Goldsmiths – whether you want to know about money, housing, wellbeing or disability support, Student Support Services can guide you in the right direction.

gold.ac.uk/students

Wellbeing Team

A team of friendly practitioners offering appointments face-to-face or online to assist you with any challenges you may be facing while studying at Goldsmiths, including advice and support if you're experiencing personal or emotional issues, or a decline in your mental health.

gold.ac.uk/students/wellbeing

Counselling Team

Student Support Services offers a free and confidential counselling service led by a team of qualified therapists.

gold.ac.uk/students/wellbeing/counselling

Disability Team

If you have a disability, long-term medical or mental health condition, or specific learning difficulty such as dyslexia, the Disability Service can help arrange any reasonable adjustments, equipment or support you need to study effectively.

gold.ac.uk/students/disability-support

Multi-Faith Chaplaincy

There's a Chaplaincy Centre on campus where anyone is welcome to drop in during opening hours to meet with a chaplain, have a cup of tea, or just be in a quiet space. The Chaplaincy is a multi-faith team available for everyone, regardless of religious beliefs or practices. We also have a prayer room on campus, as well as several relaxation and mindfulness spaces.

gold.ac.uk/chaplaincy

Academic skills support

We run workshops and one-to-one sessions designed to develop your academic and information literacy in all areas of study, including essay writing, presentation skills, researching and time management.

gold.ac.uk/asc

Out-of-hours support

Based in Loring Management Centre, our Campus Support Officers are available from 6pm to 6am weeknights and 24 hours at the weekends. Whether you're stressing over an essay, have concerns about a friend, or you're just having 'one of those days', you can drop by for a cup of tea and a chat.

gold.ac.uk/students/wellbeing/cso

Developing your English language skills

We offer in-session academic language development courses to help you improve your English language skills related to your area of study, and improve your understanding of the conventions of academic writing and presentation style.

gold.ac.uk/call/academic-language

Immigration Advisory Service (IAS)

The IAS provides help and advice to all new and existing international students, from help with applying for your visa to advice about working during or after your studies. The expert advisers can also help if you have any problems with your visa during your studies.

gold.ac.uk/immigration

Alumni benefits

As a Goldsmiths graduate you'll join a creative and collaborative community of 85,000 former students, spanning more than 160 countries. This rich network can provide opportunities for mentoring and collaboration, joining alumni groups and reunion events, as well as other ways to stay in touch.

As a former student you will be eligible for a range of benefits and services, including those designed specifically to help you navigate life after university. You will continue to receive free professional careers advice and resources and ongoing access to the Library for free for three years after you've left Goldsmiths.

gold.ac.uk/alumni

→ Find out more about Goldsmiths' support services
gold.ac.uk/support

Types of financial support for postgrads

As a postgraduate student there are several types of funding that may be available to you. Give yourself time to investigate what you are eligible to receive



From Goldsmiths

We offer a range of Goldsmiths-wide scholarships, bursaries and fee waivers that can provide financial assistance for study at postgraduate level. Some academic schools also offer their own subject-specific funding for prospective students. Use our Scholarship Finder to see what you may be able to access.

gold.ac.uk/fees-funding/scholarships

From external sources

Charities, trusts and professional bodies sometimes offer funding that you can apply for before and during your studies. Search online or use websites like postgraduatesearch.com/funding and thescholarshipub.org.uk

From the UK government

A Postgraduate Master's Loan can help with course fees and living costs while you study a Masters degree. The loans were up to £12,858 for 2025 entry. Postgraduate Doctoral Loans are for those starting a PhD and are to help with course fees and living costs. For 2025 entry the amount available was £30,301.

gov.uk/funding-for-postgraduate-study

From research councils

We've been successful in securing multi-million-pound funding for PhDs in the arts and humanities, computing, creative industries and the social sciences, through our involvement in several doctoral training centres and consortiums.

gold.ac.uk/studentships

International students

We offer a range of scholarships, bursaries and fee waivers that can provide financial assistance for study at postgraduate level. Use our Scholarships Finder to see what you may be eligible for at gold.ac.uk/fees-funding/scholarships

You can also visit gov.uk/postgraduate-scholarships-international-students for information about scholarships from the UK government that might be available to you.

Country-specific funding

Your home country may offer scholarships or special funding. Popular opportunities include Chevening, Commonwealth Scholarship Commission (CSC), and Fulbright Commission scholarships. Contact your Ministry of Education or local British Council office, British High Commission or embassy for information about sources of funding. Or find more information on our website. gold.ac.uk/international/regions

Federal loans for North Americans

For eligible students from the US, we are approved by the US Department of Education to offer federal loans. If you wish to be considered, you should complete the Free Application for Federal Student Aid (FAFSA) and list Goldsmiths as a college to receive the results of your FAFSA. Our Federal School Code is G11765. You can find out more on our website.

gold.ac.uk/students/fee-support/usa-student-funding/federaldirectloans

Canadian students are also able to use their government loans. Goldsmiths is registered to certify national and provincial loans and grants. gold.ac.uk/international/regions/canada

Bold moves

Whether you want to live in our halls of residence or elsewhere, we have teams in place to support you



Studying in an extraordinary city like London is an unbeatable experience. And it's even better when you know you're living somewhere convenient, safe and affordable.

Accommodation at Goldsmiths

We have a range of accommodation options – from halls of residence on or near campus, to more independent living that lets you mix with a wider London student population. Our Campus Support Officers and Residence Life team help ensure that, whether you're living in halls or at home, everyone is supported and can get involved in our lively and friendly community.

Halls of residence

There are around 1,400 rooms available in our halls of residence – either around New Cross, or a short bus or train ride away, enabling you to live in different areas of London.

Our accommodation is self-catered, and usually made up of single en suite bedrooms within shared flats. Some studio flats and accommodation for couples (if both people are full-time students) are also available. Halls of residence are either managed by Goldsmiths or in partnership with a private provider.

Your rent includes all electricity, water and heating bills, basic possessions insurance and internet access. For 2025-26, the weekly rent ranged from £203-£408.50.

All residents have access to out-of-hours support via our Campus Support team, helping provide a friendly and welcoming living environment.

We guarantee an offer of a place in halls to all international students in their first year, as long as applications are made by the advertised deadlines.

On page 6 you can view the locations of our halls of residence. Explore them all at [explore.gold/halls](https://www.gold.ac.uk/explore/gold/halls)

Privately rented homes and private halls

Want to maintain your independence? Renting privately can be a good option because you can decide where to live and who you share with. New Cross is a transport hub, so if you rent here you'll not only be close to campus but also well connected to other parts of the capital. The areas around Goldsmiths are on the more affordable scale of London housing, with many rental opportunities available. Many Goldsmiths students rent together in areas nearby – with popular spots being Brockley, Deptford, Peckham and Camberwell.

There are also privately managed halls near campus. As a Goldsmiths student, you'll have access to the experts at the University of London Housing Services (ULHS) who can support your private accommodation search.

Residence life

Resident Experience Coordinators (RECs) are specific to halls of residence and run student-led social activities that help create a sense of community among residents.

Supporting your independence

Your safety and wellbeing are very important to us, and we have a sector-leading team that offers pastoral support to students at Goldsmiths.

To ensure round-the-clock support for students and residents in our accommodation, our Campus Support Officers (CSOs) provide friendly, out-of-hours support. They will be your first point of contact for absolutely anything, seven days a week.

If you're stressing over an essay, concerned about a friend, or just having "one of those days", you're welcome to call the CSOs, request a call back, or drop by and see them. They are always up for a chat and a cuppa regardless. They also organise events and facilitate flat meetings to help create a sense of community among residents.

Your CSOs are based in the Loring Hall Management Centre and can be contacted daily, and generally in the evenings.

→ Find out more at [gold.ac.uk/accommodation](https://www.gold.ac.uk/accommodation)

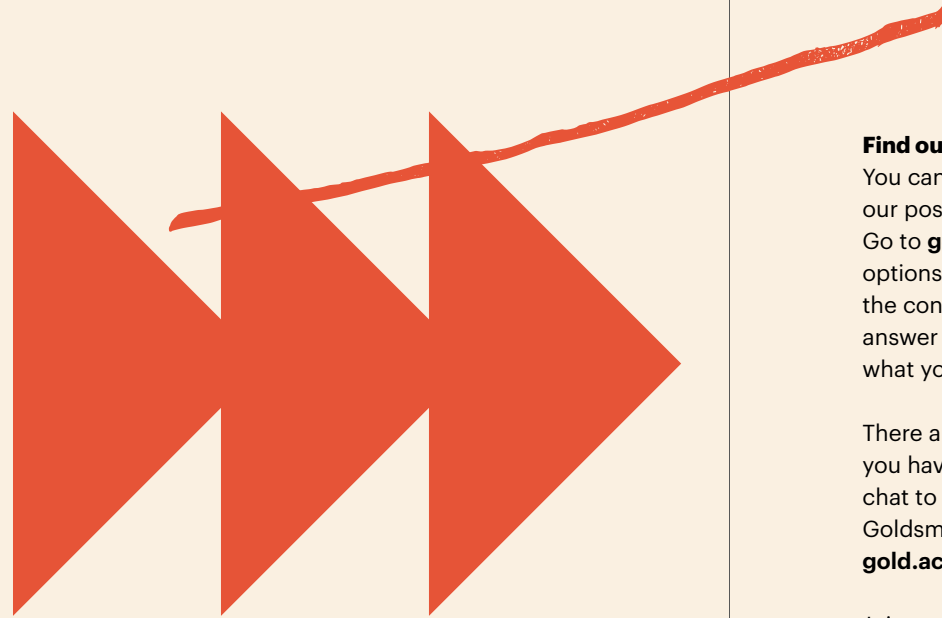


It can be scary moving to a new city where you don't know many people. The REC events provide the perfect opportunity to make new friends, which in turn helps students to feel more comfortable and relaxed.

The RECs try to host a variety of events each month to offer something for everyone. These include film nights, craft events, trips to museums, nature walks, free breakfasts and so much more. The events are the perfect way to destress from the pressures of studying and are a great way to get to know the local area and see the different things London has to offer!

Evie, Residence Experience Coordinator

What next?



Term dates

Autumn term:

21 September - 11 December 2026

Spring term:

4 January 2026 - 19 March 2027

Summer term:

19 April 2027 - 21 September 2027

Please note that these dates are provisional. Check the latest information at gold.ac.uk/term-dates

Postgraduate Open Events

See the dates for upcoming events at gold.ac.uk/open-days

Find out more about studying at Goldsmiths

Check gold.ac.uk/course-finder for further information about our degrees.

You can also get in touch with our Course Enquiries team
+44 (0)20 7078 5300
course-info@gold.ac.uk

Find out more

You can read in-depth information about all of our postgraduate programmes on our website. Go to gold.ac.uk/course-finder to search your options. On each programme page, you'll find the contact details of a member of staff who can answer any specific questions you have about what you'll study.

There are lots of other ways to get in touch if you have more general enquiries, or you want to chat to one of our students or staff about life at Goldsmiths. Explore your options at gold.ac.uk/study/contact

Join us for an Open Day or Open Evening to find out more about studying at Goldsmiths. It's a great way to get a feel for the university and meet some of the academic and support staff that make Goldsmiths such a special place. Upcoming events are listed at gold.ac.uk/open-days

Apply

For the majority of our postgraduate programmes, you apply directly to Goldsmiths using our online application system. The exceptions are MA Social Work (you apply through UCAS) and PGCEs (where you apply through the Department for Education).

Visit gold.ac.uk/pg/apply for comprehensive instructions and advice on how to apply.

Some programmes have particular application requirements or procedures, so please check the relevant programme page too. Search the programme list at gold.ac.uk/course-finder

After you've submitted your application, it will be reviewed by our staff. You may also be invited to an interview (either in person or virtually).

Fees

We publish the tuition fees for 2026 entry in autumn 2025. You can check our website for our current fees and the most up-to-date information. gold.ac.uk/pg/fees-funding

As a guide, we've listed the 2025 entry fees below. These show the typical ranges of tuition fees for full-time students. They are quoted per year and are subject to annual review; please note that they were correct at the time printing but may be subject to change.

Home students

PGCEs	£9,545
MAAs, MScs, MMus, MFAs and LLMs	£9,150 – £17,350
PG Diplomas	£7,500 – £11,250
PG Certificates (part-time)	£3,750
MRes programmes	£9,150 – £10,450
MPhil/PhD programmes	£5,006

International students

PGCEs	£21,200
MAAs, MScs, MMus, MFAs and LLMs	£19,000 – £30,750
PG Diplomas	£14,650 – £19,950
MRes programmes	£19,000 – £24,350
MPhil/PhD programmes	£5,006
Pre-Masters Pathways	£17,650 – £29,900
Pre-sessionals	£3,960 - £6,480

Entry requirements

Our minimum entry requirements are outlined below. For entry to some degrees you will need higher grades, or you might be asked to meet further requirements, such as providing a portfolio, or completing work experience or fitness to train criteria. You might also be considered for some programmes if you aren't a graduate but have relevant experience and can show that you have the ability to work at postgraduate level. You should check online programme pages for the most up-to-date entry requirements.

Minimum entry requirements**Teacher training programmes:**

Usually a 2:2 or equivalent undergraduate honours degree. There are other criteria such as GCSEs and fitness to train requirements, which are listed at gold.ac.uk/pgce/apply/entry-requirements

Masters degrees and Postgraduate Certificates and Diplomas:

You should normally have (or expect to be awarded) an undergraduate degree of at least 2:1 in a relevant subject.

MRes programmes:

You should normally have (or expect to be awarded) an undergraduate degree of at least 2:1 in a relevant subject.

MPhil/PhD programmes:

You should normally have (or expect to be awarded) a taught Masters in a relevant subject.

Pre-Masters pathways:

You should normally have (or expect to be awarded) an undergraduate degree of at least 2:2 in a relevant subject, plus IELTS 5.5 overall with no component under 5.5.

Pre-sessionals:

Depending on your level of English (IELTS) you will be advised to join either the 6-week, 9-week or 12-week programme. Full details are on our website at gold.ac.uk/preparation/pre-sessional-english-language

International qualifications

We accept a wide range of international qualifications. Find out more about these at gold.ac.uk/international/regions

English language requirements

If English isn't your first language, you'll need to meet our English language requirements to study with us. We accept a wide range of proficiency qualifications but prefer IELTS. As a guide, you need a minimum score of 6.5 in IELTS (with a minimum of 6.5 in the written test) to study our degree programmes. However, some of our programmes require a higher IELTS score.

You'll need to show us electronic copies of your English language test score certificate before you arrive, and your original at enrolment. The certificate must be issued within two years of your course start date.

If you don't yet meet the English language requirements to study a postgraduate degree, or if you'd like to take a course that prepares you for higher level study in the UK, we offer a range of specialist programmes for international students – see page 18.



Printed by Impress Print

Original design by the Communications, Marketing and Recruitment team at Goldsmiths.

Portrait photography © Julia Schönstadt
schonstadt.com and the Communications,
Marketing and Recruitment team at Goldsmiths.

Thank you to the other photographers, artists
and designers whose work is shown.

Images in this publication of current students and
alumni have been taken with their permission.
If you have any concerns about an image in this
publication, their use, and your rights, please
email cmr@gold.ac.uk

Images

Page 9 Linton Kwesi Johnson © Peter Verwimp.
Page 22 Parakeet photo by Nik on Unsplash.
Page 25 Canary Wharf © mattbuck, page 25
The Gherkin © CEphoto, Uwe Aranas. All licensed
for reuse under creativecommons.org/licenses/by/2.0 via
Wikimedia Commons.
The campus boundary on pages 6-7
is approximate.

Please note that some of the facilities listed may
be subject to booking, availability or only available
to students that are taking certain modules.

Equality and diversity

Goldsmiths is passionate about advancing equality
and celebrating diversity. You can find out more at
gold.ac.uk/equality-diversity

Disclaimer

We have made every effort to ensure the content
of this publication is up to date as of July 2025. If
you receive an offer to study with us, you will be
sent a set of terms and conditions governing our
relationship with you. This includes things like
what happens if the information we've already
provided to you changes. Goldsmiths does not
accept liability for the accuracy or reliability of
any information contained within third-party
publications/websites referred to or signposted
to in this Guide.

You can read our most up-to-date disclaimer at
gold.ac.uk/disclaimer

We hope that you will apply to study at Goldsmiths,
and in the event that you are offered a place of
study, acceptance of your offer will form a student
contract. Before you accept any offer, you should
read the offer together with the documents that
make up your contract (usually provided with the
offer letter), which can be found at [gold.ac.uk/
governance/students/student-contract](https://gold.ac.uk/governance/students/student-contract)

© Goldsmiths, University of London 2025

The copyright in these pages belongs to
Goldsmiths, University of London, and all rights
are reserved.

