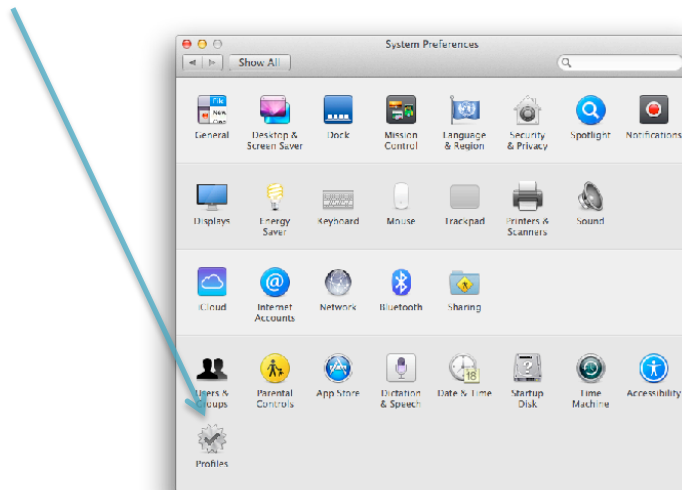


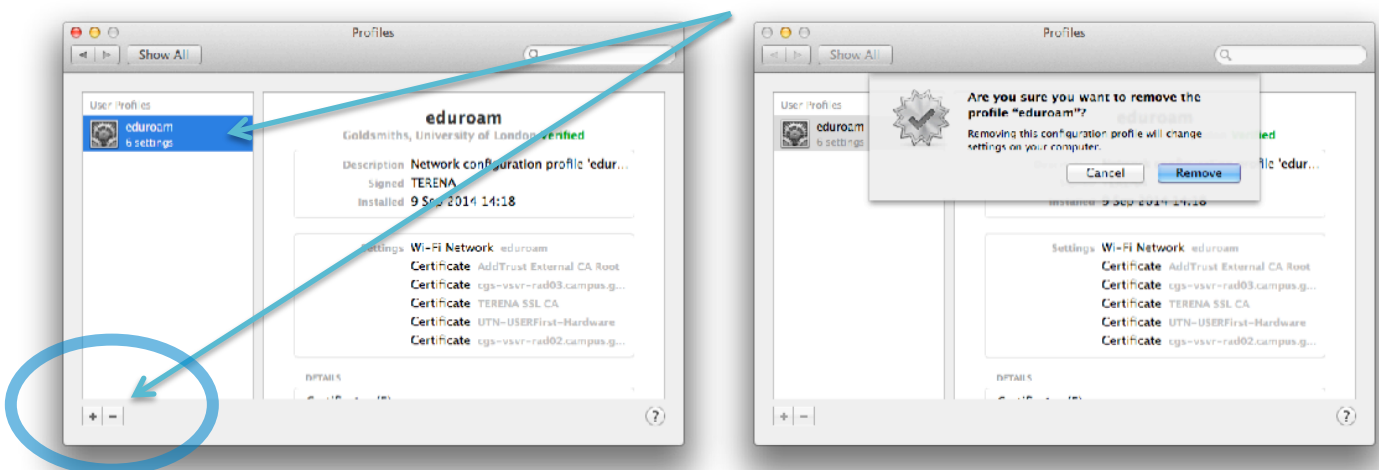
Creating a Manual Connection to eduroam Wi-Fi Mac OS X 10.7 – 10.9

Please ensure you follow this guide step by step and make sure you have your Campus login e.g. auser001@campus.goldsmiths.ac.uk and your current password to hand

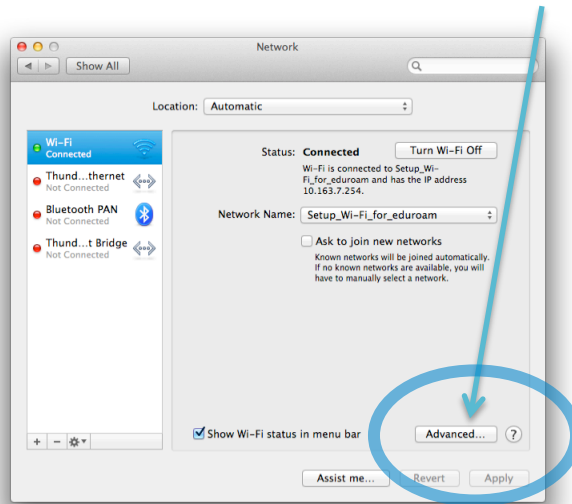
1. Open **System Preferences** by clicking on the black Apple logo at the top-left of the Desktop and selecting **System Preferences**
2. If the **Profile** preference is showing, then select it. If not, then continue to step 4.



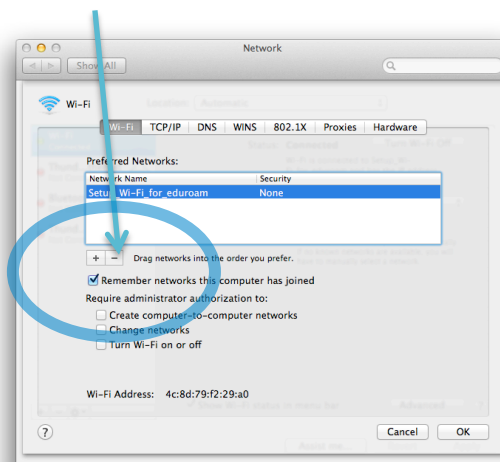
3. If you see a profile called **eduroam** then select it and press the – button to remove it. You may be prompted to enter the username and password for the computer to remove profiles.



- Return to **System Preferences** by selecting **Show All** at the top of the window. Click on **Network** to open the network configuration page. Select **Advanced**.



- Look through the list of WiFi networks. If you see **eduroam** or **Setup_WiFi_for_eduroam** then select them and press the – button to remove them.



- Press **Ok**. Look for the **Network Name** drop-down menu and select **eduroam**. This will begin the process of joining the network. You will be asked for a username and password.



7. Enter your **Campus** username and password. Remember to add **@campus.goldsmiths.ac.uk** at the end of the username.
8. You may be prompted to verify a server. Press **Continue**. You may have to enter the username and password for the computer.



9. After a few seconds (may be up to 10 seconds at busy times) you should see the status indicator show "Connected" and a green light appear. Congratulations, you are now connected to eduroam.

